

Instruction Manual



QDP Accessories: Q Series 3 Exhaust Pressure Module

<i>Description</i>	<i>Item Number</i>
<i>Q Series 3 Exhaust Pressure Module</i>	<i>A528-50-000</i>

 **BOC EDWARDS**

CONTENTS

Section	Title	Page
1	INTRODUCTION	1
1.1	Scope and definitions	1
1.2	ATEX directive implications	1
1.3	Description	2
2	TECHNICAL DATA	4
3	INSTALLATION	6
3.1	Unpack and inspect	6
3.2	System design	6
3.2.1	Inlet-purge	6
3.2.2	Exhaust pressure-switches	7
3.3	Configure the Q Series 3 Exhaust Pressure Module (if necessary)	7
3.4	Install the Exhaust Pressure Module on the pump	10
3.5	Make the electrical connections	12
3.6	Connect the nitrogen supply	13
3.7	Leak-test the system	13
4	OPERATION	14
5	MAINTENANCE	14
6	STORAGE AND DISPOSAL	14
6.1	Storage	14
6.2	Disposal	14
	RETURN OF BOC EDWARDS EQUIPMENT	

Illustrations

Figure	Title	Page
1	Schematic diagram of the Q Series 3 Exhaust Pressure Module	3
2	Q Series 3 Exhaust Pressure Module dimensions (mm)	5
3	Schematic wiring diagram of the Q Series 3 Exhaust Pressure Module	8
4	Configuration label	9
5	Q Series 3 Exhaust Pressure Module : front panel	11
6	Q Series 3 Exhaust Pressure Module : rear view	11

Tables

Table	Title	Page
1	Checklist of components	6
2	Electrical connector pin usage (as supplied)	12

Associated publications

Publication title	Publication Number
Q Controller	A380-00-880
QDP Gas Module	A528-05-880
QDP Drystar Pumps	A528-40-880

1 INTRODUCTION

1.1 Scope and definitions

This manual provides installation, operation and maintenance instructions for the BOC Edwards Q Series 3 Exhaust Pressure Module accessory for the QDP Drystar Pumps.

Read this manual before you install and operate your Q Series 3 Exhaust Pressure Module. Important safety information is highlighted as WARNING and CAUTION instructions; you must obey these instructions. The use of WARNINGS and CAUTIONS is defined below.

WARNING

Warnings are given where failure to observe the instruction could result in injury or death to people.

CAUTION

Cautions are given where failure to observe the instruction could result in damage to the equipment, associated equipment and process.

1.2 ATEX directive implications



This equipment is fitted with the ATEX compliance label shown above. This only applies when the Exhaust Pressure Module is fitted to the QDP pump. **The ATEX directive does not apply to the Exhaust Pressure Module on its own.**

For full details regarding the ATEX directive, see the QDP Drystar Vacuum Pumps instruction manual: A528-40-880 (Issue P or later).

For further information, please contact BOC Edwards: refer to the Addresses page at the end of this manual for details of your nearest BOC Edwards company.

1.3 Description

The Q Series 3 Exhaust Pressure Module is intended for use with a BOC Edwards QDP Drystar Pump fitted with a QDP Gas Module. The Q Series 3 Exhaust Pressure Module provides the following nitrogen supplies to the QDP pump :

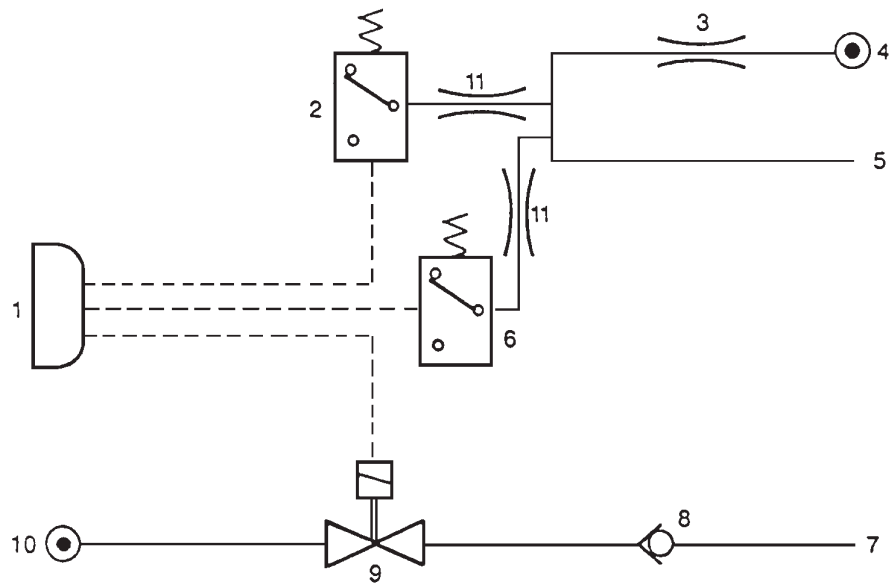
- Exhaust-purge
- Inlet-purge.

Nitrogen gas is routed to the pump through $\frac{1}{4}$ inch pipelines. A schematic diagram of the Q Series 3 Exhaust Pressure Module is given in Figure 1.

The nitrogen supply for the inlet-purge is connected to the front of the Exhaust Pressure Module. The nitrogen supply passes through a solenoid-valve inside the Module and is then connected to the QDP pump. The inlet-purge can be switched on and off by this valve which is controlled by your control equipment.

The nitrogen supply for the exhaust-purge comes from the auxiliary nitrogen outlet on the QDP Gas Module. This auxiliary nitrogen outlet is connected to the exhaust-purge nitrogen inlet on the Exhaust Pressure Module. The pressure in this pipeline is monitored by two pressure-switches (with gold contacts) in the Exhaust Pressure Module. One pressure-switch gives a pressure warning signal and the other pressure-switch gives an over-pressure signal. These signals are used to control the electrical supply and the nitrogen supply to the QDP pump.

The 17-way connector at the end of the electrical cable (which is on the back of the Exhaust Pressure Module) is connected to the auxiliary connector on the QDP Gas Module. The electrical supply for the inlet-purge solenoid-valve comes through this cable. This cable also carries the signals from the pressure-switches, which pass back through the Gas Module and are available on the 19-way connector on the Gas Module.



AG/5499/A

----- Electrical cables
 _____ Gas lines

1. 17-way electrical connector
2. Exhaust pressure-switch (warning)
3. Restrictor
4. Exhaust-purge nitrogen inlet (from QDP Gas Module)
5. Exhaust-purge nitrogen outlet (to QDP pump)
6. Exhaust pressure-switch (over-pressure)
7. Inlet-purge nitrogen outlet (to QDP pump)
8. Check-valve
9. Solenoid-valve
10. Inlet-purge nitrogen inlet
11. Snubbing restrictor

Figure 1 - Schematic diagram of the Q Series 3 Exhaust Pressure Module

2 TECHNICAL DATA

Dimensions	See Figure 2
Mass	1.5 kg
Maximum ambient operating temperature	40 °C
Nitrogen supply connection	¹ / ₄ inch Swagelok fittings
17-way electrical connector	CA3106E20-29P/F80
Solenoid-valve	
Operating voltage	24 V a.c., 50 or 60 Hz
Rating	50 Hz 60 Hz
Holding	18 VA 15 VA
Inrush	29 VA 24 VA
Exhaust pressure-switches	
Electrical supply	24 V a.c. or 24 V d.c.
Switch rating (24 V a.c. supply)	
Maximum current	1 A inductive 1 A resistive
Minimum current	20 mA
Switch rating (24 V d.c. supply)	
Maximum current	0.5 A inductive 1 A resistive
Minimum current	20 mA
Operating pressure	
Warning	5.0 psi ± 0.6 psi
Over-pressure	8.0 psi ± 0.6 psi
Hysteresis (maximum)	1.3 psi
Maximum inlet-purge pressure	10 psig

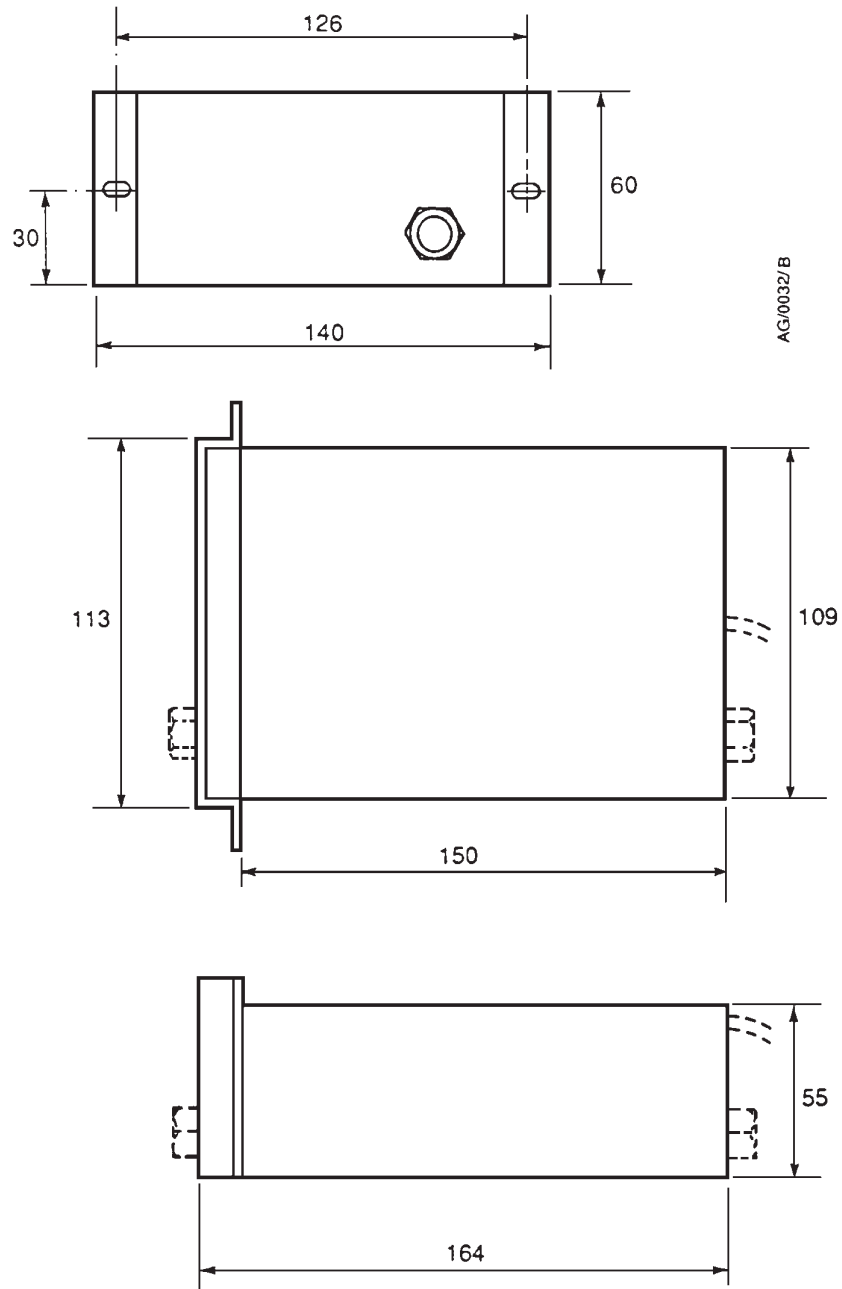


Figure 2 - Q Series 3 Exhaust Pressure Module dimensions (mm)

3 INSTALLATION

3.1 Unpack and inspect

Remove all packing materials and protective covers and check the Q Series 3 Exhaust Pressure Module.

If the Q Series 3 Exhaust Pressure Module is damaged, notify your supplier and the carrier in writing within three days; state the Item Number of the Exhaust Pressure Module together with your order number and your suppliers invoice number. Retain all packing materials for inspection. Do not use the Q Series 3 Exhaust Pressure Module if it is damaged.

Check that your package contains the items listed in Table 1. If any of these items is missing, notify your supplier in writing within three days.

Qty	Description	Check (✓)
1	Q Series 3 Exhaust Pressure Module	<input type="checkbox"/>
1	Fitting-kit	<input type="checkbox"/>
1	Connecting pipe	<input type="checkbox"/>

Table 1 - Checklist of items

If the Q Series 3 Exhaust Pressure Module is not to be used immediately, replace the protective covers. Store the Q Series 3 Exhaust Pressure Module in suitable conditions, as described in Section 6.1.

3.2 System design

<p>WARNING</p> <p>You must incorporate the design features detailed below in your system. If you do not, you can cause injury to people and damage to your equipment.</p>
--

3.2.1 Inlet-purge

To ensure that your vacuum system cannot be over-pressured by the nitrogen supply to the inlet-purge, you must design your vacuum and control systems so that :

- the parts of your vacuum system which are not suitable for positive pressures are isolated when the pump is not in use and the inlet-purge nitrogen supply is switched on

or :

- the electrical supply to the inlet-purge solenoid-valve (through the Gas Module) is connected so that the valve is closed when the QDP pump is switched off.

3.2.2 Exhaust pressure-switches

Both normally-open and normally-closed outputs are available from the pressure-switches. To ensure that the exhaust pressure is monitored correctly, you must connect the signal outputs from the exhaust pressure-switches so that :

- the warning signal gives an indication that the pressure of the exhaust-purge nitrogen supply is too high
- the over-pressure signal switches off the pump. (Note that, if you have installed your Gas Module correctly, this will also switch off the nitrogen supply to the Gas Module.)

3.3 Configure the Q Series 3 Exhaust Pressure Module (if necessary)

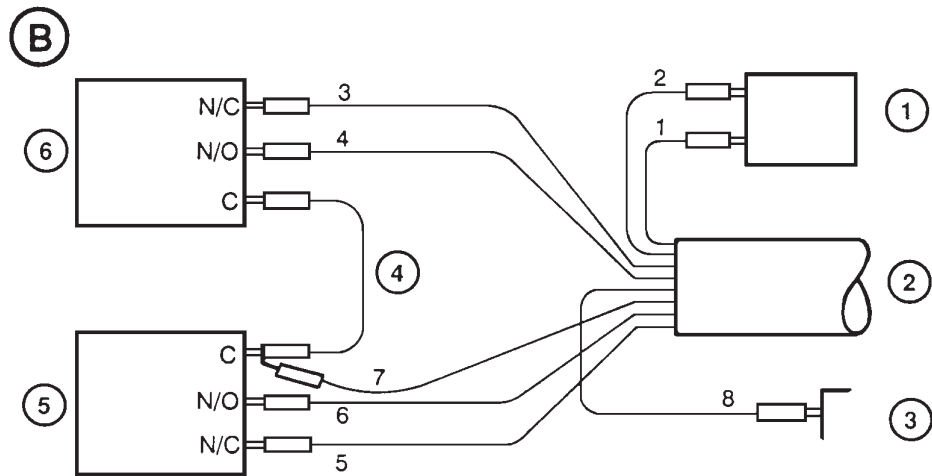
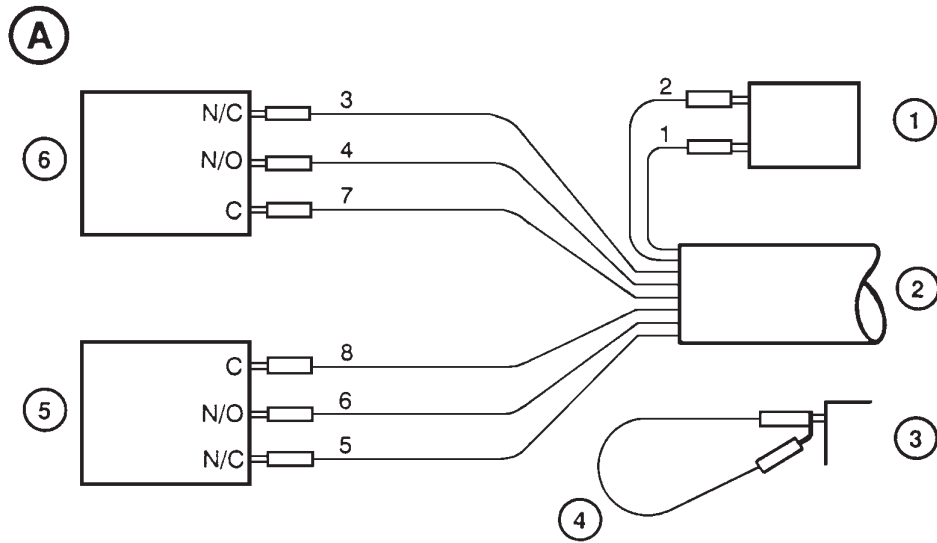
CAUTION

If you reconfigure the Exhaust Pressure Module, ensure that all the electrical connections are secure before you use the Exhaust Pressure Module.

The Q Series 3 Exhaust Pressure Module as supplied is configured for use with control systems which require individual common wires to each pressure-switch. This configuration is shown in Figure 3, detail A. Text on the back panel of the Q Series 3 Exhaust Pressure Module identifies this configuration (see Figure 4, detail A), which is suitable for use with Q Controllers with Item Numbers A381-xx-xxx.

If you want to use the Q Series 3 Exhaust Pressure Module with a Q Controller with an Item Number of A380-xx-xxx, you must reconfigure the Exhaust Pressure Module so that the pressure-switches have a shared common wire; use the following procedure:

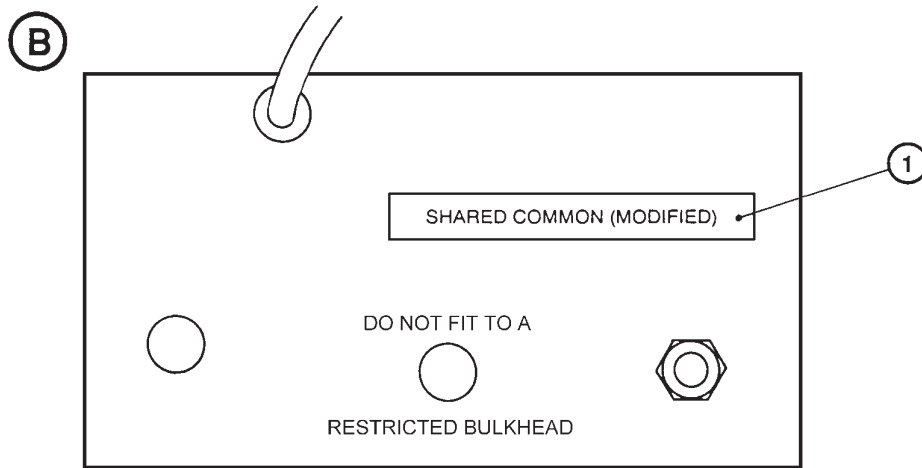
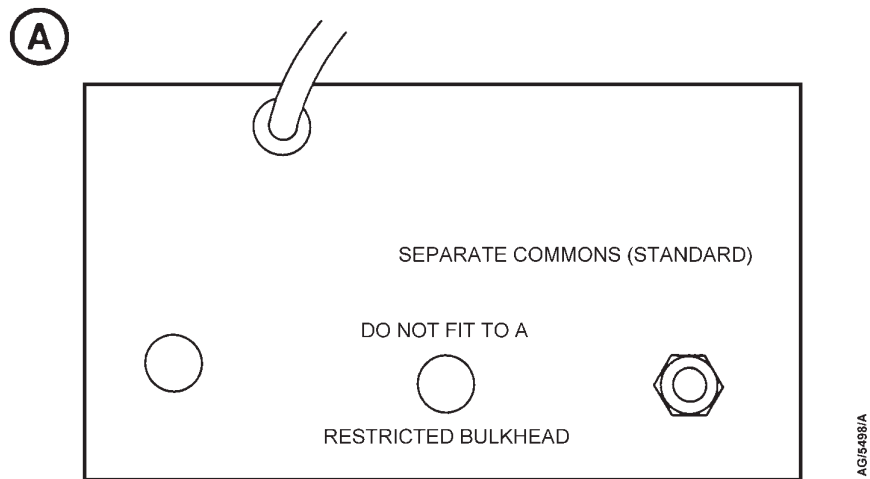
1. Remove the cover from the Q Series 3 Exhaust Pressure Module.
2. Refer to Figure 3. Unplug the link lead (4) from the parking terminal (3) and unplug the male connector from the male/female connector on the lead.
3. Unplug wire 8 from the common terminal on the warning pressure-switch (5). Plug wire 8 onto the parking terminal (3).
4. Unplug wire 7 from the common terminal on the over-pressure pressure-switch (6).
5. Plug the male connector on the link lead onto the common terminal on the over-pressure pressure-switch (6).
6. Plug the male/female connector on the link lead onto the common terminal on the warning pressure-switch (5).
7. Plug wire 7 (removed from the pressure-switch in Step 4 above) onto the male/female connector on the link lead.
8. Peel off one of the self-adhesive labels from the inside of the cover of the Q Series 3 Exhaust Pressure Module. Place the label over the configuration text on the rear panel of the Q Series 3 Exhaust Pressure Module: refer to Figure 4, detail B.
9. Refit the cover on the Q Series 3 Exhaust Pressure Module.



AGI0461/C

- | | | | |
|-----|---|----|--------------------------------------|
| A | Configuration as supplied | 1. | Solenoid-valve |
| B | Configuration for use with Q Controller | 2. | 8-core electrical cable |
| | | 3. | Parking terminal |
| N/C | Normally-closed | 4. | Link lead with male/female connector |
| N/O | Normally-open | 5. | Warning pressure-switch |
| C | Common | 6. | Over-pressure pressure-switch |

Figure 3 - Schematic wiring diagram of the Q Series 3 Exhaust Pressure Module



- A Q Series 3 Exhaust Pressure Module configured for use with control systems which require separate common wires (as supplied)
 - B Q Series 3 Exhaust Pressure Module configured for use with Q Controller
1. Self-adhesive label

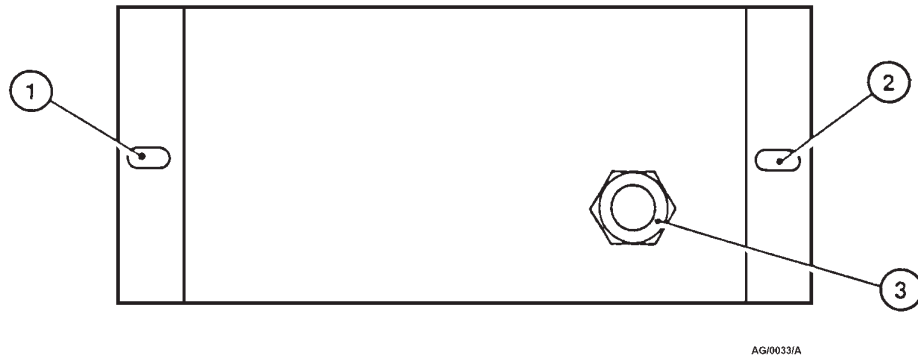
Figure 4 - Configuration label

3.4 Install the Exhaust Pressure Module on the pump

When the Q Series 3 Exhaust Pressure Module is installed in the frame of the QDP pump, the Exhaust Pressure Module inlet-purge and exhaust-purge nitrogen outlets are designed to align and engage with the nitrogen pipelines on the pump. Figures 5 and 6 show the location of components of the Exhaust Pressure Module. Where necessary, refer to the instruction manuals supplied with your QDP pump and your QDP Gas Module.

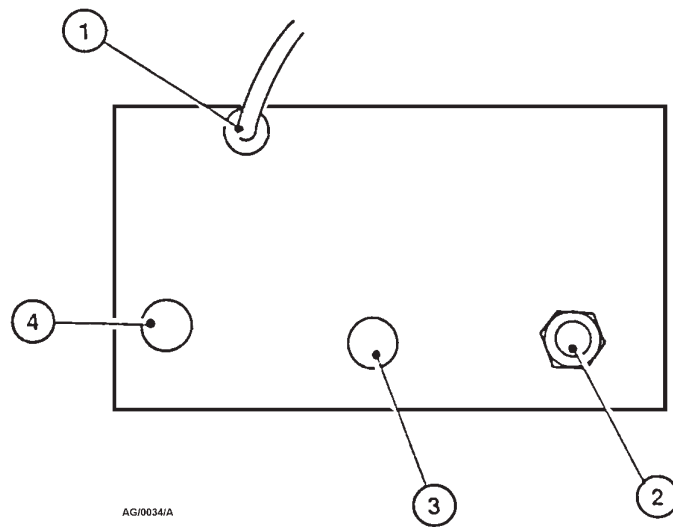
Use the procedure below to fit the Q Series 3 Exhaust Pressure Module.

1. Switch off the pump, if it is in use.
2. Remove the two blanking plugs from the inlet-purge and exhaust-purge nitrogen pipeline terminations on the QDP pump.
3. If there is a restricted bulkhead fitting (identified by an external O ring) in the exhaust purge pipeline, replace the fitting with the unrestricted bulkhead fitting supplied in the fitting-kit.
4. Align the Exhaust Pressure Module in the pump frame. Make sure that the exhaust-purge and inlet-purge nitrogen pipeline terminations on the back of the Exhaust Pressure Module (Figure 6, items 2 and 3) are in-line with the nitrogen pipelines on the pump.
5. Use the two screws supplied to secure the Exhaust Pressure Module in position.
6. Tighten the inlet-purge and exhaust-purge nitrogen pipeline connectors.
7. Fit the connecting pipe supplied to the exhaust-purge inlet on the Exhaust Pressure Module (Figure 6, item 4) and to the auxiliary nitrogen outlet on the QDP Gas Module. This pipe passes through a cut-out in the gas services panel.



1. Fixing screw
2. Fixing screw
3. Inlet-purge nitrogen inlet

Figure 5 - Q Series 3 Exhaust Pressure Module : front panel



1. Electrical cable
2. Exhaust-purge nitrogen inlet
3. Exhaust-purge nitrogen outlet
4. Inlet-purge nitrogen outlet

Figure 6 - Q Series 3 Exhaust Pressure Module : rear view

3.5 Make the electrical connections

CAUTION

Do not exceed the pressure-switch ratings stated in Section 2. If you do, you can damage the Exhaust Pressure Module.

Note: Ensure that when you connect the signals from the pressure-switches to your control equipment, you do not exceed the switch ratings specified in Section 2. If your control equipment does not meet the specifications in Section 2, contact your supplier or BOC Edwards for advice.

The 17-way connector on the electrical cable (Figure 6, item 1) is connected to the auxiliary connector on the back of the Gas Module. A 19-way connector on the front of the Gas Module is connected to your control equipment.

The QSeries 3 Exhaust Pressure Module uses 8 of the connections in the 17-way connector. These are detailed in Table 2. Note that the same pin letters are used for these signals on the 19-way connector from the Gas Module.

Use the procedure below to make the electrical connections:

1. Pass the electrical cable through the cut-out at the top of the gas services panel on the QDP pump.
2. Ensure that the QDP pump is switched off and then plug the 17-way connector at the end of the electrical cable into the auxiliary connector on the back of the Gas Module.
3. Connect the signals from the exhaust-purge pressure-switches (which are available on the 19-way connector on the front of the Gas Module) to your control system so that the warning signal gives an indication that the pressure of the exhaust-purge nitrogen supply is too high and the over-pressure signal switches off the pump.

Pin letter	Wire number	Signal
A	1	} Inlet-purge solenoid-valve
B	2	
C	3	normally closed } Exhaust pressure-switch
D	4	normally open } over-pressure signal
E	5	normally closed } Exhaust pressure-switch
F	6	normally open } warning signal
G	7	return, exhaust pressure-switch, over-pressure signal
H	8	return, exhaust pressure-switch, warning signal

Table 2 - Electrical connector pin usage (as supplied)

3.6 **Connect the nitrogen supply**

Use $\frac{1}{4}$ inch Swagelok fittings to connect your inlet-purge nitrogen supply to the nitrogen inlet (Figure 5, item 3). Do not turn the nitrogen supply on yet.

3.7 **Leak-test the system**

WARNING

Leak-test the system after installation and seal any leaks found to prevent leakage of hazardous substances out of the system and leakage of air into the system.

After you have installed the Q Series 3 Exhaust Pressure Module, leak-test the installation and seal any leaks found. Hazardous substances which leak from the installation will be dangerous to people and there will be a danger of explosion if air leaks into the installation.

4 OPERATION

1. Turn on the nitrogen supply to the inlet-purge.
2. Use the procedure in the QDP Gas Module instruction manual to set up and operate the nitrogen supply to the exhaust-purge.

5 MAINTENANCE

The Q Series 3 Exhaust Pressure Module contains no parts which can be serviced by the user. To maintain the Q Series 3 Exhaust Pressure Module in normal use, do the following checks when you maintain the QDP pump :

- Check that the nitrogen pipelines are secure
- Check that the electrical connections are secure and that the electrical cable is not damaged.

6 STORAGE AND DISPOSAL

6.1 Storage

Store the Q Series 3 Exhaust Pressure Module as described below.

1. Remove the Q Series 3 Exhaust Pressure Module from the QDP pump (if fitted).
2. Place protective covers over the nitrogen connectors and electrical connectors.
3. Store in cool dry conditions until required for use. When required, prepare and install the Q Series 3 Exhaust Pressure Module as described in Section 3.

6.2 Disposal

Dispose of the Q Series 3 Exhaust Pressure Module and any components removed from it safely in accordance with all local and national safety requirements.

Return of BOC Edwards Equipment - Procedure

INTRODUCTION

Before returning your equipment, you must warn BOC Edwards if substances you used (and produced) in the equipment can be hazardous. This information is fundamental to the safety of our Service Centre employees and will determine the procedures employed to service your equipment.

Complete the Declaration (HS2) and send it to BOC Edwards before you dispatch the equipment. It is important to note that this declaration is for BOC Edwards internal use only, and has no relationship to local, national or international transportation safety or environmental requirements. As the person offering the equipment for shipment, it is your responsibility to ensure compliance with applicable laws.

GUIDELINES

- Equipment is '**uncontaminated**' if it has not been used, or if it has only been used with substances that are not hazardous. Your equipment is '**contaminated**' if it has been used with any substances classified as hazardous under EU Directive 67/548/EEC (as amended) or OSHA Occupational Safety (29 CFR 1910).
- If your equipment has been used with radioactive substances, biological or infectious agents, mercury, polychlorinated biphenyls (PCB's), dioxins or sodium azide, you must decontaminate it before you return it to BOC Edwards. You must send independent proof of decontamination (for example a certificate of analysis) to BOC Edwards with the Declaration (HS2). Phone BOC Edwards for advice.
- If your equipment is contaminated, you must either:
 - Remove all traces of contamination (to the satisfaction of laws governing the transportation of dangerous/hazardous substances).
 - Or, properly classify the hazard, mark, manifest and ship the equipment in accordance with applicable laws governing the shipment of hazardous materials.

Note: Some contaminated equipment may not be suitable for airfreight.

PROCEDURE

1. Contact BOC Edwards and obtain a Return Authorisation Number for your equipment.
2. Complete the Return of BOC Edwards Equipment - Declaration (HS2).
3. If the equipment is contaminated, you must contact your transporter to ensure that you properly classify the hazard, mark, manifest and ship the equipment, in accordance with applicable laws governing the shipment of contaminated/hazardous materials. As the person offering the equipment for shipment, it is your responsibility to ensure compliance with applicable law. **Note: Equipment contaminated with some hazardous materials, such as semiconductor by-products, may not be suitable for airfreight - contact your transporter for advice.**
4. Remove all traces of hazardous gases: pass an inert gas through the equipment and any accessories that will be returned to BOC Edwards. Where possible, drain all fluids and lubricants from the equipment and its accessories.
5. Seal up all of the equipment's inlets and outlets (including those where accessories were attached) with blanking flanges or, for uncontaminated product, with heavy gauge tape.
6. Seal equipment in a thick polythene/polyethylene bag or sheet.
7. If the equipment is large, strap the equipment and its accessories to a wooden pallet. If the equipment is too small to be strapped to a pallet, pack it in a suitable strong box.
8. Fax or post a copy of the Declaration (HS2) to BOC Edwards. The Declaration must arrive before the equipment.
9. Give a copy of the Declaration (HS2) to the transporter. You must tell your transporter if the equipment is contaminated.
10. Seal the original Declaration in a suitable envelope: attach the envelope securely to the outside of the equipment package, in a clear weatherproof bag.

WRITE YOUR RETURN AUTHORISATION NUMBER CLEARLY ON THE OUTSIDE OF THE ENVELOPE OR ON THE OUTSIDE OF THE EQUIPMENT PACKAGE.

Return of BOC Edwards Equipment - Declaration

Return Authorisation Number: _____

You must:

- Know about all of the substances which have been used and produced in the equipment before you complete this Declaration
- Read the Return of BOC Edwards Equipment - Procedure (HS1) before you complete this Declaration
- Contact BOC Edwards to obtain a Return Authorisation Number and to obtain advice if you have any questions
- Send this form to BOC Edwards before you return your equipment

SECTION 1: EQUIPMENT

Equipment/System Name _____

Part Number _____

Serial Number _____

Has the equipment been used, tested or operated ?

YES Go to Section 2 NO Go to Section 4

IF APPLICABLE:

Tool Reference Number _____

Process _____

Failure Date _____

Serial Number of Replacement Equipment _____

SECTION 2: SUBSTANCES IN CONTACT WITH THE EQUIPMENT

Are any substances used or produced in the equipment:

- Radioactive, biological or infectious agents, mercury, poly chlorinated biphenyls (PCBs), dioxins or sodium azide? (if YES, see Note 1) YES NO
- Hazardous to human health and safety? YES NO

Note 1 : BOC Edwards will not accept delivery of any equipment that is contaminated with radioactive substances, biological/infectious agents, mercury, PCB's, dioxins or sodium azide, unless you:

- Decontaminate the equipment
- Provide proof of decontamination

YOU MUST CONTACT BOC EDWARDS FOR ADVICE BEFORE YOU RETURN SUCH EQUIPMENT

SECTION 3: LIST OF SUBSTANCES IN CONTACT WITH THE EQUIPMENT

Substance name	Chemical Symbol	Precautions required (for example, use protective gloves, etc.)	Action required after a spill, leak or exposure

SECTION 4: RETURN INFORMATION

Reason for return and symptoms of malfunction _____

- If you have a warranty claim:
- who did you buy the equipment from ? _____
 - give the supplier's invoice number _____

SECTION 5: DECLARATION

Print your name: _____ Print your job title: _____

Print your organisation: _____

Print your address: _____

Telephone number: _____ Date of equipment delivery: _____

I have made reasonable enquiry and I have supplied accurate information in this Declaration. I have not withheld any information, and I have followed the Return of BOC Edwards Equipment - Procedure (HS1).

Note: Please print out this form, sign it and return the signed form as hard copy.

Signed: _____ Date _____

This page intentionally blank.

UNITED KINGDOM

CORPORATE HEADQUARTERS

BOC EDWARDS

Manor Royal
Crawley
West Sussex
RH10 9LW
Tel +(44) 1293 528844
Fax +(44) 1293 533453

BOC EDWARDS

Wingates Industrial Estate
Great Bank Road
Westhoughton, Bolton
Lancashire
BL5 3SL
Tel +(44) 1942 652652
Fax +(44) 1942 652651

AMERICA (USA)

USA HEADQUARTERS

BOC EDWARDS

One Edwards Park
301 Ballardvale Street
Wilmington, MA 01887
Tel +(1) 978 658 5410
Toll free (USA only) 1 800 848 9800
Fax +(1) 978 658 7969

3901 Burton Drive
Santa Clara, CA 95054
Tel +(1) 408 496 1177
Fax +(1) 408 496 1188

1810 West Drake Drive
Suite 101
Tempe, AZ 85283
Tel +(1) 602 777 7007
Fax +(1) 602 777 2244

11701 Stonehollow Drive
Suite 100
Austin, TX 78758
Tel +(1) 512 491 6622
Fax +(1) 512 491 0629

3501 Island Avenue
Philadelphia, PA 19153
Tel +(1) 215 365 8653
Fax +(1) 978 753 6846

BELGIUM

BOC EDWARDS

Bergensesteenweg 709
B1600 Sint-Pieters-Leeuw
Brussels
Tel +(32) 2 363 0030
Fax +(32) 2 363 0064

BRAZIL

BOC DO BRASIL LTDA

DIVISÃO EDWARDS ALTO VACO

Rua Bernado Wrona 222
02710 São Paulo-SP
Tel +(55) 11 3952 5000
Fax +(55) 11 3965 2766

CANADA

BOC EDWARDS

5975 Falbourne Street
Mississauga, Ontario L5R3W6
Canada
Tel +(1) 905 501 2558
Fax +(1) 905 501 1632

12055 Cote de Liesse
Dorval, Quebec H9P1B4
Canada
Tel +(1) 514 631 3501
Fax +(1) 514 631 3502

CHINA

BOC TRADING (SHANGHAI) CO. LTD.

23 Fu Te Road (N)
Wai Gao Qiao Free Trade Zone
Pudong
Shanghai, 200131
PRC China
Tel +(86 21) 5866 9618
Fax +(86 21) 5866 9993

FRANCE

BOC EDWARDS

125 Avenue Louis Roche
92238 Gennevilliers, Cedex
Paris
Tel +(33) 1 47 98 24 01
Fax +(33) 1 47 98 44 54

GERMANY

BOC EDWARDS

Ammerthalstraße 36
85551 Kirchheim
Munich
Tel +(49) 89 99 19 18 0
Fax +(49) 89 99 19 18 99

HONG KONG S.A.R.

BOC EDWARDS (ASIA)

12 Chun Yat Street
Tseung Kwan O Industrial Estate
Tseung Kwan O, Kowloon
Hong Kong S.A.R.
Tel +(852) 2372 2640
Fax +(852) 2796 9095

INDIA

BOC EDWARDS

DIVIN. OF BOC INDIA LIMITED

203 Surya Kiran Building
19 Kasturba Gandhi Marg
New De hi - 110 001
India
Tel +(91) 11 851 0065
Fax +(91) 11 851 0245

ISRAEL

EDWARDS ISRAEL VACUUM LTD.

5 Habarzel Blvd
Gat 2000 Industrial Zone
Qiryat Gat 82000
Tel +(972) 8 681 0633
Fax +(972) 8 681 0640

ITALY

BOC EDWARDS

Via Carpaccio 35
20090 Trezzano sul Naviglio
Milan
Tel +(39) 02 48 4471
Fax +(39) 02 48 401638

JAPAN

HEADQUARTERS

BOC EDWARDS

Shuwa Shiba Park Building A-3F
2-4-1 Shibakoen Minato-ku
Tokyo, 105-0011
Tel +(81) (0) 3 5470 6530
Fax +(81) (0) 3 5470 6521

KOREA

HEADQUARTERS

SONGWON EDWARDS LTD.

5th FL. Daewoo Engineering Bldg.
Soonae-dong
Bundang-gu, Sungnam City
Kyungki-do, Korea
Tel +(82) 31 716 7070
Fax +(82) 31 738 1001-3

FACTORY & GV

SONGWON EDWARDS LTD.

625-7 Upsong-dong
Chunan City
Chungchong Nam-do
Korea
Tel +(82) 41 621 7070
Fax +(82) 41 621 7700

SINGAPORE

BOC EDWARDS (ASIA)

42 Loyang Drive
Loyang Industrial Estate
Singapore 508962
Tel +(65) 6546 8408
Fax +(65) 6546 8407

TAIWAN, R.O.C.

EDWARDS TECHNOLOGIES LIMITED

No. 434 Chung hua Road
Toufen Town, Miaoli County
Taiwan ROC
Tel +(886) 37 611422
Fax +(886) 37 611401

PLEASE CONTACT ANY OF THESE COMPANIES FOR DETAILS OF OTHER SALES AND SERVICE CENTRES IN YOUR AREA.

BOC Edwards is part of BOC Limited. BOC Edwards and the stripe symbol are trade marks of The BOC Group.
© BOC Edwards 2003

<http://www.bocedwards.com>
info@bocedwards.com

Produced by Technical Publicity Techpublicity@edwards.boc.com

 **BOC EDWARDS**