

# STP-iXR1606 integrated turbomolecular pump

STP-iXR1606 series magnetically levitated turbo-molecular pump provides industry-leading performance and incorporates latest technology small power supply into the onboard control.

The pumping performance is improved with a revolutionary, newly developed rotor design. This fully integrated product offers easy installation and small footprint as an all-in-one solution for all application tools.



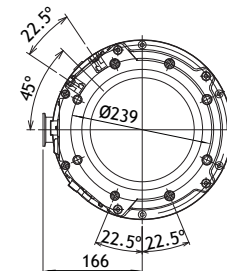
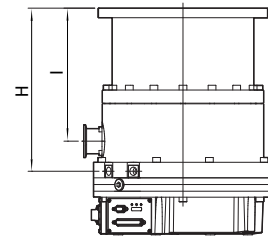
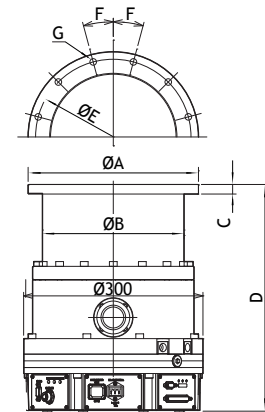
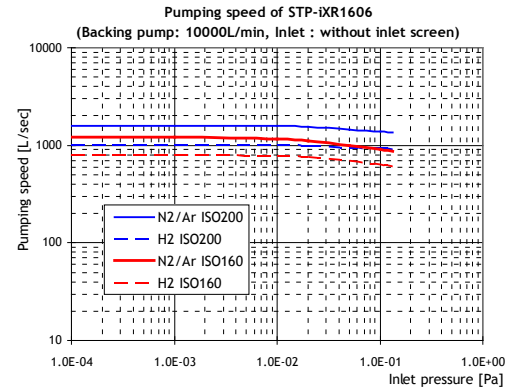
## Features and benefits

- All-in-One (Fully Integrated Onboard Controller)
  - Eliminates connection cable between pump and control unit
  - Eliminates installation space and cost required by conventional rack type control unit
  - Compact design results in easy installation and small foot print
- High Performance
  - Highest pumping speed in the 8" TMP class
  - Significantly improved throughput performance in high flow gas range
  - Maximum allowable flow is 88% over the existing model
- Energy saving
  - 32% reduced power consumption in the high gas flow area
- Communication
  - I/O Remote, RS232C, RS485, STP-Link are standard ports
  - Profibus optional variant
- Compliant Standards
  - UL marked, CE marked, SEMI-S2 compliant with RoHS directive
  - IP54 equivalent as standard
- Contact Edwards if other options are required, such as:
  - Corrosion resistance
  - Temperature Management System (TMS)
  - Other communications protocol

# Technical data

Inlet flange size	VG200/ VG250 ISO200F/ ISO250F ICF253/ ICF305	VG150 ISO160F ICF203	
Backing port size	KF40		
Pumping speed N <sub>2</sub>	1600	1000	Litres/second
Pumping speed H <sub>2</sub>	1200	800	Litres/second
Compression ratio N <sub>2</sub> /H <sub>2</sub>	>10 <sup>8</sup> / 1x10 <sup>3</sup>		
Ultimate pressure	10 <sup>-7</sup> (10 <sup>-9</sup> )		Pa (Torr)
Allowable backing pressure	266 (2)		Pa (Torr)
Max gas flow N <sub>2</sub> *1 (water cooled only)	4700 (7.94)		sccm (Pa m <sup>3</sup> /sec)
Max gas flow Ar *1 (water cooled only)	1800 (3.04)		sccm (Pa m <sup>3</sup> /sec)
Rated speed	36,500		rpm
Starting time	<8		minutes
Mounting position	Any orientation		
Input voltage	200-240		V
Max input power	750		VA
Weight	48		kg

## Pumping speed



\*1: The maximum gas flow value applies for N<sub>2</sub> or Ar gas pumped continuously, with water cooling temperature under 25 degree C and a backing pump of 10,000 l/min size or larger used. The value is changed if operated under different conditions

## Dimensions

Inlet port flange	VG150	VG200	VG250	ISO160F	ISO200F	ISO250F	ICF203	ICF253	ICF305
ØA	235	300	350	225	285	335	203	253	305
ØB	237	237	237	237	237	237	237	237	237
C	15	16	16	15	16	16	22	25	28
D	420	380	380	420	380	380	420	418	380
ØE	210	270	320	200	260	310	181	231.8	284
F	22.5	22.5	15	22.5	15	15	9	7.5	5.625
G	8-Ø12	8-Ø15	12-Ø15	8-Ø12	12-Ø11	12-Ø11	20-Ø8.4	24-Ø8.4	32-Ø8.4
H	313	273	273	313	273	273	313	311	273
J	263	223	223	263	223	223	263	261	223

## Global contacts

### EUROPE

UK Crawley +44 1293 528844  
UK (local rate) 08459 212223  
Belgium Brussels +32 2 300 0730  
France Paris +33 1 4121 1256  
Germany Munich 0800 000 1456  
Italy Milan +39 02 48 4471

### USA

Niagara (toll free) +1 800 848 9800  
BRAZIL  
Sao Paulo +55 11 3952 5000  
ISRAEL  
Qiryat-Gat +972 8 681 0633

### ASIA PACIFIC

China (toll free) +86 400 111 9618  
India, Pune +91 20 4075 2222  
Japan, Yachiyo +81 47 458 8831  
Korea, Bundang +82 31 716 7070  
Singapore +65 6546 8408  
Taiwan R.O.C. Jhunan Town +886 3758 1000