

SCU-350 Control Unit

2

Page
112

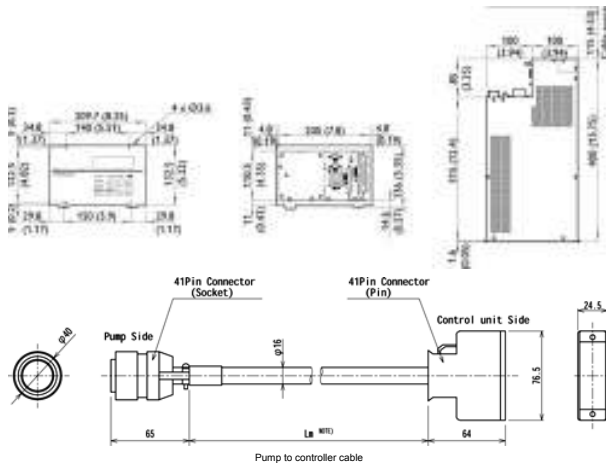


The Edwards new SCU-350 control unit is a EU-RoHS compliant controller for small sized turbo pumps. It is fully compatible with the current control unit models, but has an improved vibration property at low frequency range. It also has lower input voltage, which contributes to a reduction in electric capacity and tool power consumption. The SCU-350 has improved noise immunity and is equipped with universal voltage function for operation with supply voltage from 100-240 VAC without switching.

Features & Benefits

- Better vibration property
- No peak vibration movement across all frequencies
- Compact design
- Smallest size control unit in its class
- Energy saving

Dimensions



Applications

- STP301/451 series
- STPL301/L451 series

Technical Data

Magnetic bearing control system	Digital control
Input voltage	100-120 / 200-240V a.c.
Power consumption (Start up)	Max 350 VA
Power consumption (continuous)	Max 150 VA
Input frequency	50/60 ±2 Hz
Leak current	3.5 mA
Main breaker rated current	5 A
Motor drive system	3-phase DC
Allowable ambient temperature	0 to 40 °C (32 to 104 °F)
Weight	8 kg
Panel display	LCD

Ordering Information

Product Description	Order No.
SCU-350 Turbo Pump Control Unit	YT21Z3ZC0
SCU-350 Turbo Pump Control Unit with RS232	YT21ZEZC0
SCU-350A Turbo Pump Control Unit with ABS	YT21ZCZC0
Accessories & Spares	Order No.
Type B P/Cab 3M Ring Terminals	B70700090
Type B P/Cab 5M Ring Terminals	B70700040
Type B P/Cab 10M Ring Terminals	PT21Y0A00
Type B P/Cab 15M Ring Terminals	PT21Y0A01
STP straight connection cable, 3m	B70700010
STP straight connection cable, 5m	B70700000
STP straight connection cable, 10m	B70700130
STP straight connection cable, 15m	B70700070
STP straight connection cable, 20m	B70700150

SCU-800 Control unit

The Edwards SCU800 turbo pump control unit is a fully digital controller, and has perfect compatibility for middle sized pumps. New AVR (Auto vibration reduction) technology achieves a further reduction in vibration levels, and the advanced pre-maintenance call function provides advanced notice of precise maintenance time.

The reliability focused design, enhanced communication function, and perfect compatibility bring significant back up units savings and contributes to a reduction in total C₀O.



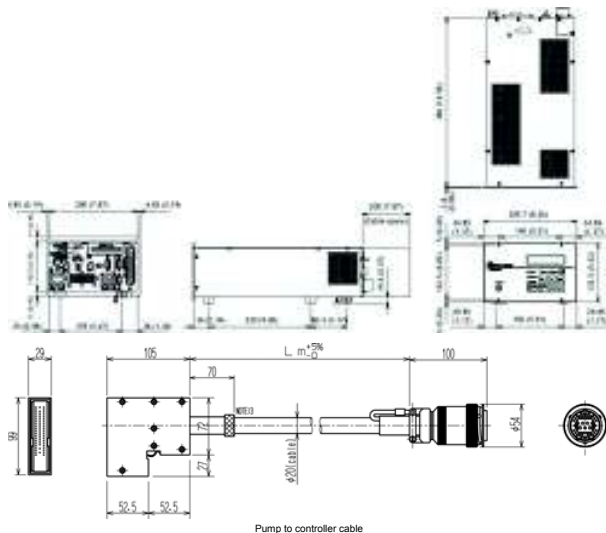
2

Page
113

Features & Benefits

- Universal Controller
- Single controller is used for middle sized pumps. No requirement for different controllers for each pump type
- Service back up stocks will be reduced
- Advanced Pre-maintenance Function
- AVR (Auto Vibration Reduction) minimizes the rotate system vibration during acceleration.

Dimensions



Applications

- STP603/1003 series
- STPH301/H451 series
- STPH803/H1303 series
- STPA803C/A1303 series
- STPA1603 series

Technical Data

Magnetic bearing control system	Digital control
Input voltage	100 – 120 ±10 V a.c. 200 – 240 ±10 V a.c.
Power consumption (without Temperature Management System, TMS)	Max 850 VA
Power consumption (with TMS)	Max 1200 VA
Input frequency	50/60 ±2 Hz
Leak current	3.5 mA
Main breaker rated current	10 A
Motor drive system	3-phase d.c.
Allowable ambient temperature	0 to 40 °C (32 to 104 °F)
Weight	8.5 kg
TMS control unit	Built-in
Serial communication function (RS232/RS485)	Standard
Panel display	LCD

Ordering Information

Product Description	Order No.
SCU-800 Turbo Pump Control Unit	YT49Z2Z00
Accessories & Spares	Order No.
Power Cable 5m	PT49Y0A00
Power Cable 10m	PT49Y0A01
Power Cable 15m	PT49Y0A02
Power Cable 20m	PT49Y0A03
STP straight connection Cable, 5m	B75130020
STP straight connection cable ,10m	B75130060
STP straight connection cable, 15M	B75130070
STP straight connection cable, 20M	B75130190

SCU-1600 Control unit

2

Page
114

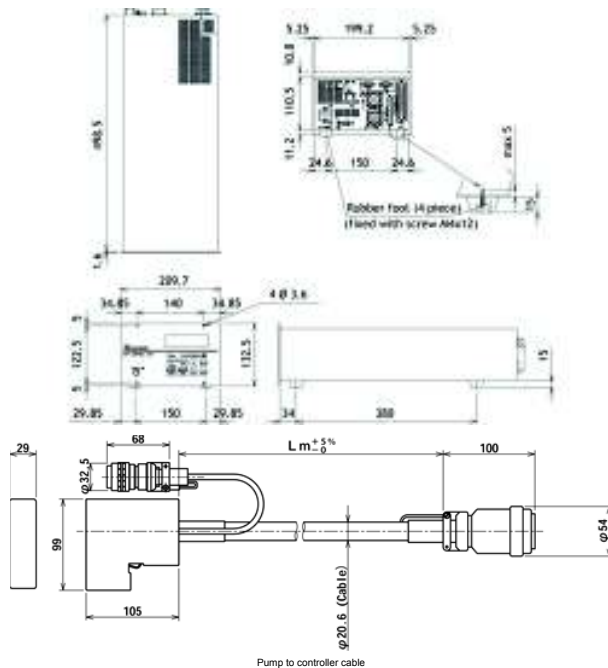


The fully digital SCU-1600 turbo pump control unit is compatible with STP turbo pumps ranging from 2000 ls^{-1} to 4500 ls^{-1} . It provides reliability, enhanced communication and pump compatibility with reduced back-up unit requirements and minimized overall cost of ownership.

Features & Benefits

- Advanced pre-maintenance function
- Precise maintenance timing
- Two stage warning messages
- Rotor imbalance monitoring
- Back-up bearing damage monitoring

Dimensions



Applications

- STP-A2203/2503/2803/3003/3503
- STP-F2203
- STP-XA2703/3203/4503
- STP-XH2603/3203

Technical Data

Magnetic bearing control system	Digital control
Input voltage	200 – 240 ± 10 V a.c.
Power consumption (without Temperature Management System, TMS)	Max 1600 VA
Power consumption (with TMS)	Max 2100 VA
Input frequency	50/60 ± 2 Hz
Leak current	3.5 mA
Main breaker rated current	15 A
Motor drive system	3-phase d.c.
Allowable ambient temperature	0 to 40 °C (32 to 104 °F)
Weight	12 kg
TMS control unit	Built-in
Serial communication function (RS232/RS485)	Standard
Operation switch	Start, Stop, Reset, Select, Up, Down, Enter, Manual/Remote
Panel display	LCD

Ordering Information

Product Description	Order No.
SCU-1600 Turbo Pump Control Unit	YT76Z0Z00
Accessories & Spares	Order No.
Power cable, 5m	YT76Y0A01
Power cable, 10m	YT76Y0A02
Power cable, 15m	YT76Y0A03
Power cable, 20m	YT76Y0A04
STP straight connection cable, 5m	B75030010
STP straight connection cable, 10m	B75030040
STP straight connection cable, 15m	B75030220
STP straight connection cable, 20m	B75030230