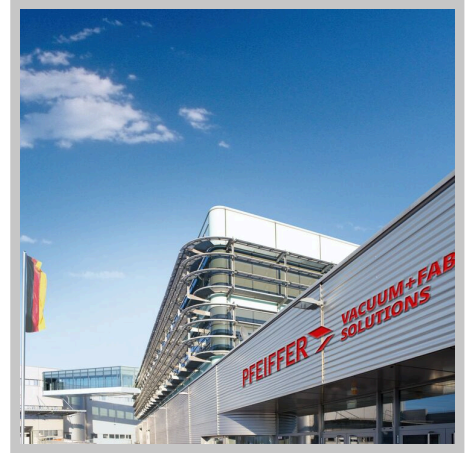


**Shielded venting valve,
AccessLink, 24 V DC,
1/8" thread for HiPace
80 Neo**



PFEIFFER 

Venting valve, shielded, with AccessLink

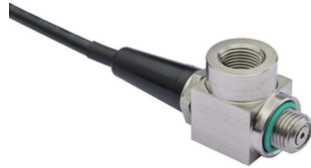
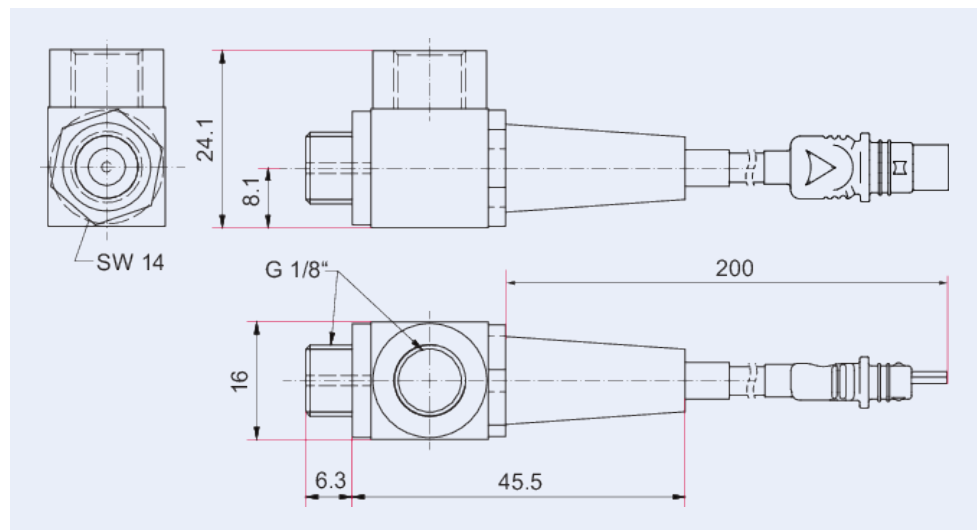


Illustration only

Shielded venting valve, AccessLink, 24 V DC, 1/8" thread for HiPace 80 Neo

- Intelligent accessories for connection to AccessLink accessory ports
- Venting mode, venting time and venting period adjustable via electronic drive unit
- Connection: G 1/8"
- Valve is normally closed
- Can be directly connected to accessory outputs C1 or D1 with AccessLink

Dimensions



Technical Data	Shielded venting valve, AccessLink, 24 V DC, 1/8" thread for HiPace 80 Neo
Electronic drive unit	TC 80
Control voltage	24 V DC
Helium leakage rate, max.	$<1 \cdot 10^{-9}$ Pa m ³ /s $<7.5 \cdot 10^{-9}$ Torr l/s $<1 \cdot 10^{-8}$ mbar l/s
Weight	45 g
Gas flow at atmospheric pressure	130 hPa·l/s
Electrical connection	AccessLink
Inlet pressure max.	1500 hPa (absolute)
Weight	45 g
Connection flange (in)	G 1/8"
Connection flange (out)	G 1/8"

Order number	Shielded venting valve, AccessLink, 24 V DC, 1/8" thread for HiPace 80 Neo
Shielded venting valve, AccessLink, 24 V DC, 1/8" thread for HiPace 80 Neo	PM Z01 295



Are you looking for an optimum vacuum solution?

Talk to us:

Pfeiffer Vacuum GmbH

Germany

T +49 6441 802-0

Or scan the barcode, to visit our web page:



<https://webportal.pfeiffer-vacuum.com/global/en/contact>

Follow Us On Social Media

#pfeiffervacuum



www.pfeiffer-vacuum.com

PFEIFFER 