

Claw clamp, aluminum EN AW-6061, DN 10-50 ISO-KF



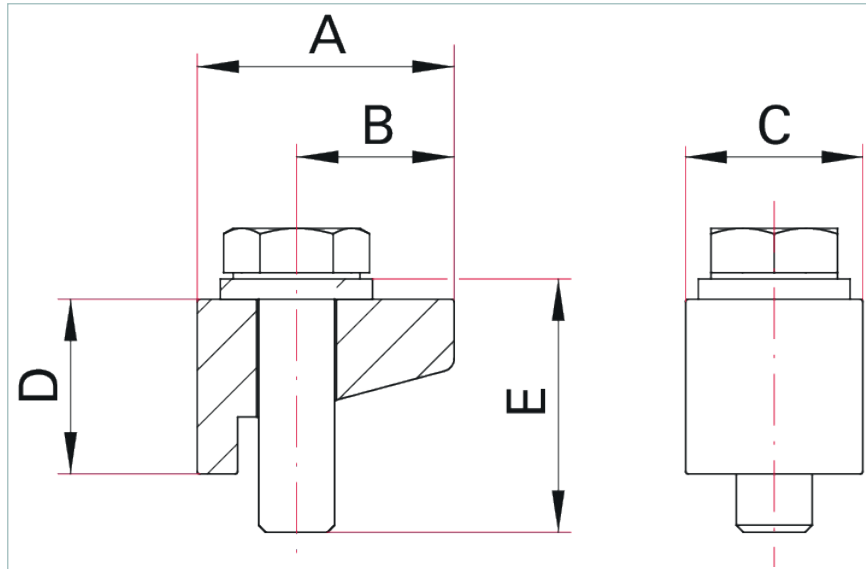
Similar Image

Claw clamp, aluminum EN AW-6061, DN 10-50 ISO-KF

- Suitable for use with elastomer seals
- For installing on a base plate with KF centering ring

Not to be used for the installation of turbo pumps! Use the fastening elements given in the corresponding operating instructions.

Dimensions



A	20.5 mm
B	12.5 mm
C	14 mm
D	14 mm
E	20 mm

Technical Data	Claw clamp, aluminum EN AW-6061, DN 10-50 ISO-KF
Holes	Needed number of tapped holes in base plate: 4 x90° (Thread: M6, depth: min. 6 mm)
Material	Aluminum EN AW-6061
Nominal diameter	DN 10 / 50 ISO-KF
Overpressure max.	500 hPa 375 Torr 500 mbar
Screw	Hexagon, A2-70, M6 x 20 mm
Temperature range	-196-200 °C -320.8-392 °F 77-473 K
Torque	max. 8 Nm
Order number	
Claw clamp	110BPR050-2

VACUUM SOLUTIONS FROM A SINGLE SOURCE

Pfeiffer Vacuum stands for innovative and custom vacuum solutions worldwide, technological perfection, competent advice and reliable service.

COMPLETE RANGE OF PRODUCTS

From a single component to complex systems:

We are the only supplier of vacuum technology that provides a complete product portfolio.

COMPETENCE IN THEORY AND PRACTICE

Benefit from our know-how and our portfolio of training opportunities!

We support you with your plant layout and provide first-class on-site service worldwide.

Are you looking for a
perfect vacuum solution?
Please contact us:

Pfeiffer Vacuum GmbH
Headquarters · Germany
T +49 6441 802-0
info@pfeiffer-vacuum.de

www.pfeiffer-vacuum.com

All data subject to change without prior notice.

PFEIFFER  **VACUUM**