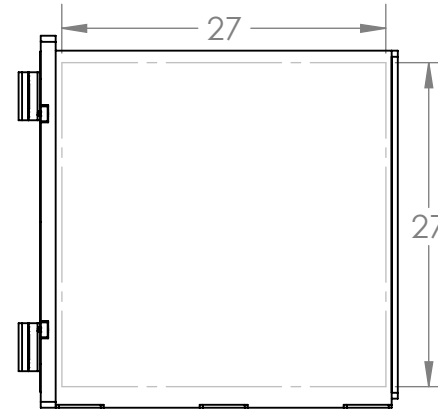
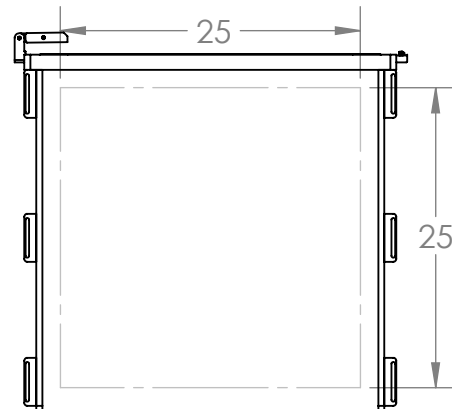
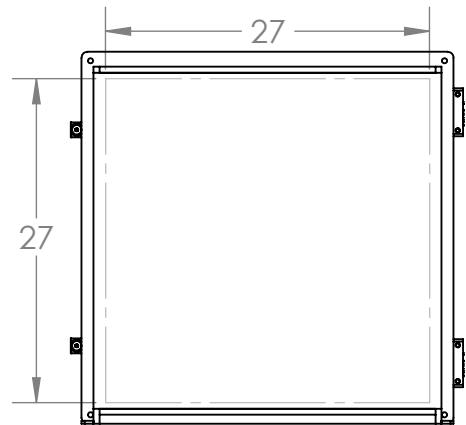
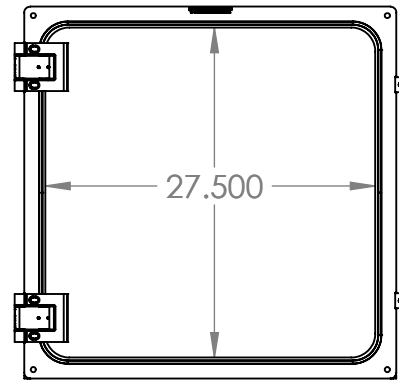
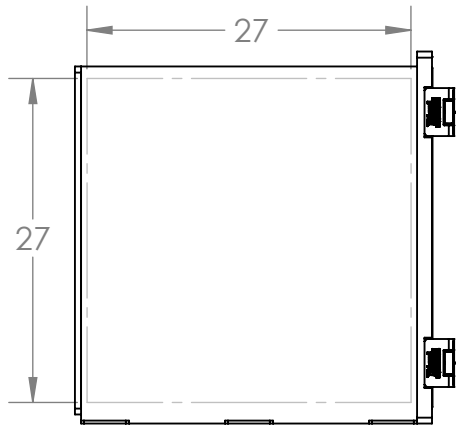
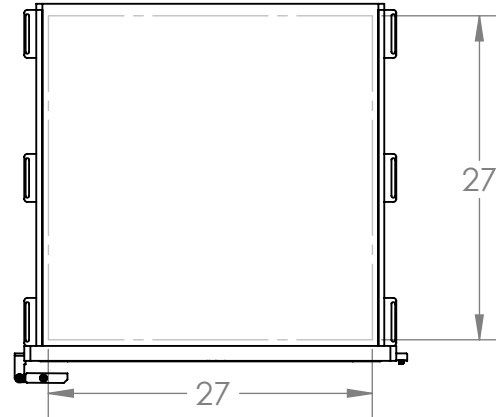


DASHED LINES INDICATE
PORT-ABLE AREA.

PLEASE KEEP ALL PORTS ENTIRELY
WITHIN THESE LINES UNLESS
OTHERWISE APROVED BY IDEAL VACUUM.

MARK SIDES OF CHAMBER WITH CIRCLE,
PORT TYPE, AND RELEVANT DIMENSIONS
TO INDICATE PORTING CHOICE.



STANDARD PORTS AND SIZES:

KF:

- KF-10: 1.2" DIAMETER
- KF-16: 1.2" DIAMETER
- KF-25: 1.6" DIAMETER
- KF-40: 2.2" DIAMETER
- KF-50: 3.0" DIAMETER

NPT:

- 1/8" : .7" DIAMETER
- 1/4" : .8" DIAMETER
- 3/8" : .9" DIAMETER
- 1/2" : 1.1" DIAMETER
- 3/4" : 1.4" DIAMETER

CF:

- CF 1.333": 1.4" DIAMETER
- CF 2.125": 2.2" DIAMETER
- CF 2.750": 2.8" DIAMETER
- CF 3.375": 3.4" DIAMETER
- CF 4.500": 4.5" DIAMETER
- CF 4.625": 4.7" DIAMETER
- CF 6.000": 6.0" DIAMETER
- CF 6.750": 6.8" DIAMETER
- CF 8.000": 8.0" DIAMETER
- CF 10.00": 10." DIAMETER
- CF 12.00": 12." DIAMETER

- 1" : 1.8" DIAMETER
- 1-1/4" : 2.3" DIAMETER
- 1-1/2" : 2.6" DIAMETER
- 2" : 3.0" DIAMETER
- 2-1/2" : 3.8" DIAMETER
- 3" : 4.3" DIAMETER

ASA:

- ASA 1.0" : 4.3" DIAMETER
- ASA 1.5" : 5.0" DIAMETER
- ASA 2.0" : 6.0" DIAMETER
- ASA 3.0" : 7.5" DIAMETER
- ASA 4.0" : 9.0" DIAMETER
- ASA 6.0" : 11." DIAMETER

NW:

- NW-63 : 3.80" DIAMETER
- NW-80 : 4.40" DIAMETER
- NW-100: 5.20" DIAMETER
- NW-160: 7.10" DIAMETER
- NW-200: 9.50" DIAMETER
- NW-250: 11.5" DIAMETER
- NW-320: 14.6" DIAMETER
- NW-400: 17.8" DIAMETER

THROUGH HOLE:

SPECIFY A DIAMETER
AND A TOLERANCE



SCALE	1:16	UNLESS OTHERWISE SPECIFIED DIMENSIONS ARE IN INCHES			
CAD REV.	X.6	ANGLES	.X	.XX	.XXX
DWG REV.	X	± .5°	± .02	± .01	± .005

5

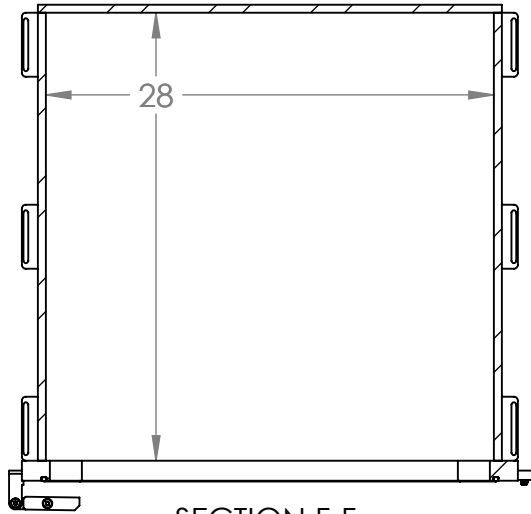
4

3

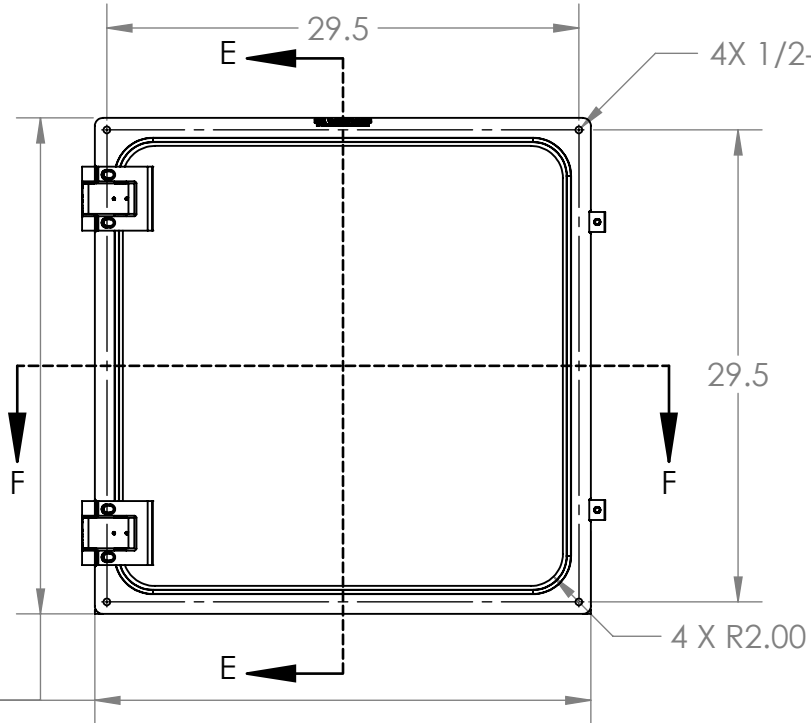
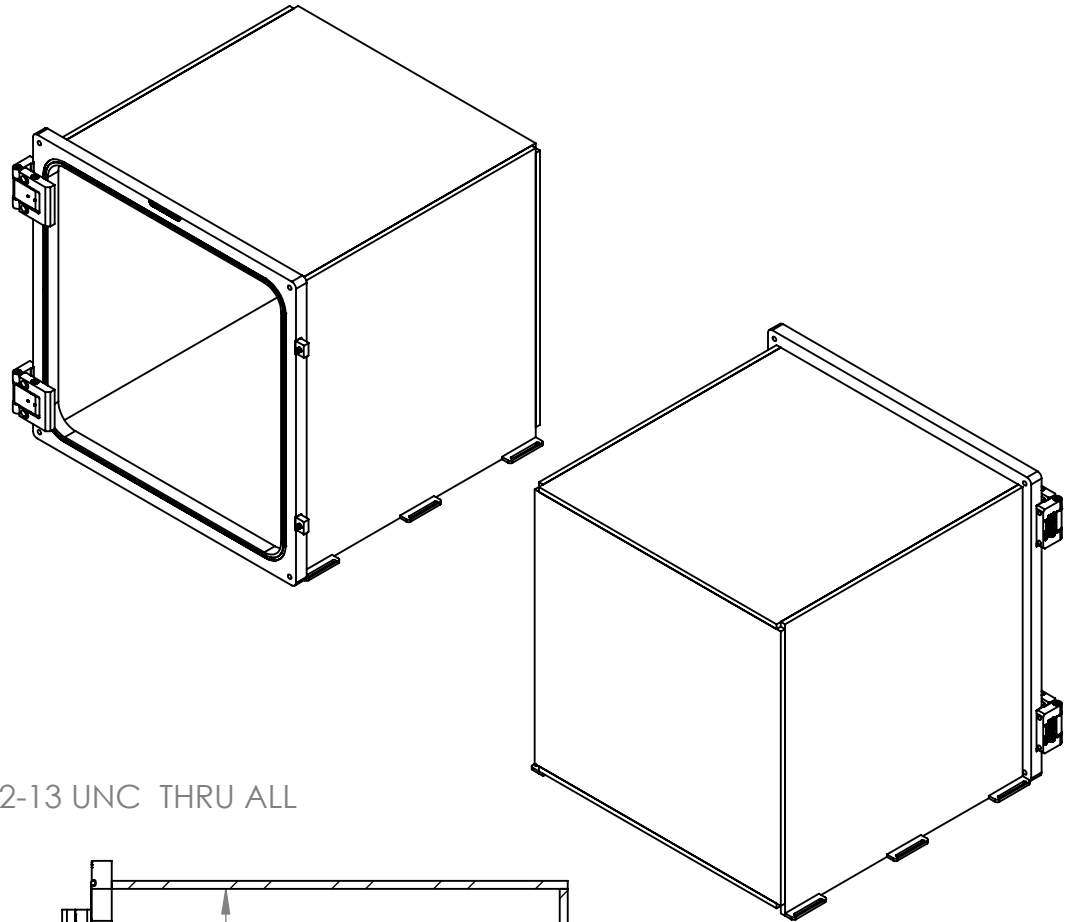
2

1

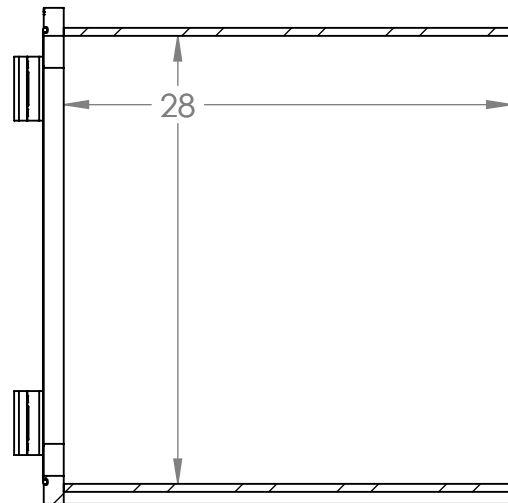
BASIC DIMENSIONS FOR YOUR CONVENIENCE



SECTION F-F



4X 1/2-13 UNC THRU ALL



SECTION E-E



SCALE	1:12	UNLESS OTHERWISE SPECIFIED DIMENSIONS ARE IN INCHES			
CAD REV.	X.6	ANGLES	.X	.XX	.XXX
DWG REV.	X	±.5°	±.02	±.01	±.005

5

4

3

2

1