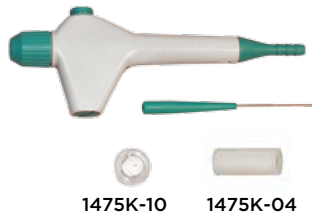


Vacuum Control | Pipettor System & Foot Switches

Handvac Pipettor System



The handheld pipettor system (1475K-10) provides pressure sensitive button control and enables clean transition between samples using a slight residual suction to prevent drippage; closing the adjustment screw stops all residual vacuum. Autoclavable

CAT No.	Description
1475K-10	Handheld pipettor with 1 channel stainless steel 40 mm aspiration adapter and Pasteur pipette adapter
1475K-04	Replacement rubber adapter for Pasteur pipette adapter

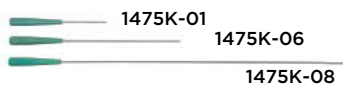
Pipettors for Disposable Pipette Tips



- Adapters with tip ejector; Autoclavable

CAT No.	Description
1475K-03	1-channel adapter for disposable tips, without ejector
1475K-05	8-channel adapter for disposable tips, with ejector
1475K-09	Pipettors for disposable pipette tips

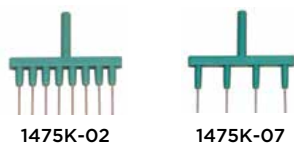
Cannula-Style Needles



- Stainless steel tips; Autoclavable

CAT No.	Description
1475K-01	Adapter, stainless steel tip, 40 mm
1475K-06	Adapter, stainless steel tip, 150 mm
1475K-08	Adapter, stainless steel tip, 280 mm

Microliter Format Manifolds



- Work well with wide range of media.

CAT No.	Description
1475K-02	8 channel adapter, stainless steel tips, 40 mm
1475K-07	4-channel adapter, stainless steel tips, 40 mm
1475K-20	Spare receiver kit-includes: 6 ft. tubing, 1.2 autoclavable jar w/lid and two hydrophobic filters

On/Off Foot Switch



- Hands free On/Off pump operations
- No adapters or special connections needed
- Plugs directly into the power source

On/Off foot switches are compatible with selected dry vacuum pump models. Switches handle up to 15 amps.

CAT. No. 1430A & 1430B come with a 3-prong U.S. standard plug with 8 Ft. cord, CSA, NEMA & UL enclosure type 1. CAT. No. 1430C comes with a male and female IEC plug, 8Ft. cord, CE and plugs directly into the IEC connection on the pump.

Pump Model.	Power	Switch Logic	CAT. No.
All DryFast® Diaphragm Pumps	115V/60Hz	Maintained On/Off	1430A
	115V/60Hz	On when pressed/normally off	1430B
All WOB-L Piston Pumps	90-230V with IEC connections	On when pressed/normally off	1430C

* Except Models 2511, 2522, 2534