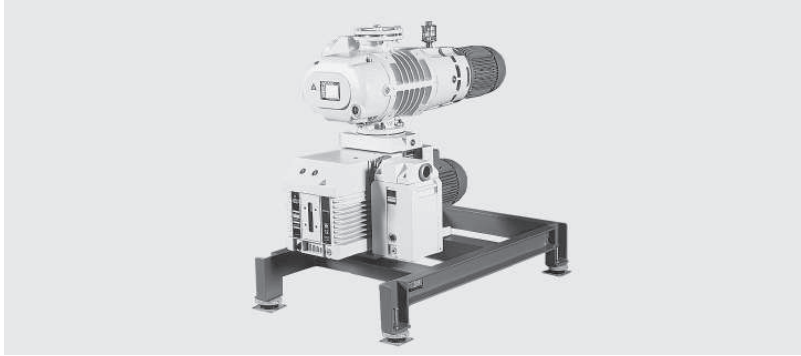


# Products

## Oil Sealed RUTA Pump Systems Three-Stage, with Two-Stage TRIVAC Backing Pumps, Adaptor Version



RUTA WAU501/D65B/A

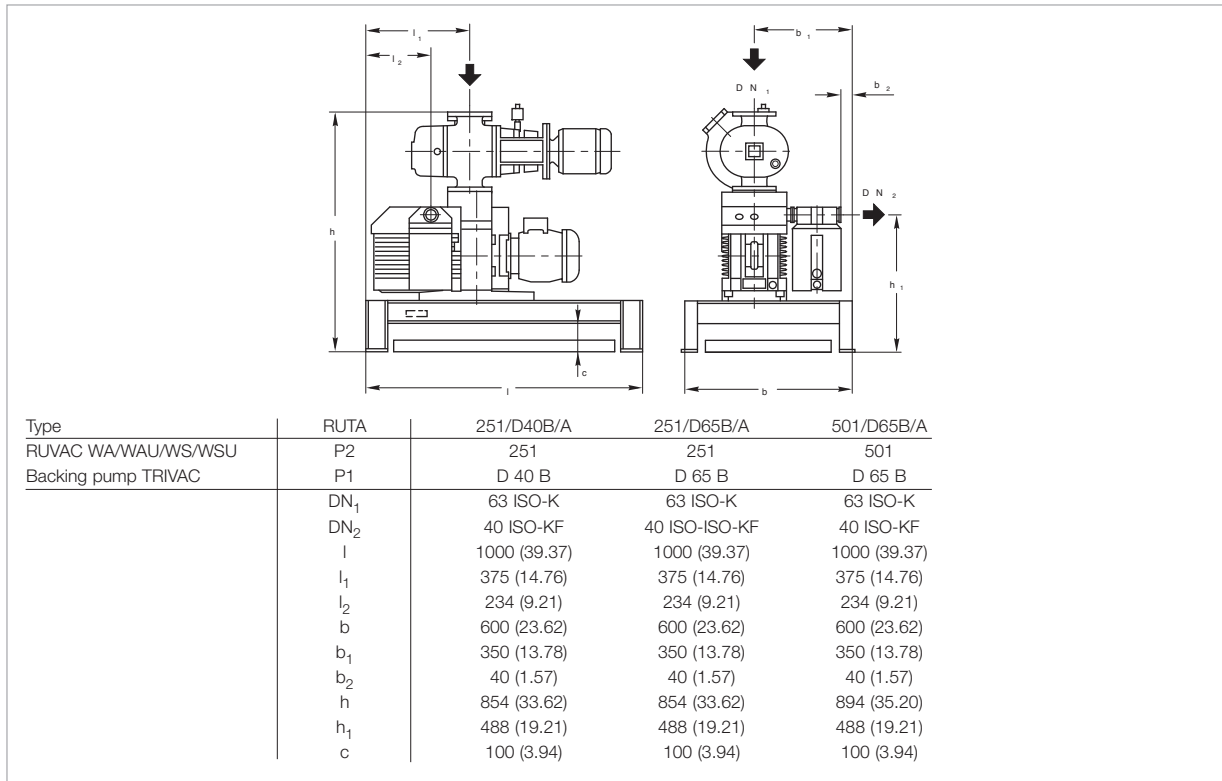


### Standard Equipment

- Exhaust filter
- Oil collecting pan
- Manually operated gas ballast
- Crane eyes on the frame
- Floor mounting
- The oil is supplied with the pump
- CE approval

### Options

- Frequency converter RUVATRONIC RT for controlling the speed of the Roots pump
- Oil filter
- 24 V DC gas ballast valve
- Sound proofing box
- Vibration absorbers
- Castors
- Different types of floor mounts
- Oil drain valve on each pump
- Exhaust filter with oil return line
- Special motors
- Electric control systems



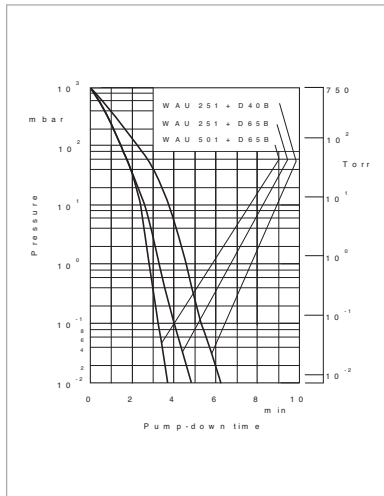
Dimensional drawing for the pump systems with TRIVAC D40/65 B backing pumps on pallet; dimensions in brackets ( ) are in inch

## Technical Data, 50 Hz

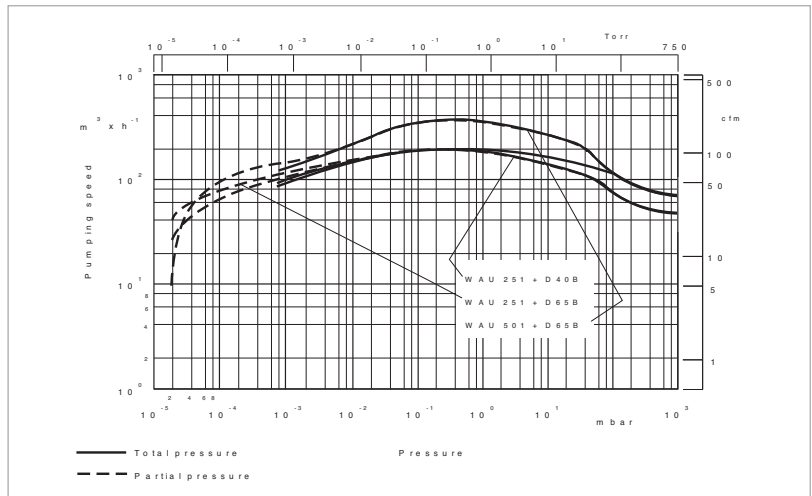
		<b>RUTA WAU</b>		
		<b>251/D40B/A</b>	<b>251/D65B/A</b>	<b>501/D65B/A</b>
RUVAC (WA/WAU/WS/WSU possible)	P2	251	251	501
Backing pump TRIVAC	P1	D 40 B	D 65 B	D 65 B
Pumping speed, 50 Hz at 10 <sup>-1</sup> mbar (7.5 x 10 <sup>-2</sup> Torr)	m <sup>3</sup> x h <sup>-1</sup> (cfm)	200.0 (117.8)	210.0 (123.7)	380.0 (223.8)
Ultimate partial pressure	mbar (Torr)	< 2 x 10 <sup>-5</sup> (< 1.5 x 10 <sup>-5</sup> )	< 2 x 10 <sup>-5</sup> (< 1.5 x 10 <sup>-5</sup> )	< 2 x 10 <sup>-5</sup> (< 1.5 x 10 <sup>-5</sup> )
Ultimate total pressure with gas ballast	mbar (Torr)	< 8 x 10 <sup>-4</sup> (< 6 x 10 <sup>-4</sup> )	< 8 x 10 <sup>-4</sup> (< 6 x 10 <sup>-4</sup> )	< 8 x 10 <sup>-4</sup> (< 6 x 10 <sup>-4</sup> )
Installed motor power 400 V, 50 Hz	kW (hp)	2.6 (3.5)	3.3 (4.5)	4.4 (6.0)
Electrical power consumption at 10 <sup>-1</sup> mbar (7.5 x 10 <sup>-2</sup> Torr)	kW (hp)	2.0 (2.7)	2.5 (3.4)	2.7 (3.7)
Noise level max.	dB(A)	64	65	67
without gas ballast at 1 mbar (0.75 Torr)	dB(A)	62	63	63
Oil filling, total, approx.	l (qt)	3.3 (3.49)	4.0 (4.23)	4.3 (4.55)
Weight, total, approx.	kg (lbs)	245.0 (540.2)	260.0 (573.3)	305.0 (627.5)
Connecting flange Inlet port	DN <sub>1</sub>	63 ISO-K	63 ISO-K	63 ISO-K
Outlet port	DN <sub>2</sub>	40 ISO-KF	40 ISO-KF	40 ISO-KF

## Ordering Information

		<b>RUTA WAU</b>		
		<b>251/D40B/A</b>	<b>251/D65B/A</b>	<b>501/D65B/A</b>
		<b>Part No.</b>	<b>Part No.</b>	<b>Part No.</b>
RUVAC (WA/WAU/WS/WSU possible)	P2	WAU 251	WAU 251	WAU 501
Backing pump TRIVAC	P1	D 40 B	D 65 B	D 65 B
Pump system, complete (adaptor version), pallet mounted, with Roots vacuum pump RUVAC WAU		<b>023 06</b>	<b>023 07</b>	<b>023 08</b>
Frequency converter RUVATRONIC (see description in Chapter "Accessories")		RT 5/251 <b>500 001 381</b>	RT 5/251 <b>500 001 381</b>	RT 5/501 <b>500 001 382</b>



Pump-down time diagram for a 1000 l tank at 50 Hz



Pumping speed diagram at 50 Hz