

## MODEL 250 WATER COOLED EXHAUST TRAP



### Water cooled trap

- Controlled collection of exhaust solids
- Prevents expensive blockages
- Easy operation and disposal

LPCVD nitride processes using dichlorosilane ( $\text{SiH}_2\text{Cl}_2$ ) and ammonia ( $\text{NH}_3$ ) generate ammonium chloride ( $\text{NH}_4\text{Cl}$ ). On cooling at atmospheric pressure,  $\text{NH}_4\text{Cl}$  rapidly condenses out as a solid in exhaust pipes.

The Model 250 water cooled trap provides a cost effective solution for controlled deposition of these solid by-products. Both the trap chamber and the liner are water-cooled, so  $\text{NH}_4\text{Cl}$  is deposited on the liner. The liner has a large capacity, and is easy and quick to change. Typically, the life-time of a liner is six months.

The Model 250 removes solids only. For applications where you need to both remove solids and treat residual ammonia, use the water cooled trap in conjunction with a downstream GRC that is fitted with C150A (ammonia) cartridges. For more information about abatement of exhaust gases, refer to the application summary: see page 4-83.

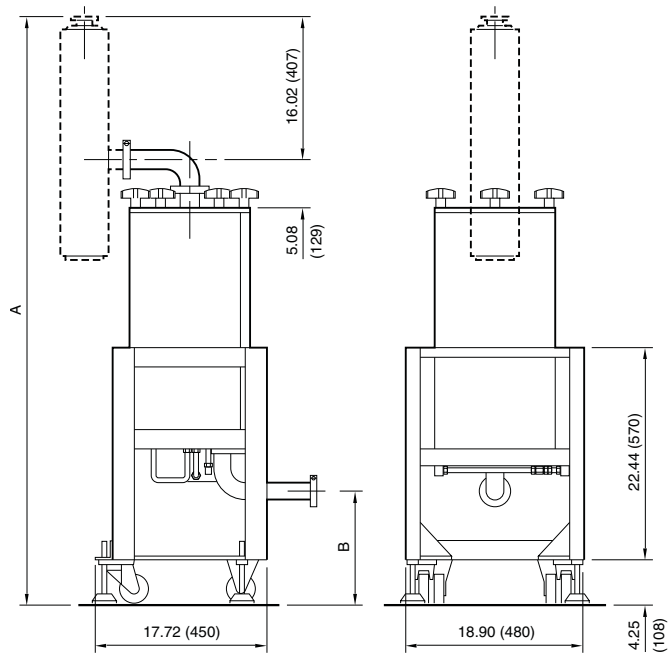
## TECHNICAL DATA

### Connections

Cooling water supply	3/8 inch BSP male quick connect
Process gas	NW40
Exhaust gas	NW40

### Services required

Cooling water supply	7 bar gauge
----------------------	-------------



### Pump

QDP, pump outlet	<b>A</b> 1628 mm	<b>B</b> 325 mm
QDP, exhaust silencer outlet	1448 mm	155 mm

## ORDERING INFORMATION

PRODUCT DESCRIPTION	ORDERING NUMBER
Model 250 water cooled exhaust trap	A53114000
ACCESSORIES	ORDERING NUMBER
Water cooled exhaust trap connection and TMS kit, for system with	
250/500 mechanical booster pump	A53114060
1200 mechanical booster pump	A53114065
CONSUMABLE SPARES	ORDERING NUMBER
Replacement trap liners for model 250	A53115020

idealvac.com  
**Ideal**  
 vacuum products  
 (505)872-0037  
 idealvac.com