

# *Instruction Manual*

## Vacuum Interlock Switch IS16K

Description	Item Number
Vacuum Interlock Switch IS16K	D059-14-000





# Declaration of Conformity

We, Edwards,  
Manor Royal,  
Crawley,  
West Sussex, RH10 9LW, UK

declare under our sole responsibility, as manufacturer and person within the EU authorised to assemble the technical file, that the product(s)

Vacuum Interlock Switch  
IS16K

D059-14-000

to which this declaration relates is in conformity with the following standard(s) or other normative document(s)

EN61010-1: 2001 Safety Requirements for Electrical Equipment for Measurement, Control and Laboratory Use. General Requirements

and fulfils all the relevant provisions of

2006/95/EC Low Voltage Directive  
2004/108/EC Electromagnetic Compatibility (EMC) Directive

*Note: This declaration covers all product serial numbers from the date this Declaration was signed onwards.*

Mr L. Marini, Technical Manager

9 December 2009

Date and Place

*This product has been manufactured under a quality system registered to ISO9001*

# Contents

Section	Page
1	INTRODUCTION ..... 1
1.1	Scope and definitions ..... 1
1.2	Description ..... 1
2	TECHNICAL DATA ..... 2
2.1	Operating conditions ..... 2
2.2	Performance ..... 2
2.3	Mechanical data ..... 2
2.4	Electrical data ..... 2
2.5	Product item number ..... 3
3	INSTALLATION ..... 4
3.1	Unpacking and inspection ..... 4
3.2	General ..... 4
3.3	Connection to the Vacuum System ..... 4
3.4	Connection to the Electrical Circuit ..... 4
4	OPERATION ..... 6
4.1	Adjustment ..... 6
5	MAINTENANCE ..... 7
6	STORAGE AND DISPOSAL ..... 8
6.1	Storage ..... 8
6.2	Disposal ..... 8
	Index ..... 9

For return of equipment, complete the HS Forms at the end of this manual.

# Illustrations

Figure	Page
1 Vacuum switch plug connections .....	5
2 Dimensions of VS16K vacuum switch .....	7

# Tables

Table	Page
1 Maximum switch ratings .....	2

# 1 INTRODUCTION

## 1.1 Scope and definitions

This manual provides installation, operation and maintenance instructions for the Edwards IS16K Vacuum Interlock Switch. Read this manual before attempting to install and operate the IS16K.

This manual contains essential safety information which supplements the safety features of the IS16K. Safety procedures are highlighted as WARNING and CAUTION instructions. You must obey these instructions. The use of WARNINGS and CAUTIONS is defined below.



---

### **WARNING**

Warnings are given where failure to observe the instruction could result in injury or death to people.

---

---

### **CAUTION**

Cautions are given where failure to observe the instruction could result in damage to the equipment, associated equipment and process.

---

## 1.2 General description

The Edwards IS16K Vacuum Interlock Switch is designed for applications where the electrical circuits within the vacuum chamber must be de-energised when the vacuum system is let up to atmosphere.

Typical applications would be the interlocking of H.T. and R.F. power supplies on vacuum coating systems. The interlocking switch consists of a positive break microswitch operated by a snap action diaphragm to ensure rapid separation of the microswitch contacts.

The diaphragm is enclosed within the vacuum switch housing which is surrounded by atmospheric pressure and is coupled to the vacuum system by a NW16 flange. The absolute switch point pressure will therefore vary by the same amount as the atmospheric pressure.

The set-point is non-adjustable and cannot be tampered with.

## 2 TECHNICAL DATA

### 2.1 Operating conditions

Temperature range - operating	-5°C to 40°C
Temperature range - storage	-20°C to 70°C
Relative humidity (non condensing)	10 to 90%
Maximum operating altitude	3000 m
Installation category (IEC1010)	2 (IEC664/664A)
Pollution category (IEC1010)	2
Enclosure rating	IP40

### 2.2 Performance

Set-point	Within the range 250 to 500 mbar below atmospheric pressure
Maximum switch point differential	100 mbar
Leak rate	$< 1 \times 10^{-9}$ mbar litre/sec <sup>-1</sup>
Maximum overpressure	1 bar gauge (2 bar absolute)

### 2.3 Mechanical data

Weight (unpacked)	0.5 kg
Weight (packed)	0.6 kg
Vacuum connection	NW16 Flange
Volume added to vacuum system	7 cm <sup>3</sup>
Materials exposed to vacuum system	Stainless steel and Armco 17/7PH

### 2.4 Electrical data

Electrical connection	mPm 283 plug
Accessory supplied	mPm 183 mating electrical socket

Maximum switch ratings for different loads and voltages:

Table 1 - Maximum switch ratings

Volts a.c. 50/60Hz	Resistive Load Amps	Tungsten Lamp Load Amps	Inductive Load Amps
125	10	5.0	10
250	10	5.5	10

### 2.5 Product item number

Description	Item Number
Vacuum Interlock Switch	D059-14-000

## 3 INSTALLATION

### 3.1 Unpacking and inspection

Remove all packing materials and protective covers and check the IS16K for damage. If the IS16K is damaged, notify your supplier and the carrier in writing within three days; state the Item Number of the IS16K together with your order number and your supplier's invoice number. Retain all packing materials for inspection. Do not use the IS16K.

### 3.2 General

The vacuum switch should be mounted as close as possible to the point at which the pressure is to be measured. Use a short branch tube with an internal diameter no less than that of the switch vacuum connection. Long, narrow and angled connections can cause significant errors.

This equipment is not protected from dripping water from above, unless mounted with the vacuum flange pointing downwards.

### 3.3 Connection to the Vacuum System



#### **WARNING**

Do not allow the internal pressure to be higher than 1 bar gauge (2 bar absolute). If the pressure in your system can be higher than 1 bar gauge, you must fit a suitable pressure relief valve. Overpressure of the switch could cause injury to persons.

The vacuum switch may be mounted in any orientation but mounting with the vacuum switch vertical will prevent the possibility of debris falling into the vacuum port and affecting the performance of the switch.

### 3.4 Connection to the Electrical Circuit



#### **WARNING**

Ensure that the electrical installation of the Vacuum Switch conforms with your local and national safety requirements. It must be connected to a suitably fused and protected electrical supply and a suitable earth point.

#### **CAUTION**

Ensure that the circuit connected to the vacuum switch is suitably fused to prevent the switch contact rating being exceeded. The fuse rating must not exceed 10 amps.



#### **WARNING**

If, in your application, failure of this switch could lead to a safety hazard, it is recommended that the switch should be wired in series with another interlocking device, for example chamber lid microswitch, to provide a double level of protection.

Connect the vacuum switch to the equipment using the four pole mPm connector supplied. The contacts on this connector are internally wired as follows:-

Figure 1 - Vacuum switch plug connections



Earth connection.

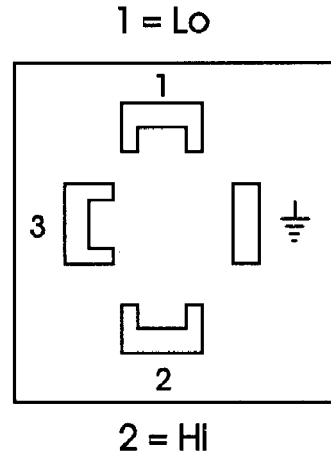
Com

Common

Lo

Contact made when system pressure is lower than set-point.

3 = Com



**CAUTION**

To ensure that the socket cable gland strain relief is effective a cable with a minimum diameter of 6 mm must be used.

Select a three or four core cable of a rating suitable for the power supply to be switched. One core should be coloured green/yellow for the earth connection.

Thread the cable through the cable gland on the mPm socket cover and connect to the appropriate terminals as shown on the diagram.

Tighten the cable gland and connect the socket to the switch using the sealing gasket and locking screw provided.

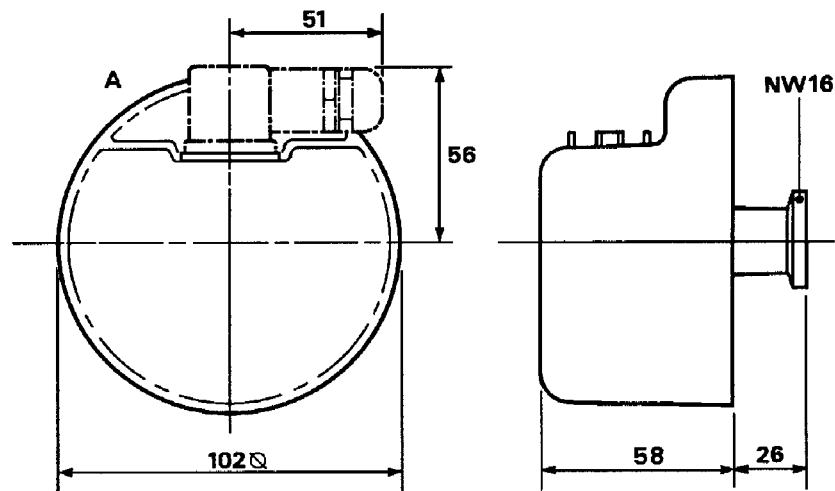


## 4 OPERATION

### 4.1 Adjustment

The IS16K Vacuum interlock switch is pre-set to operate in the range of 250 to 500 mbar below atmospheric pressure. No user adjustment is available.

Figure 2 - Dimensions of IS16K vacuum switch



## 5 MAINTENANCE



### *WARNING*

Ensure that maintenance is done by a suitably trained and supervised technician. Obey your local and national safety requirements.

To ensure correct operation this vacuum switch should be tested once per year or every 10 000 cycles whichever is sooner.

To test for correct operation proceed as follows:

1. Disconnect the electrical supply from the vacuum switch.
2. Connect an electrical continuity meter between the pin marked 'com' and the pin marked 'Lo'. Refer to Figure 1 for pin connections.
3. With the IS16K at atmosphere verify that the meter reads open circuit.
4. Reduce the pressure to below 500 mbar (as measured on a vacuum gauge) and check that the meter reads short circuit.
5. Raise the pressure to above 500 mbar and check that the meter reads open circuit again.

The outer surfaces of the switch may be cleaned by wiping with a dry cloth. Avoid the use of solvents that may attack the moulded cover.

This product contains no user serviceable parts.

## 6 STORAGE AND DISPOSAL

### 6.1 Storage

Store in a cool dry place. Do not exceed the limits specified in [Section 2](#).

### 6.2 Disposal

Dispose of the IS16K in accordance with any local or national safety requirements.

Particular care must be taken if the switch has been used in a hazardous environment.

This page has been intentionally left blank.

# Index

## A

Adjustment .....5

## C

Connection to the Electrical Circuit .....3

Connection to the Vacuum System .....3

## E

Electrical data .....2

## G

General .....3

General description .....1

## I

INSTALLATION .....3

Introduction .....1

## M

MAINTENANCE .....6

Mechanical data .....2

## O

Operating conditions .....2

OPERATION .....5

## P

Performance .....2

Product item number .....2

## S

Scope and definitions .....1

STORAGE AND DISPOSAL .....7

## T

TECHNICAL DATA .....2

## U

Unpacking and inspection .....3

# Index

This page has been intentionally left blank.

This page has been intentionally left blank.



## Return of Edwards Equipment - Procedure

### INTRODUCTION

Before returning your equipment, you must warn Edwards if substances you used (and produced) in the equipment can be hazardous. This information is fundamental to the safety of our Service Centre employees and will determine the procedures employed to service your equipment.

**Complete the Declaration (HS2) and send it to Edwards before you dispatch the equipment.** It is important to note that this declaration is for Edwards internal use only, and has no relationship to local, national or international transportation safety or environmental requirements. As the person offering the equipment for shipment, it is your responsibility to ensure compliance with applicable laws.

### GUIDELINES

- Equipment is 'uncontaminated' if it has not been used, or if it has only been used with substances that are not hazardous. Your equipment is 'contaminated' if it has been used with any substances classified as hazardous under EU Directive 67/548/EEC (as amended) or OSHA Occupational Safety (29 CFR 1910).
- If your equipment has been used with radioactive substances, biological or infectious agents, mercury, polychlorinated biphenyls (PCB's), dioxins or sodium azide, you must decontaminate it before you return it to Edwards. You must send independent proof of decontamination (for example a certificate of analysis) to Edwards with the Declaration (HS2). Phone Edwards for advice.
- If your equipment is contaminated, you must either:
  - Remove all traces of contamination (to the satisfaction of laws governing the transportation of dangerous/hazardous substances).
  - Or, properly classify the hazard, mark, manifest and ship the equipment in accordance with applicable laws governing the shipment of hazardous materials.

**Note: Some contaminated equipment may not be suitable for airfreight.**

### PROCEDURE

1. Contact Edwards and obtain a Return Authorisation Number for your equipment.
2. Complete the Return of Edwards Equipment - Declaration (HS2).
3. If the equipment is contaminated, you must contact your transporter to ensure that you properly classify the hazard, mark, manifest and ship the equipment, in accordance with applicable laws governing the shipment of contaminated/hazardous materials. As the person offering the equipment for shipment, it is your responsibility to ensure compliance with applicable law. **Note: Equipment contaminated with some hazardous materials, such as semiconductor by-products, may not be suitable for airfreight - contact your transporter for advice.**
4. Remove all traces of hazardous gases: pass an inert gas through the equipment and any accessories that will be returned to Edwards. Where possible, drain all fluids and lubricants from the equipment and its accessories.
5. Seal up all of the equipment's inlets and outlets (including those where accessories were attached) with blanking flanges or, for uncontaminated product, with heavy gauge tape.
6. Seal equipment in a thick polythene/polyethylene bag or sheet.
7. If the equipment is large, strap the equipment and its accessories to a wooden pallet. If the equipment is too small to be strapped to a pallet, pack it in a suitable strong box.
8. E-mail via scan, fax or post a copy of the original with signature of the Declaration (HS2) to Edwards. The Declaration must arrive before the equipment.
9. Give a copy of the Declaration (HS2) to the transporter. You must tell your transporter if the equipment is contaminated.
10. Seal the original Declaration in a suitable envelope: attach the envelope securely to the outside of the equipment package, in a clear weatherproof bag.  
**WRITE YOUR RETURN AUTHORISATION NUMBER CLEARLY ON THE OUTSIDE OF THE ENVELOPE OR ON THE OUTSIDE OF THE EQUIPMENT PACKAGE.**

## Return of Edwards Equipment - Declaration

Return Authorisation Number: \_\_\_\_\_

You must:

- Know about all of the substances which have been used and produced in the equipment before you complete this Declaration
- Read the Return of Edwards Equipment - Procedure (HS1) before you complete this Declaration
- Contact Edwards to obtain a Return Authorisation Number and to obtain advice if you have any questions
- Send this form to Edwards before you return your equipment as per the procedure in HS1

**SECTION 1: EQUIPMENT**

Manufacturer's Product Name \_\_\_\_\_

Manufacturer's Part Number \_\_\_\_\_

Manufacturer's Serial Number \_\_\_\_\_

Has the equipment been used, tested or operated?

YES  Go to Section 2      NO  Go to Section 4**IF APPLICABLE:**

Tool Reference Number \_\_\_\_\_

Process \_\_\_\_\_

Failure Date \_\_\_\_\_

Serial Number of Replacement Equipment \_\_\_\_\_

**SECTION 2: SUBSTANCES IN CONTACT WITH THE EQUIPMENT**

Are any substances used or produced in the equipment:

- Radioactive, biological or infectious agents, mercury, poly chlorinated biphenyls (PCBs), dioxins or sodium azide? (if YES, see Note 1)      YES  NO
- Hazardous to human health and safety?      YES  NO

**Note 1:** Edwards will not accept delivery of any equipment that is contaminated with radioactive substances, biological/infectious agents, mercury, PCB's, dioxins or sodium azide, unless you:

- Decontaminate the equipment
- Provide proof of decontamination

**YOU MUST CONTACT EDWARDS FOR ADVICE BEFORE YOU RETURN SUCH EQUIPMENT**

**SECTION 3: LIST OF SUBSTANCES IN CONTACT WITH THE EQUIPMENT**

Substance name	Chemical Symbol	Precautions required (for example, use protective gloves, etc.)	Action required after a spill, leak or exposure

**SECTION 4: RETURN INFORMATION**

Reason for return and symptoms of malfunction: \_\_\_\_\_

\_\_\_\_\_

If you have a warranty claim:      • who did you buy the equipment from? \_\_\_\_\_

• give the supplier's invoice number \_\_\_\_\_

**SECTION 5: DECLARATION**

Print your name: \_\_\_\_\_ Print your job title: \_\_\_\_\_

Print your organisation: \_\_\_\_\_

Print your address: \_\_\_\_\_

\_\_\_\_\_

Telephone number: \_\_\_\_\_ Date of equipment delivery: \_\_\_\_\_

I have made reasonable enquiry and I have supplied accurate information in this Declaration. I have not withheld any information, and I have followed the Return of Edwards Equipment - Procedure (HS1).

Signed: \_\_\_\_\_ Date: \_\_\_\_\_

**Note: Please print out this form, sign it and return the signed form as hard copy.**

This page has been intentionally left blank.

## EUROPE/UNITED KINGDOM

Manor Royal  
Crawley  
West Sussex, RH10 9LW  
Tel:  
Office +44 (0) 1293 528844  
Sales & Service 08459 21 22 23  
Fax:  
Office +44 (0) 1293 533453  
Sales & Service  
+44 (0) 1293 534149

## AMERICAS

One Edwards Park  
301 Ballardvale Street  
Wilmington, MA 01887  
Tel +1 978 658 5410  
Fax +1 978 658 7969  
Toll Free (USA only):  
Tel 1800 848 9800

## CANADA

5860 Chedworth Way  
Mississauga, Ontario  
Canada, L5R 0A2  
Tel +1 800 387 4076  
Fax +1 905 501 1225

## BRAZIL

Rua Bernado Wrona 222  
02710 São Paulo-SP  
Brazil  
Tel +55 11 3952 5000  
Fax +55 11 3965 2766

## GERMANY

Ammerthalstraße 36  
85551 Kirchheim  
Munich  
Tel:  
Sales 0 800 000 14 56  
Service 0 800 000 14 57  
Fax:  
Office +49 89 99 19 18 99  
Sales & Service  
+49 89 99 19 18 88

## ITALY

Via Carpaccio 35  
20090 Trezzano sul Naviglio  
Milan  
Office +39 02 48 4471  
Sales +39 02 48 447242  
Service +39 02 48 447217  
Fax +39 02 48 401638

## FRANCE

125 Avenue Louis Roche  
92238 Gennevilliers, Cedex  
Paris  
Tel:  
Office +33 1 47 98 24 01  
Sales +33 1 41 21 12 45  
Service +33 1 41 21 12 45  
Fax:  
Office +33 1 47 98 44 54  
Sales & Service  
+33 1 41 21 12 38

## BELGIUM

Bergensesteenweg 709  
B1600 Sint-Pieters-Leeuw  
Brussels  
Tel +32 2 363 0030  
Fax +32 2 363 0064

## INDIA

203 Surya Kiran Building  
19 Kasturba Gandhi Marg  
New Delhi - 110 001  
India  
Tel +91 11 4151 0065  
Fax +91 11 4151 0245

## ISRAEL

5 Habarzel Blvd  
Gat 2000 Industrial Zone  
Qiryat Gat 82000  
Tel +972 8 681 0633  
Fax +972 8 681 0640

## CHINA

23 Fu Te Road(N),  
Wai Gao Qiao Free Trade Zone  
Pudong, Shanghai,  
200131, China  
Tel +86 21 5866 9618  
Fax +86 21 5866 9993

## JAPAN

1078-1, Yoshihashi  
Yachiyo-shi, Chiba  
Japan, 276-8523  
Tel +81 47 458 8831  
Fax +81 47 458 8835

## SINGAPORE

42 Loyang Drive  
Loyang Industrial Estate  
Singapore 508962  
Tel +65 6546 8408  
Fax +65 6546 8407

## TAIWAN

No. 434 Chung-Hwa Road  
Toufen Town, Miaoli County  
351 Taiwan  
Tel +886 37 611422  
Fax +886 37 611401

## KOREA

Daewoo Engineering Building  
5th Floor  
9-3 Sunae-dong  
Bundang-gu, Sunnam City  
Kyungki-do, Korea  
Tel +82 31 716 7070  
Fax +82 31738 1001

## AUSTRALIA

1688 Ipswich Road  
Rocklea Qld, 4106  
Australia  
Tel +61 4 0199 1193  
Fax +61 2 9886 9249

PLEASE CONTACT ANY OF THE ABOVE FOR DETAILS OF OTHER SALES AND SERVICE CENTERS IN YOUR AREA.

© Edwards Limited 2007. All rights reserved  
Edwards and the Edwards logo are trade marks of Edwards Limited.

[www.edwardsvacuum.com](http://www.edwardsvacuum.com)  
[info@edwardsvacuum.com](mailto:info@edwardsvacuum.com)

Produced by Technical Publicity

 EDWARDS