

E2M1 and E2M1.5 PUMPS COMMON ITEMS PARTS LIST

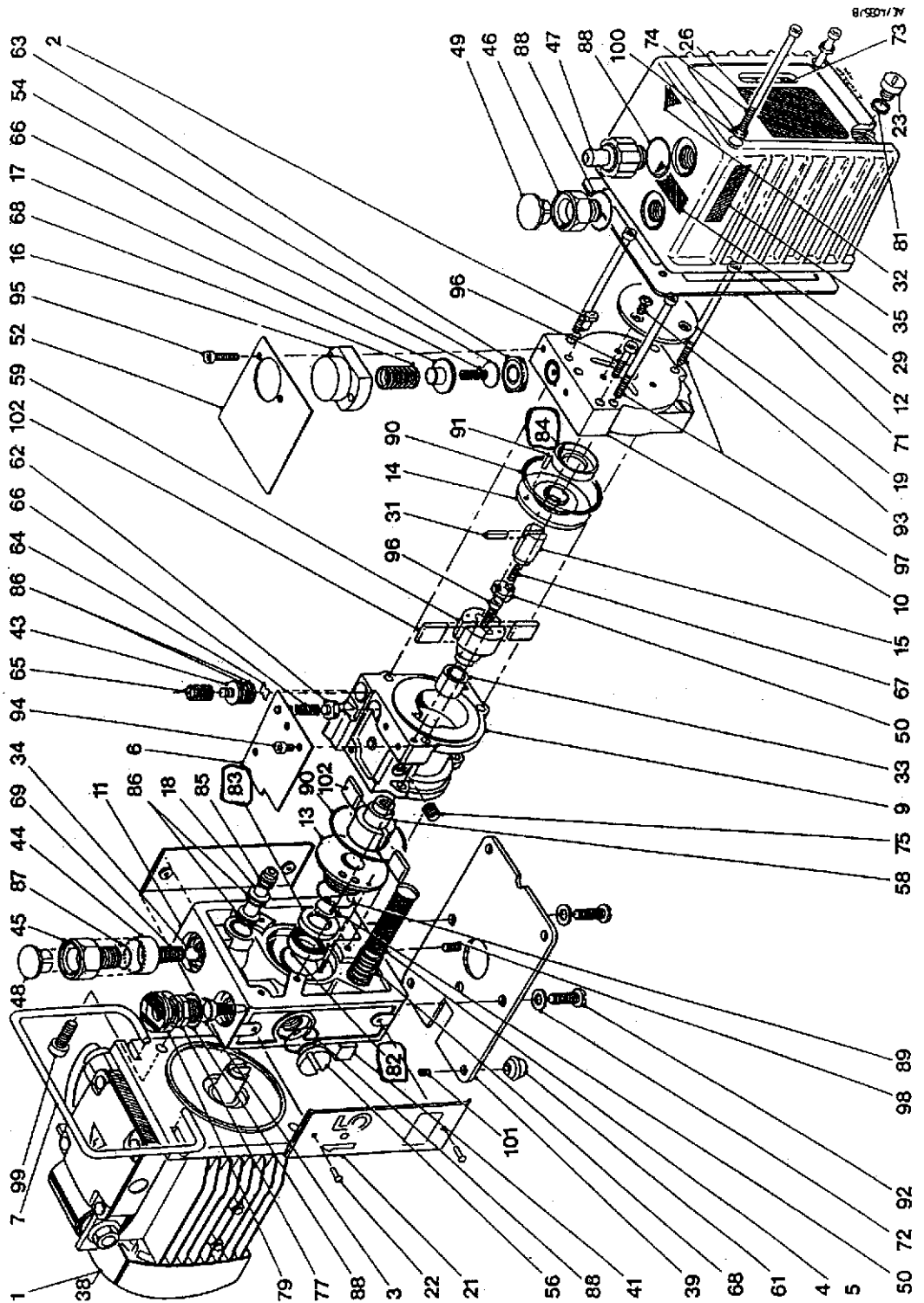


Figure 1 - GA (exploded view) of the E2M1 and E2M1.5 pumps common items

Item	Description	Quantity	Item Number	Kit No.(s)
1	Motor assembly	1		
2	Relief valve assy	1	A37101016	
3	Inlet filter assy	1	A22305045	
4	Oil filter assy	1		1
5	Inlet strainer mesh	1		1
6	Exhaust baffle assy	1	A37101036	
7	Handle	1	A37103010	
9	Stator	1	A37101025	
10	End cover	1	A37101002	
11	Adaptor	1	A37101023	
12	Oil box	1	A37101004	
13	Front bearing plate	1	A37101005	
14	Rear bearing plate	1	A37101006	
15	Oil pump drive shaft	1	A37101007	
16	Distributor housing	1	A37101008	
17	Distributor weight	1	A37101009	
18	Ballast tube	1	A37101031	
19	End plate	1	A37101012	
21	Side panel (E2M1)	2	A37223017	
	Side panel (E2M1.5)	2	A37122017	
22	Rivet (nylon)	4	A37101021	
23	1/8" BSP plug	1		
26	Label 'Pump details'	1		1
29	Label 'Remove plug'	1	A20001201	
31	Oil pump blade	1		2
32	Label 'Caution'	1	A20001200	
33	Inner ring (15 mm id x 20 mm od)	1	A20405012	
34	Ball 1/4" dia (stl)	1	A20414003	
35	Label 'Hot surface'	1	A20001202	
38	Label 'Electric shock'	1	A20001203	
39	Base plate	1	A20499043	
41	Felt pad	1		1
43	Plug	1	A37101022	
44	Ballast filter	1		1
45	Ballast knob	1	A25908160	
46	Filler plug	1	A25908161	
47	Exhaust nozzle assy	1	A25908164	
48	Ballast insert	1	A25908159	
49	Oil filler insert	1	A25908163	
50	Drive member	2		1
52	Oil box baffle	1	A25916004	
54	Distributor plate	1	A25970057	
56	3/8" BSP plug	1	A26002013	
58	Rotor high vacuum	1	A26401059	
59	Rotor low vacuum	1	A26401060	

For A372-23-919 and A372-22-919 motor assembly item number is A071-05-048

For A372-23-902 and A372-22-902 motor assembly item number is A071-05-049

Table 2 - E2M1 and E2M1.5 pumps common items parts list: sheet 1 of 2

Item	Description	Quantity	Item Number	Kit No.(s)
61	Foot	4	A26501024	
62	Valve pad	1		1
63	Distributor valve	1		1
64	Gas-ballast valve	1		1
65	Spring 15.5 x 8.0	1		1
66	Spring 17.0 x 8.5	2		1
67	Spring 19.0 x 6.2	1		1
68	Spring 28.0 x 13.3	2		1
69	Spring 50.0 x 7.0	1		1
71	Oil box gasket	1		1
72	Washer M8	2		
73	Sight glass	1	A29201003	
75	Taper pressure plug - 1/8" BSP	1	H03517004	
77	Adaptor 3/8" BSP x KF10	1	C10501061	
79	Protective cap - size 10	1	D32201070	
81	1/8" BSP Dowty seal	1		1
82	Oil seal Simrit 16 x 30 x 7	1	H02109099	1
83	Oil seal 16 x 30 x 7 (Viton)	1	H02109078	1
84	Oil seal 16 x 30 x 7 (Viton)	1	H02109079	1
85	'O' ring 6.6 id x 2.4 section	1		1
86	'O' ring 7.9 id x 2.6 section	4		1
87	'O' ring 12.6 id x 2.4 section	1		1
88	'O' ring 21.6 id x 2.4 section	4		1
89	'O' ring 25.5 id x 3.0 section	1		1
90	'O' ring 52.3 id x 5.7 section	2		1
91	Spring pin 1/8" x 1/2" lg (st stl)	2		
92	Pan hd screw M8 x 20	2		
93	Csk screw M5 x 10 (ms Ni)	3		
94	Cap ht screw M5 x 8	3		
95	Cap ht screw M5 x 20	2		
96	Cap ht screw M5 x 25	1		
97	Cap ht screw M5 x 90	5		
98	Hx hd screw M5 x 10 (ms)	1		
99	Screw ht M8 x 20	2		
100	Washer S coil M5 (ms Ni)	2		
101	Screw soc set M5 x 10	4		
102	Blade	4		2

Table 2 - E2M1 and E2M1.5 pumps common items parts list: sheet 2 of 2

CLEAN AND OVERHAUL KIT FOR E2M0.7, E2M1, E2M1.5

A371-01-131

PUMP ITEM NUMBER	DESCRIPTION	QUANTITY	PART NUMBER	SIZE/mm AND FEATURE (IF APPLICABLE) L x DIAM (x WIDTH) * = INSIDE DIAM (X)=NO. OF COILS
4	OIL FILTER ASSEMBLY	1	A223-05-047	
5	INLET STRAIN MESH	1	A223-05-056	
23	OIL PLUG	1	A007-14-012	
44	GAS BALLAST FILTER	1	A259-07-202	
50	DRIVE MEMBER	1	A259-08-051	
62	VALVE PAD	1	A265-01-036	
63	DISTRIBUTOR VALVE	1	A265-01-035	
64	GAS BALLAST VALVE	1	A259-06-600	
65	GAS BALLAST VALVE SPRING	1	A271-02-021	15.5 x 8.0 (7.5)
66	SPRING	2	A271-02-016	17.0 x 8.5 (10)
67	SHAFT SPRING	1	A271-02-034	19.0 x 6.2 (12)
68	OIL SUPPLY SPRINGS	2	A271-02-036	28.0 x 13.3 (8) *
69	GAS BALLAST SPRING	1	A271-02-010	50 x 7 (24)
71	GASKET	1	A271-59-637	
74	SEAL	1	H021-04-012	(PRE 1980'S PUMPS)
81	DOWTY SEAL	2	H021-04-001	
82	OUTER SHAFT SIMRIT SEAL	1	H021-09-099	16 x 30 x 7 (DRR IS PRINTED INSIDE THE SEAL)
83	INNER SHAFT SEAL (VITON)	1	H021-09-078	16 x 30 x 7, VITON, (DRW IS PRINTED INSIDE THE SEAL)
84	OIL PUMP SHAFT SEAL	1	H021-09-079	16 x 30 x 7 (METAL CASED)
85	GAS BALLAST TUBE O-RING	1	H021-22-028	6.6 x 2.4
86	O-RING	4	H021-26-116	7.9 x 2.6 (VITON)
87	GAS BALLAST O-RING	1	H021-20-034	12.6 x 2.4
88	O-RING	5	H021-20-042	21.6 x 2.4
89	O-RING	1	H021-20-065	25.5 x 3.0
90	O-RING	2	H021-20-118	52.3 x 5.7
(25)	O-RING	1	H021-24-002	15 x 5 * (FOR E2M1.5 FITTINGS PACK)
-	O-RING	1	H021-20-009	PLUG SEAL FOR MS3 PUMP

BLADE KIT FOR E2M0.7, E2M1, E2M1.5

A371-01-130

PUMP ITEM NUMBER	DESCRIPTION	QUANTITY	PART NUMBER
30	BLADES	4	A204-02-150
31	OIL PUMP BLADE	1	A204-02-147