
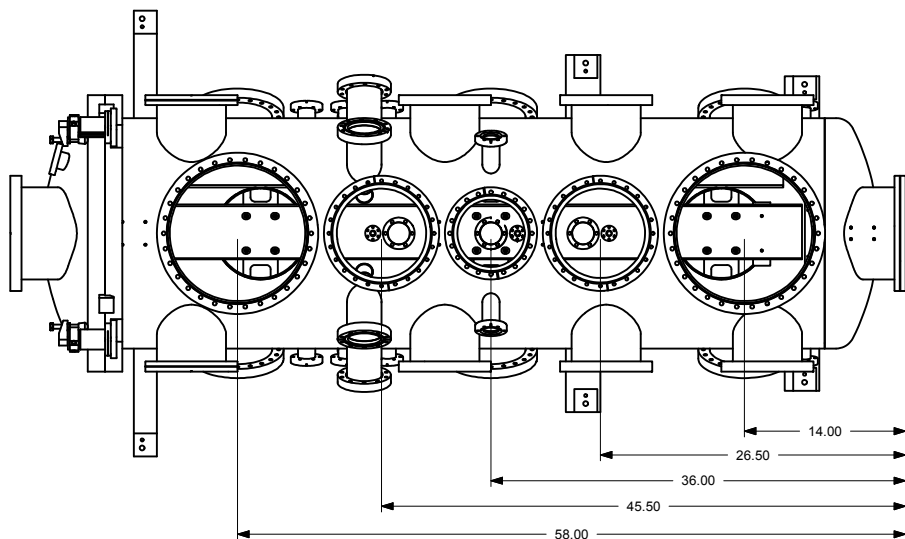
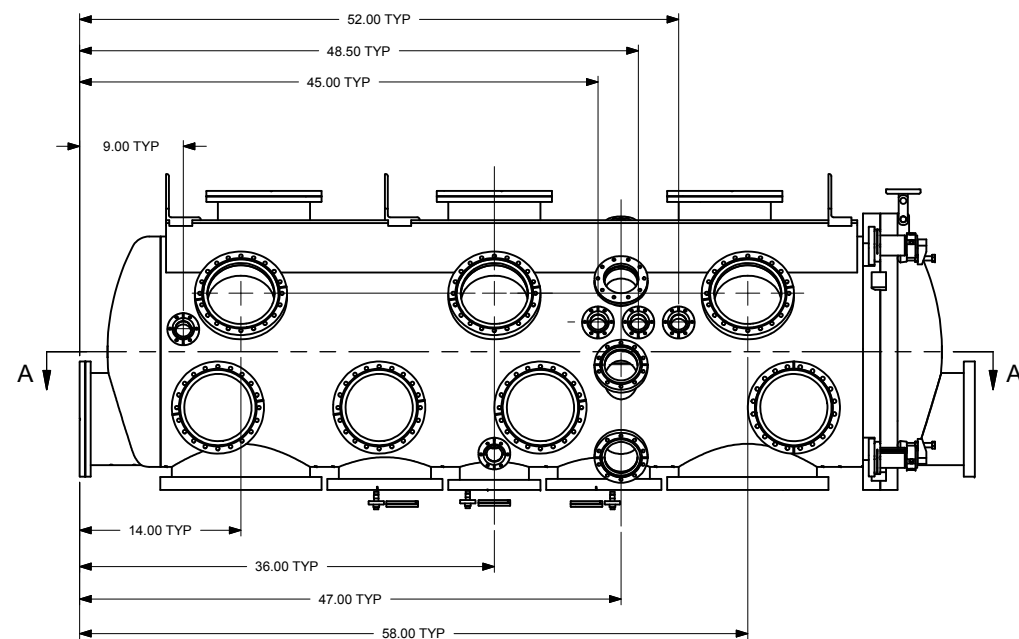
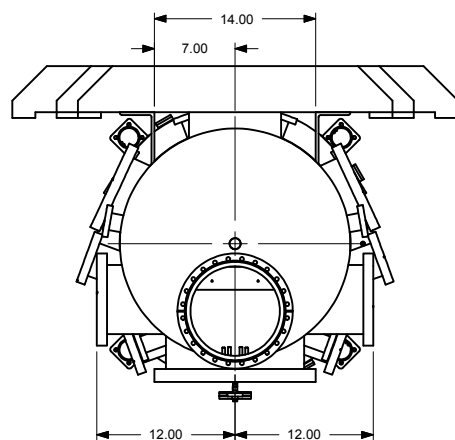
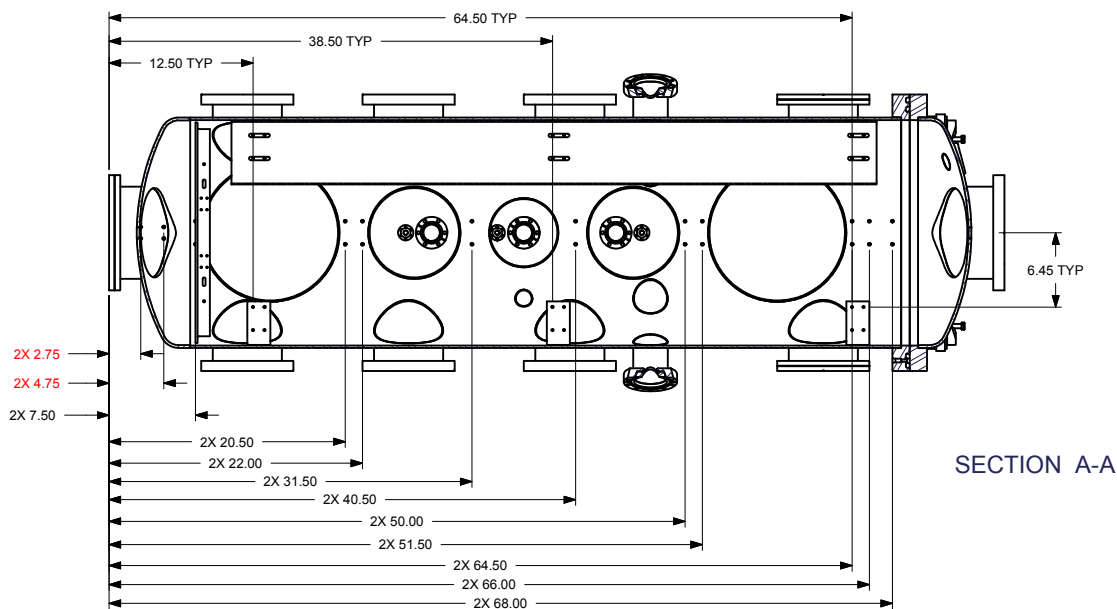

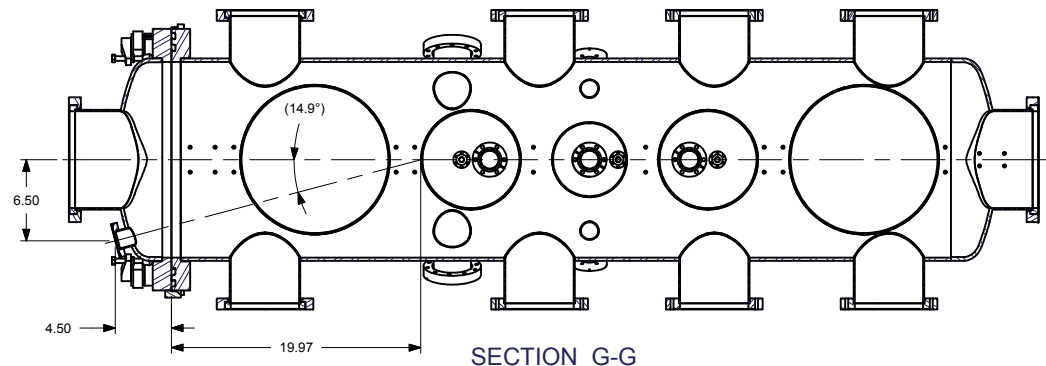
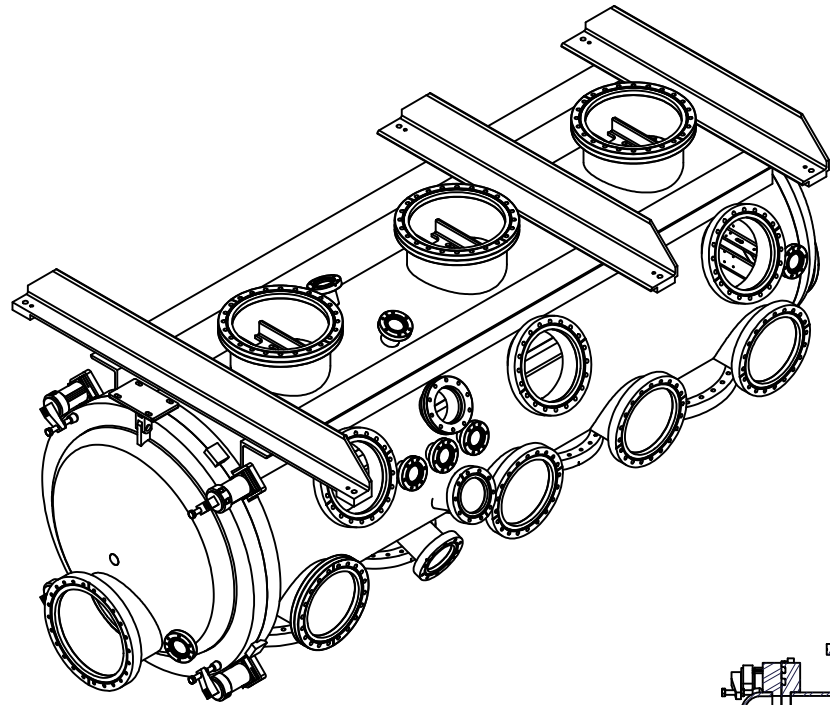


Est Weight: 1,200 Lbs.

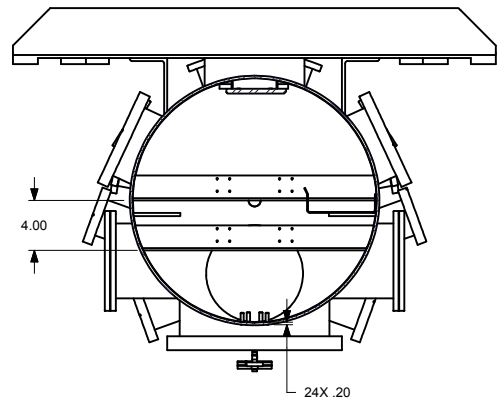
13	4	EA	SP99K1154R	MOUNT,CLAMP,REID	
12	4	EA	SP99K1154S	CLAMP,REID TC-8415	
11	2	EA	SP93-6929X	FLG,CF14NR,THRU,MDC#11037	
10	13	EA	100883000	CF,N/R,THRU,2.75,BLANK	
9	6	EA	100885500	CF,N/R,THRU,4.62",BLANK	
8	5	EA	100888000	CF,N/R,THRU,10.00 BLANK	
7	14	EA	100887000	CF,N/R,THRU,8.00"x6.00"	
6	1	EA	99K1154WW	BRKT, OA SLIDE MOUNT	
5	1	EA	99K1154ZZ	LINK,LIFT,NREL DOOR	
4	1	EA	99K1154VV	FLG, NREL 1700-11-06	
3	2	EA	99K1154TT	FLG, NREL 1700-11-05	
2	1	EA	99K1154BB	DOOR,CHMB,NREL# 1700-11	
1	1	EA	99K1154AA	BODY,CHMB,NREL# 1700-11	
ITEM	QTY	UNIT	PART NUMBER	DESCRIPTION	
Parts List					
<div>The information disclosed on this drawing was originated and is the property of MKS, HPS® Products. MKS reserves all design, patent, proprietary, use, sale, manufacturing, and reproduction rights thereto. The information may not be disclosed to third parties without the written approval of MKS, HPS® Products, 5330 Sterling Dr., Boulder, CO 80301, USA.</div>				ORIGINATOR DATE	10/21/2008
				ORIGINATING ENGINEER	M CROWLEY
				ORIGINATING DRAFTER	M CROWLEY
				REVISION ENGINEER	
				PROJECT	
CHMB,NREL# 1700-11-00					
		SHEET	1	DRAWING NUMBER	
		DRAWING SIZE	D		REV
		99K1154		A	



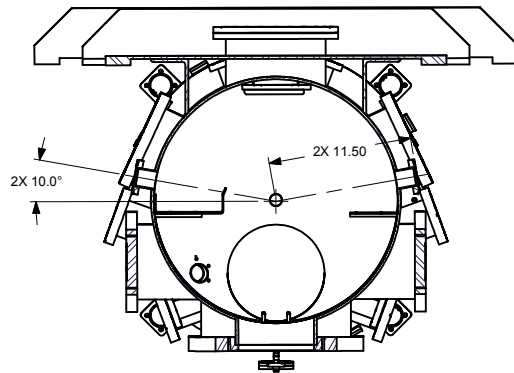
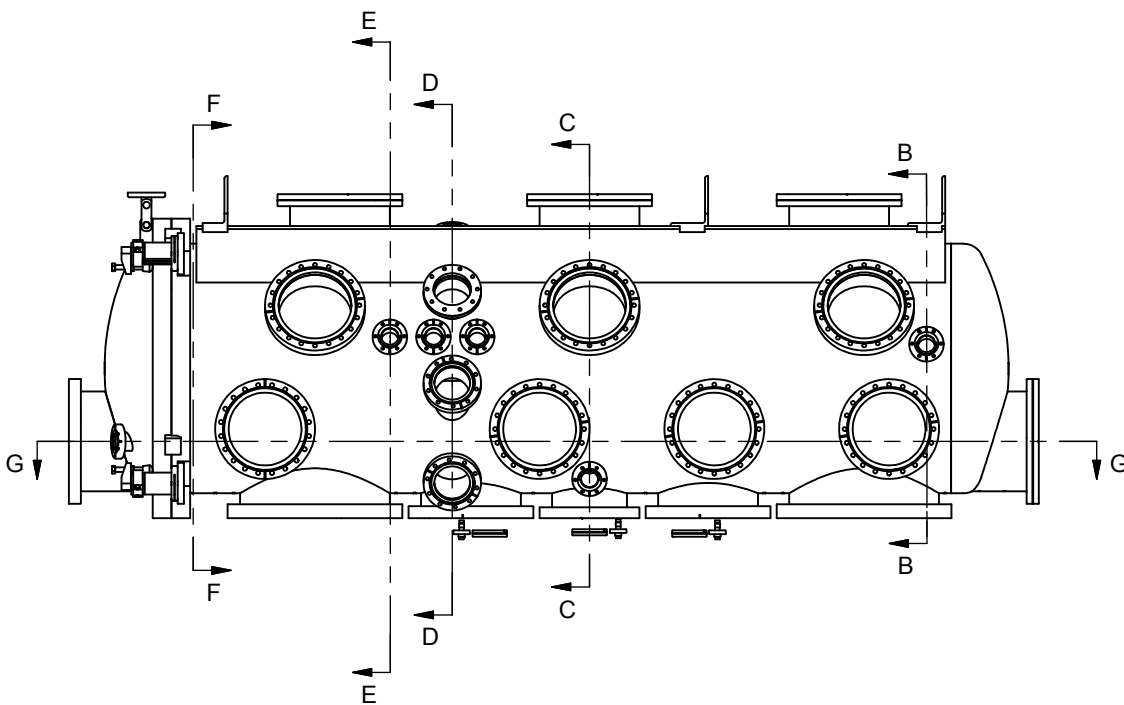
<p>The information disclosed on this drawing was originated and is the property of MKS, Inc.® Products. MKS reserves all design, patent, proprietary, use, sale, manufacturing, and reproduction rights hereto. The information may be disclosed to third parties without the express approval of MKS. HPS® Products: 5530 Sterling Dr., Boulder, CO 80301, USA.</p>		<p>ORIGINATION DATE 10/21/2008</p>		<p>SCALE NTS</p>	
		<p>ORIGINATING ENGINEER M CROWLEY</p>		<p>REVISION: ENGINEER</p>	
		<p>ORIGINATING DRAFTER M CROWLEY</p>		<p>PROJECT</p>	
		<p>CHMB,NREL# 1700-11-00</p>			
<p>SHEET 2</p>		<p>DRAWING SIZE D</p>		<p>DRAWING NUMBER 99K1154</p>	
<p>MKS® Products</p>				<p>REV A</p>	



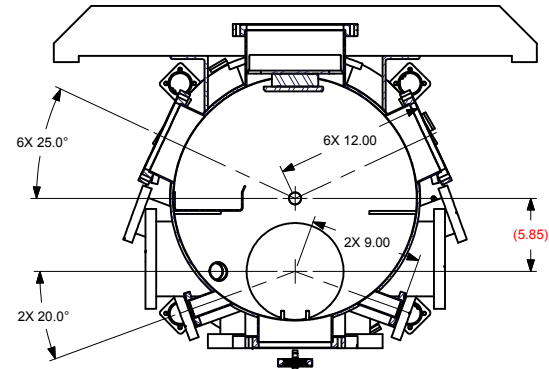
SECTION G-G



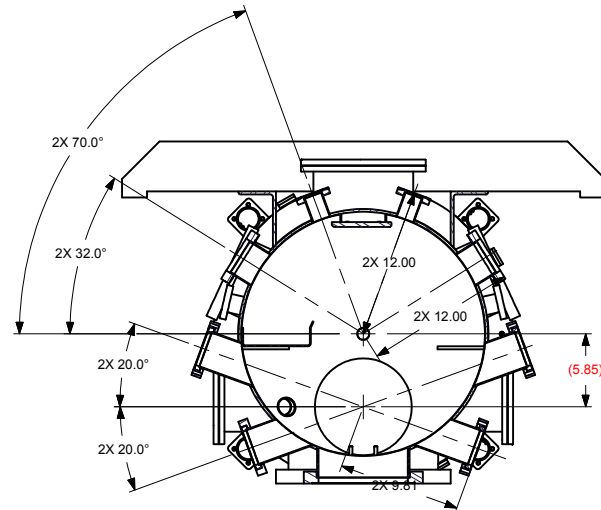
SECTION F-F



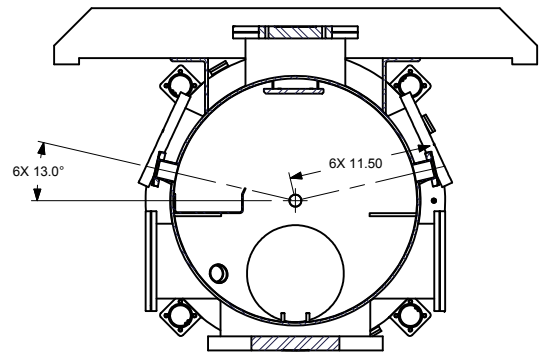
SECTION B-B




SECTION C-C



SECTION D-D



SECTION E-E

<small>The information disclosed on this drawing was originated and is the property of MKS, Inc. MKS Products, MKS reserves all design, patent, proprietary, use, sale, manufacturing, and reproduction rights thereto. The information may not be disclosed to third parties without the written approval of MKS, Inc. MKS Products, 5330 Sterling Dr., Boulder, CO 80301, USA.</small>		ORIGINATOR	10/21/2008	SCALE	NTS
		ENGINEER	M CROWLEY	REVISION	ENGINEER
		DRAWER	M CROWLEY	PROJECT	
		CHMB,NREL# 1700-11-00			
SHEET 3		DRAWING SIZE D		99K1154	
				A	