

Fittings and Flanges



Product Summary	198
NW fittings	199
ISO fittings	211
CF Flange Fittings	218
Cord and Tubing	226
Oils, Fluids, Sealants and Greases	227
Vapour Pump Fluids	231
Greases and Waxes	234

Flange Fittings



- Fast availability from responsive local supply centers
- Edwards worldwide support
- International ISO, Pneurop and British Standards
- Complete range for all common sizes in aluminium and stainless steel
- Stainless fittings made in 316L for highest corrosion resistance
- Precision material control ensures low outgassing and dependable vacuum performance

When you buy flange fittings from Edwards, you can expect the service that only a leading international supplier can offer you. Whether you are an OEM (needing scheduled deliveries of component kits for series production) or a unique system builder, you can rely on your local supplier to meet all your requirements.

70 Years of Vacuum Experience

From our experience in vacuum technology we enjoy solving your vacuum problems. You can rely on our library of vacuum applications and let us advise you on the most cost effective solutions. Our trained engineers will resolve any problem you have in choosing the right product for your application or troubleshooting a product that's not doing what you expected.

Partnership with Edwards

Edwards offers complete vacuum solutions. With our wide range of pumping technologies and sophisticated distribution networks we can offer flexible supply partnerships to match your competitive needs and offer the best value for your budget.

The Edwards Advantage

One Source Shopping

- Simplifies administration and purchasing costs
- Creates more purchasing power
- Ensures total quality performance

Kitting

- All components supplied for system build in one kit
- Simplifies ordering
- Ensures no missing parts in production
- Easier administration
- Reduces inventory levels, stock costs and warehousing space
- Easier control of usage

Consignment Stocks

- Only pay for when used
- Stocks on your premises
- No delivery problems
- Stocks regularly replenished when used

Total Quality

- Accredited ISO9001 supplier
- Customer contracts performance measures

Vacuum Fittings in General

Edwards vacuum fittings are designed to be leak-tight in vacuum applications. However, they are not intended to provide full structural support. When designing vacuum systems, it is essential that consideration be given to the static and dynamic loads imposed on each connection. If necessary, additional mechanical support should be provided.

Regular inspection including leak-checking and, where appropriate, periodic replacement of components should be considered.

These accessories are primarily designed for vacuum applications however some will withstand a small over-pressure, which is indicated in the tables below where appropriate. For the purpose of the European Union's Pressure Equipment Directive (97/23/EC), these items are considered to be piping for Group 2 gases (i.e. gas mixtures which are not explosive, flammable, toxic or oxidising) and are manufactured according to sound engineering practice as defined within the Directive.

NW and ISO Flange Fittings

Choose the optimum material to match your application and budget. Aluminium is ideal for achieving dependable cost-effective performance down to 10^{-7} mbar. Edwards also offers 316L/DIN 1.4404 stainless steel fittings for rugged corrosion resistance in semiconductor processing and excellent repeatability in high vacuum applications. In addition, careful quality control of elastomer specifications ensures critical sealing materials deliver the low outgassing performance your vacuum system performance depends on. Edwards attention to detail on all specifications delivers fit-and-forget dependability for your vacuum equipment.

UHV ConFlat® Flange Fittings

Sealing Principle A copper seal is squeezed axially and radially between two CF flanges, where knife-edges force the copper to cold flow. This flow is severely limited by the vertical flange wall which generates high pressures and fills surface imperfections to give a leak tight joint. At high bakeout temperatures, the flange geometry maintains high internal pressures despite softening of the gasket. A radial groove extends right up to the sealing ring and provides for leak testing of the vacuum connection.

Materials Our range of CF flanges is manufactured from AISI 304 stainless steel, which offers optimum performance at an affordable cost. Stainless steel 304 is used for the majority of UHV applications where a bakeout temperature of up to 450 °C is needed. AISI 316LN stainless steel is recommended for special applications where a harder material, higher bakeout temperature and much lower magnetic permeability are needed: these fittings are available on special order terms.

Dimensions Edwards CF flanges are manufactured to international standards and are compatible with all leading manufacturers. Metric flanges common in Europe and Asia use metric tapped holes and bored holes in flanges suitable for metric tubing. Flanges specified in inches, more commonly used in the USA, use UNF tapped flange threads and bored holes compatible with inch sized tube. Edwards offers both options.

CF Flange Names There are many descriptions used to describe the same flange sizes. Use the table below to cross-reference between common names.

CF Flange Name Equivalents				Flange OD	
				mm	inch
DN16CF	NW16	CF34	NW16CF	1½ inch	34.00 1.33
DN25CF			NW25CF	2¼ inch	53.60 2.11
DN40CF	NW35	CF70	NW35CF	2¾ inch	70.00 2.73
DN50CF			NW50CF	3¾ inch	85.70 3.37
DN63CF	NW63	CF114	NW63CF	4½ inch	114.00 4.47
DN80CF			NW75CF	4¾ inch	117.35 4.62
DN100CF	NW100	CF150	NW100CF	6 inch	152.00 5.97
DN125CF			NW130CF	6¾ inch	171.45 6.75
DN160CF	NW150	CF200	NW150CF	8 inch	202.00 7.97
DN200CF	NW200	CF250	NW200CF	10 inch	253.00 9.97
DN250CF	NW250	CF300	NW250CF	12 inch	306.00 13.25

NW Polymer Clamping Rings



In addition to the traditional aluminium hinged clamp, Edwards also offers a range of coupling clamps manufactured from high technology polymer, offering important advantages for the vacuum system builder.

Compared to aluminium, the high flexural modulus and better strength-to-weight ratio has enabled Edwards to design and manufacture clamps which are lighter and more compact than existing aluminium products. The CX4 crystalline aryl polymer clamps can be used at temperatures up to 100 °C and are unaffected by most common solvents.

These clamps are competitively priced and the high quality finish will enhance the appearance of any vacuum system. The range is available in swing and quick release hinged versions covering the following flange sizes: NW10/16, 20/25, 25/32, 32/40 and 50. With Edwards Co-Seals, swing clamps are suitable for use in the pressure range 10⁻⁷ mbar to 10 bar. Electrical continuity across the clamps is achieved by built-in earth strips.

Co-Seal

The introduction of our Co-Seal represented a major advance in the method of sealing NW and ISO flange connections. Discerning users appreciate the benefits of a seal design which eliminates crevices and trapped volumes. Our NW Co-Seals with polymer carriers offer a more economical seal with even wider appeal.

A Co-Seal has a split outer ring, or carrier, which retains a moulded elastomer sealing ring. When fitted, the inner face of the Co-Seal is directly exposed to the vacuum system, eliminating any crevices or trapped volumes which can generate gas bursts and inhibit pump-down. Unlike the regular centring-ring and O-ring, the NW Co-Seal is fully restrained externally and is therefore suitable from 10⁻⁷ mbar to 10 bar. Available with either nitrile or fluoroelastomer seals.

For ISO bolted flanges, cut-outs around the external circumference of the Co-Seal are positioned so that the securing bolts centralise the Co-Seal precisely. For ISO collar flanges, claw clamps also centralise the seal and are themselves spaced around the flange by the cut-outs in the Co-Seal.

Centring Rings in High Technology Polymer

We complement our aluminium centring-rings with a range manufactured from a high-tech polymer. These centring-rings have a unique slotted design which prevents gas bursts. The CX2 polymer can be used at temperatures up to 100 °C and is unaffected by most common solvents. The material has an outgassing rate of 6.6 × 10⁻⁸ mbar l s⁻¹ cm⁻² which makes it suitable for use in most vacuum systems, whilst giving additional benefits in terms of lower weight and cost.

Technical Data

Physical Data

Operating pressure range (absolute)	
C clamp and centring-ring	10 ⁻⁷ mbar – 1 bar / 14.5 psi
Stainless steel clamping ring and Co-Seal	10 ⁻⁷ mbar – 10 bar / 145 psi
Stainless steel clamp and metal seal	10 ⁻⁸ mbar – 3 bar / 44 psi
Stainless steel clamp and Co-Seal (all sizes)	10 ⁻⁷ mbar – 10 bar / 145 psi
Polymer and aluminium clamps and Co-Seal	
NW10 to NW25	10 ⁻⁷ mbar – 10 bar / 145 psi
NW40 to NW50	10 ⁻⁷ mbar – 10 bar / 145 psi
NW trapped O-ring	10 ⁻⁷ mbar – 10 bar / 145 psi
O-ring and centring-ring (vacuum use only)	10 ⁻⁷ mbar – 1 bar / 14.5 psi
Bellows	10 ⁻⁷ mbar – 1 bar / 14.5 psi
Flexible pipelines*	10 ⁻⁷ mbar – 1.5 bar / 21 psi
Braided flexible pipelines*	10 ⁻⁷ mbar – 10 bar / 145 psi

* Depends on size

Operating Temperature

The maximum temperature for continuous operation with fluoroelastomer is 150 °C. It may be intermittently baked to 200 °C.

Polymer Co-Seal	-10 to 80 °C
Aluminium Co-Seal and nitrile seal	-10 to 100 °C
Aluminium Co-Seal and fluoroelastomer seal	-10 to 200 °C
Polymer centring-ring and nitrile O-ring	-10 to 100 °C
Polymer centring-ring and fluoroelastomer seal	-10 to 125 °C
Nitrile O-ring	-10 to 100 °C
Fluoroelastomer O-ring	-10 to 200 °C
Polymer clamp	
Constant vacuum use	-10 to 100 °C
Intermittent vacuum use	-10 to 125 °C
Stainless steel clamping ring	-10 to 125 °C
Aluminium clamping ring	-10 to 200 °C
Stainless steel clamp	-10 to 200 °C

Standards compliance

NW and ISO fittings	Pneurop 6606 (1981), ISO1609 (1986) DIN28403, DIN28404
CF fittings	ISO3669

Stainless steel equivalents

AISI Number	German Steel Number	DIN Standard
304	1.4301	X5 CrNi 18 10
303	1.4305	X10 CrNi 5 18 9
304L	1.4306	X2 CrNi 19 10
301	1.4310	X12 CrNi 17 7
316	1.4401	X5 CrNiMo 18 10
316L	1.4404	X2 CrNiMo 17 13 2
316Ti	1.4571	X6 CrNiMoTi 17 12 2
321	1.4541	X10 CrNiTi 18 9

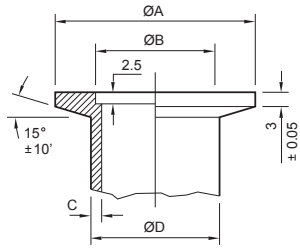
Chemical Resistance

This information is provided as a general guide only. Further guidance should be sought with respect to specific chemicals and their applications

Material	Generally Resistant To	Generally Attacked By
Nitrile		
Butadiene Acrylonitrile copolymer	Many hydrocarbons fats, oils greases, hydraulic fluids	Ozone, ketones, esters, aldehydes, chlorinated and nitro hydrocarbons
Neoprene		
Chloroprene polymer	Moderate chemicals and acids, ozone, oily fats, greases, many oils and solvents	Strong oxidizing acids and esters, ketones, chlorinated aromatic and nitro hydrocarbons
Fluoroelastomer		
Fluorocarbon polymer	All aliphatic, aromatic and halogenated hydrocarbons, acids, animal and vegetable fats	Ketones, low molecular weight esters and nitro containing compounds
Aluminium		
	Organic acids, fatty acids, freons, nitric acid	Strong acids, alkalis chlorinated solvents, mercury
Stainless steel		
	Organic acids, alkalis, nitric acid. Sulphuric acid (10%)	Oxidizing chlorines, some organic acids, hydrochloric acid, hydrofluoric acid
Polymer		
Liquid crystal polymer	Organic acids, glycols, chlorinated solvents, ketones, mineral and oxidising acids, caustic solutions freons	Sodium hydroxide, sulphuric acid (70%)

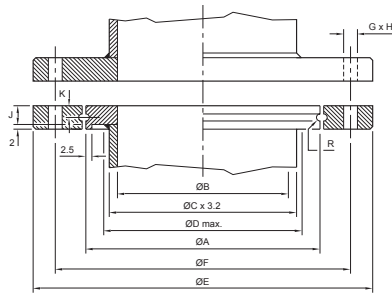
Dimensions

NW Dimensions



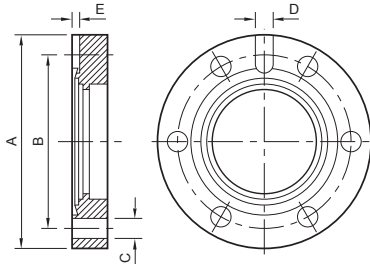
	A	B	C	D
NW10	30	12.2	2	14
NW16	30	17.2	2	20
NW20	40	22.2	2	25
NW25	40	26.2	2	28
NW32	55	34.2	2	38
NW40	55	41.2	2	44.5
NW50	75	52.2	2	57

ISO-K, ISO-F Dimensions



	A	B	C	D	E	F	G	H	J	K	R
ISO63	95	70	76.1	80	130	110	9	4	10	5	1.5
ISO80	110	83	88.9	95	145	125	9	8	10	5	1.5
ISO100	130	102	114.3	115	165	145	9	8	10	5	1.5
ISO160	180	153	160.3	165	225	200	11	8	10	5	2.5
ISO200	240	213	219	225	285	260	11	12	10	5	2.5
ISO250	290	261	273	275	335	310	11	12	10	5	2.5
ISO320	370	318	324	355	425	395	14	12	15	7.5	2.5
ISO400	450	400	406	435	510	480	14	16	15	7.5	4
ISO500	550	501	508	535	610	580	14	16	15	7.5	4
ISO630	690	630	660	660	750	720	14	20	20	10	5

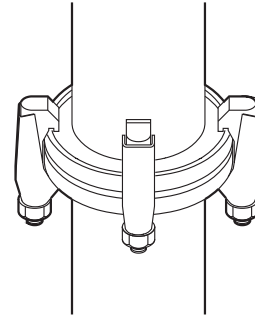
CF dimensions



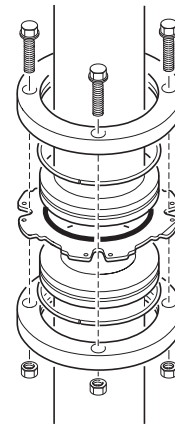
Nominal	A, mm	A, inch	B	C	D	E	Bolt Holes
DN16CF	34	1 1/8	27	4.4	-	-	6
DN40CF	70	2 3/4	58.7	6.6	-	-	6
DN63CF	114	4 1/2	92.1	8.4	6	3	8
DN100CF	152	6	130.2	8.4	6	3	16
DN160CF	202	8	181	8.4	6	3	20
DN200CF	253	10	231.8	8.4	6	3	24
DN250CF	306	12	284	8.4	6	3	32

ISO Flange Assembly with Co-Seals

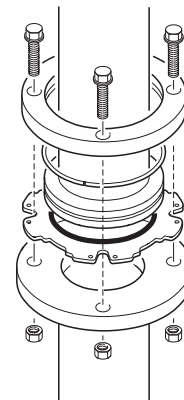
Two Fixed Collar Flanges with Claw Clamps



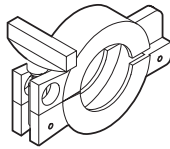
Two Rotatable Flanges



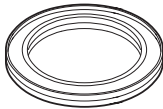
One Fixed Collar Flange, with One Rotatable Flange



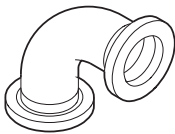
Product Summary



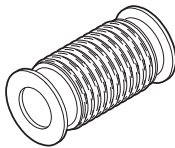
Description	Semiconductor	Scientific	R & D	Industrial	Features	Page		
						NW	ISO	CF
Clamps								
Clamping Ring	-	✓	✓	✓	Low cost, compact Stainless steel	6-7	-	-
Polymer Clamp	-	✓	✓	✓	Low cost, lightweight Neat appearance	6-7	-	-
Aluminium Clamp	✓	✓	✓	✓	Rugged Pneurop standard Competitive price	6-7	-	-
Metal Clamp	-	✓	✓	-	Suitable for aluminium and indium seals Wide temperature range	6-7	-	-
Claw Clamps and Bolts	✓	✓	✓	✓	Wide range optimised for many applications High strength CF bolts for UHV flanges	6-8	6-19	6-32



Seals								
Polymer Centring Ring	-	✓	✓	✓	Low cost Gas vents – no gas bursts Resistant to solvents	6-8	-	-
Trapped O-Rings	✓	✓	✓	✓	No gas bursts	6-10	6-20	-
Polymer Co-Seal	-	✓	✓	✓	No gas bursts Suitable for up to 10 bar	6-9	6-20	-
Metal Centring Ring	✓	✓	✓	✓	Stainless steel and aluminium carrier Pneurop standard Fluoroelastomer and nitrile versions	6-8	6-21	-
Metal Seal	-	✓	✓	-	Aluminium all metal seals Copper gaskets for UHV seals	6-9	-	6-31

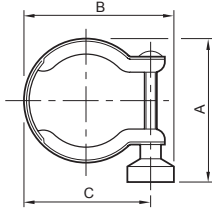


Pipeline Components								
Aluminium	-	✓	✓	✓	NW10 to NW50 components	6-10	6-22	-
Stainless Steel	✓	✓	✓	✓	NW10 to NW50 components NW and ISO fittings in 316L for corrosion resistance CF fittings in 304L for cost effectiveness	6-10	6-22	6-28

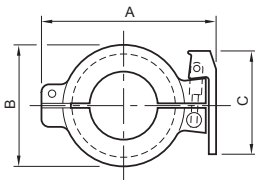


Bellows and Flexible Pipelines								
Bellows	✓	✓	✓	✓	NW and ISO fittings in 316L, CF fittings in 304L Suitable for minimising transfer of vibration from pump to vacuum systems	6-17	6-25	6-31
Flexible Pipelines	-	✓	✓	✓	Use to simplify connection of two components or correct misalignment Use braided versions for positive pressure applications (like dry pump exhausts)	6-17	6-25	-

NW fittings

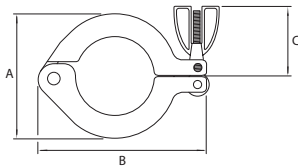


Size	A	B	C	D	E	F	Ordering Number
Clamping Ring							
Stainless steel							
NW10/16	44	46	34				C10512401
NW20/25	60	60	48				C10514401
NW32/40	73	75	63				C10516401
NW50	90	96	84				C10517401

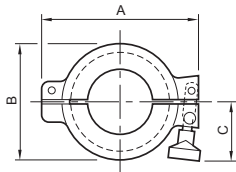


Hinged Clamp							
aluminium							
NW10/16	68	40	57				C10512402
NW20/25	80	50	57				C10514402
NW32/40	95	66	57				C10516402

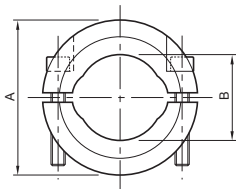
Polymer							
NW10/16	68	40	57				C10512303
NW20/25	80	50	57				C10514303
NW32/40	95	66	57				C10516303
NW50	125	86	57				C10517303



Swing Clamp							
aluminium							
NW10/16	62	40	35				C10512403
NW20/25	75	50	35				C10514403
NW32/40	90	66	35				C10516403
NW50	120	86	35				C10517403

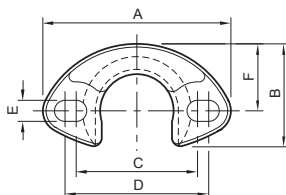


Polymer							
NW10/16	62	40	35				C10512304
NW20/25	75	50	35				C10514304
NW32/40	90	66	35				C10516304
NW50	120	86	35				C10517304



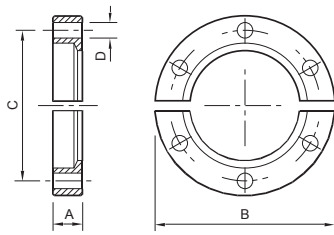
Clamp (Metal Seals)							
Stainless steel							
NW10/16	54	22					C10512404
NW20/25	64	32					C10514404
NW32/40	82	47					C10516404
NW50	112	62					C10517404

We recommend the use of thread lubricant, 1764 00030.



Stainless steel; † Non slotted

"C" Clamp							
Nickel plated brass including screw pack							
NW10/16	59	35	38	45	6.3	22	C11002340
NW25	70	44	54	54 [†]	8.3	25.4	C11004340
NW40*	100	73.5	79	81	8.3	50	C11005340



Size	A	B	C	D	E	F	Ordering Number
------	---	---	---	---	---	---	-----------------

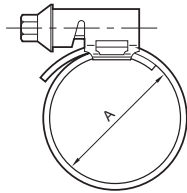
Bulkhead Clamp

aluminium

Europe N. America

NW10/16	9.2	50.8	38.1	5.1			C10512007 C90512007
NW25	9.8	60.3	48.0	5.1			C10514007 C90514007
NW40	9.3	74.6	62.0	5.1			C10516007 C90516007
NW50	10.3	95.2	83.0	5.1			C10517007 C90517007

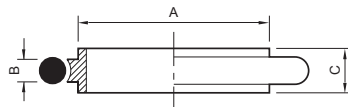
All sizes supplied with
6 x 10-32 UNF x 5/8" hex head stainless steel bolts
6 x 10-32 UNF stainless steel plain washers



PVC Hose Clamp

Stainless steel

NW10/16	25						C10512408
NW25	36						C10514408
NW40	50						C10516408
NW50	60						C10517408



Centring Ring with O-Ring

Fluoroelastomer/stainless steel carrier

NW10	12	3.9	8				C10511395
NW16	17	3.9	8				C10512395
NW25	26	3.9	8				C10514395
NW40	41	3.9	8				C10516395
NW50	52	3.9	8				C10517395

Fluoroelastomer/aluminium carrier

NW10	12	3.9	8				C10511397
NW16	17	3.9	8				C10512397
NW25	26	3.9	8				C10514397
NW40	41	3.9	8				C10516397

Fluoroelastomer/polymer carrier

NW10	12	3.9	8				C10511394
NW16	17	3.9	8				C10512394
NW25	26	3.9	8				C10514394
NW40	41	3.9	8				C10516394

Nitrile/stainless steel carrier

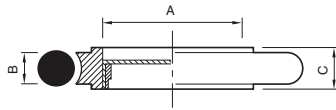
NW10	12	3.9	8				C10511396
NW16	17	3.9	8				C10512396
NW25	26	3.9	8				C10514396
NW40	41	3.9	8				C10516396
NW50	52	3.9	8				C10517396

Nitrile/aluminium carrier

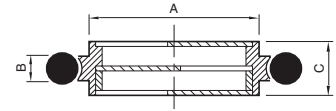
NW10	12	3.9	8				C10511398
NW16	17	3.9	8				C10512398
NW25	26	3.9	8				C10514398
NW40	41	3.9	8				C10516398

Nitrile/polymer carrier

NW10	12	3.9	8				C10511393
NW16	17	3.9	8				C10512393
NW25	26	3.9	8				C10514393
NW40	41	3.9	8				C10516393



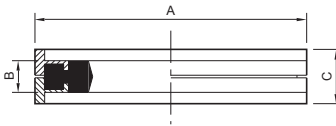
Size	A	B	C	D	E	F	Ordering Number
Centring Ring with Screen							
Fluoroelastomer/stainless steel AISI 316L DIN 1.4404 Stainless Steel wire Ø0.5 Aperture size 1 mm ²							
NW16	9.5	3.9	8				C10512085
NW25	19.5	3.9	8				C10514085
NW40	32	3.9	8				C10516085
NW50	43	3.9	8				C10517085



Centring Ring with Optical Baffle							
Fluoroelastomer/stainless steel AISI 304L DIN 1.4301							
NW25	26	3.9	8.5				D02110000

Centring Ring Sintered Filter

NW10							D02158020
NW40							D15405110



Co-Seal							
Nitrile/aluminium carrier							
NW10/16	32	3.9	7				B27158480
NW20/25	42	3.9	7				B27158490
NW32/40	57	3.9	7				B27158500

Nitrile/polymer carrier

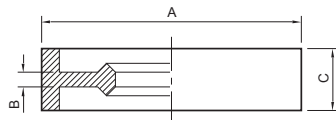
NW10/16	32	3.9	7				B27158426
NW20/25	42	3.9	7				B27158447
NW32/40	57	3.9	7				B27158454
NW50	77.5	3.9	7				B27158467

Fluoroelastomer/aluminium carrier

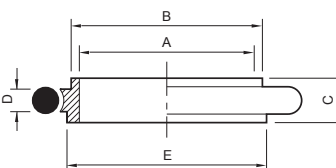
NW10/16	32	3.9	7				B27158481
NW20/25	42	3.9	7				B27158491
NW32/40	57	3.9	7				B27158501

Fluoroelastomer/polymer carrier

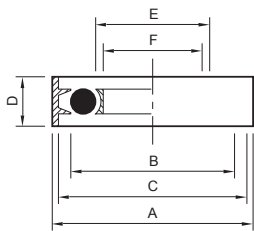
NW10/16	32	3.9	7				B27158427
NW20/25	42	3.9	7				B27158448
NW32/40	57	3.9	7				B27158453
NW50	77.5	3.9	7				B27158466



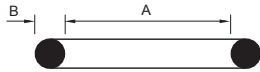
Metal Seals							
aluminium							
Use with clamps (metal seals) C105-XX-404.							
NW10/16	32	2.0	7				C27159004
NW20/25	42	2.0	7				C27159005
NW32/40	57	2.0	7				C27159006
NW50	77	2.0	7				C27159007



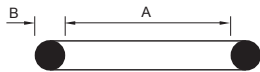
Adapting Centring Ring with O-Ring							
Nitrile							
NW10/16 stainless steel	10	12	8	3.9	17		C10512346
NW10/16 polymer	10	12	8	3.9	17		C10512349
Fluoroelastomer							
NW10/16 stainless steel	10	12	8	3.9	17		C10512345
NW10/16 polymer	10	12	8	3.9	17		C10512350



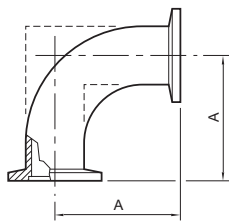
Size	A	B	C	D	E	F	Ordering Number
NW Trapped O-Ring							
Fluoroelastomer/stainless steel/aluminium							
NW10/16	32.5	27.5	30.2	7	18.5	16	C10512490
NW25	42.5	37.5	40.2	7	28.5	25	C10514490
NW40	57.5	52.0	55.2	7	43	40	C10516490
NW50	77.5	64.5	75.2	7	55.5	50	C10517490



O-Ring (Pack of 10)							
Nitrile							
NW10	15	5					H02124012
NW16	18	5					H02124013
NW25	28	5					H02124015
NW40	42	5					H02124017
NW50	50	5					H02124018

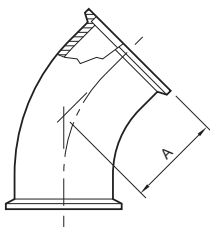


O-Ring (Pack of 5)							
Fluoroelastomer							
NW10	15	5					H02124032
NW16	18	5					H02124033
NW25	28	5					H02124035
NW40	42	5					H02124037
NW50	50	5					H02124038

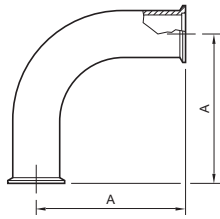


▲ Dimensions shown dotted in diagram

Elbow 90°							
aluminium BS LM25 DIN 3.2371 ▲							
NW10	30						C10511410
NW16	40						C10512410
NW25	50						C10514410
NW40	65						C10516410
Stainless Steel AISI 316L DIN 1.4404							
NW10	30						C10511420
NW16	40						C10512420
NW25	50						C10514420
NW40	65						C10516420
NW50	70						C10517420



Elbow 45°							
Stainless Steel AISI 316L DIN 1.4404							
NW16	23.2						C10512405
NW25	28.5						C10514405
NW40	42.7						C10516405
NW50	50.6						C10517405

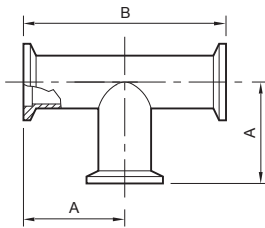


Size	A	B	C	D	E	F	Ordering Number
------	---	---	---	---	---	---	-----------------

Long Radius Elbow

Stainless Steel AISI 316L DIN 1.4404

NW40	130						C10516406
NW50	140						C10517406



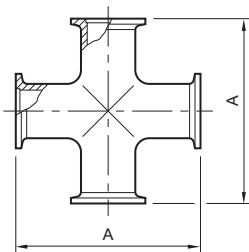
T-Piece

aluminium BS LM25 DIN 3.2371

NW10	30	60					C10511411
NW16	40	80					C10512411
NW25	50	100					C10514411
NW40	65	130					C10516411

Stainless Steel AISI 316L DIN 1.4404

NW10	30	60					C10511421
NW16	40	80					C10512421
NW25	50	100					C10514421
NW40	65	130					C10516421
NW50	70	140					C10517421



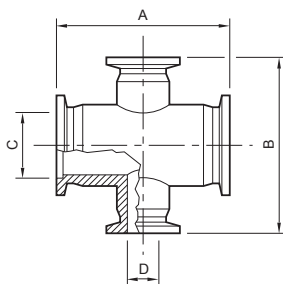
Cross Piece

aluminium BS LM25 DIN 3.2371

NW10	60						C10511412
NW16	80						C10512412
NW25	100						C10514412
NW40	130						C10516412

Stainless Steel AISI 316L DIN 1.4404

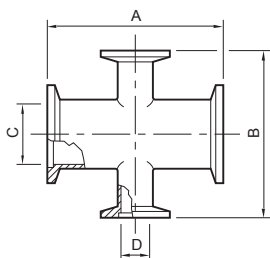
NW10	60						C10511422
NW16	80						C10512422
NW25	100						C10514422
NW40	130						C10516422
NW50	140						C10517422



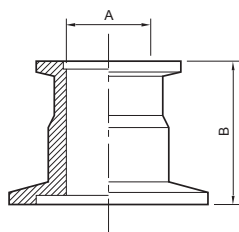
Reducing Cross

aluminium ISO 6082 DIN 3.2315

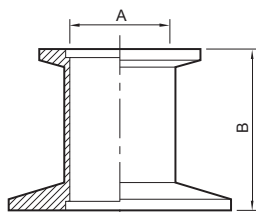
NW25/10	70	70	26.2	12.2			C10514413
NW40/10	80	90	41.2	12.2			C10516413



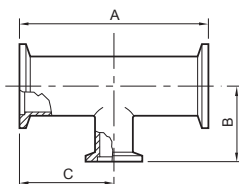
Size	A	B	C	D	E	F	Ordering Number
Reducing Cross							
Stainless Steel AISI 316L DIN 1.4404							
NW25/10	70	70	26.2	12.2			C10514423
NW25/16	100	80	26.2	17.2			C10514424
NW40/16	130	80	41.2	17.2			C10516424
NW40/25	130	100	41.2	26.2			C10516425
NW50/25	140	100	52.2	26.2			C10517425



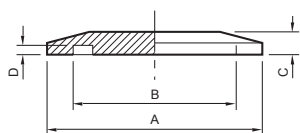
Size	A	B	Ordering Number
Reducing Piece			
aluminium ISO 6082 DIN 3.2315			
NW25/10	10	40	C10514436
NW25/16	16	40	C10514437
NW40/25	24	40	C10516439
NW40/16	16	40	C10516438
NW50/16	16	40	C10517040
NW50/25	24	40	C10517043
NW50/40	41	40	C10517041



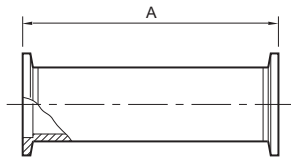
Size	A	B	Ordering Number
Reducing Piece			
Stainless Steel AISI 316L DIN 1.4404			
NW25/10	10	40	C10514446
NW25/16	16	28	C10514447
NW40/16	16	28	C10516448
NW40/25	24	28	C10516449
NW50/16	16	28	C10517450
NW50/25	24	40	C10517051
NW50/40	40	28	C10517452



Size	A	B	C	Ordering Number
Reducing T-Piece				
Stainless Steel AISI 316L DIN 1.4404				
NW25/16	100	40	50	C10514427
NW40/16	130	40	65	C10516428
NW40/25	130	50	65	C10516429
NW50/16	140	50	70	C10517430
NW50/25	140	65	70	C10517431

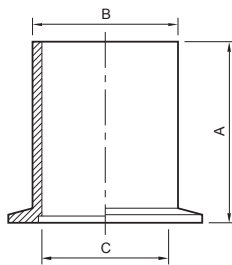


Size	A	B	C	D	Ordering Number
Blanking Flange					
aluminium BS LM 25 DIN 3.2371					
NW10	30	12.2	6	2.5	C10511368
NW16	30	17.2	6	2.5	C10512368
NW25	40	26.2	6	2.5	C10514368
NW40	55	41.2	6	2.5	C10516368
Stainless Steel AISI 316L DIN 1.4404					
NW10	30	12.2	6	2.5	C10511366
NW16	30	17.2	6	2.5	C10512366
NW25	40	26.2	6	2.5	C10514366
NW40	55	41.2	6	2.5	C10516366
NW50	75	52.2	6	2.5	C10517366



Size	A	B	C	D	E	F	Ordering Number
Full Nipple							
aluminium BS LM 25 DIN 3.2371							
NW10	60						C10511409
NW16	80						C10512409
NW25	100						C10514409
NW40	130						C10516409

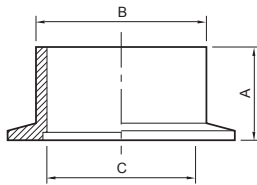
Stainless Steel AISI 316L DIN 1.4404							
NW10	60						C10511433
NW16	80						C10512433
NW25	100						C10514433
NW40	130						C10516433
NW50	140						C10517433



For inch tube: D= tube OD

Size	A	B	C	D	E	F	Ordering Number
Long Flange Weld Stub							
Stainless Steel AISI 316L DIN 1.4404							
For metric tube							
NW10	70	15	10				C10511316
NW16	70	20	16				C10512316
NW25	70	28	24				C10514316
NW40	70	44.5	41				C10516616
NW50	70	57	51				C10517316

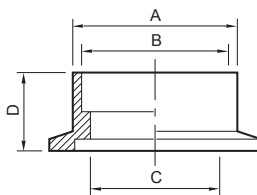
For inch tube							
NW10	40	12.7	9.3	1/2			C10504080
NW16	40	19.1	15.7	3/4			C10504101
NW25	40	25.4	22	1			C10504223
NW40	40	38.1	34.7	1 1/2			C10504324
NW50	40	50.8	47.4	2			C10504351



For inch tube: D= tube OD

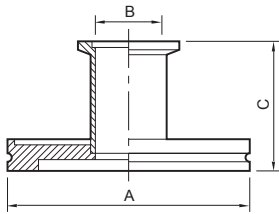
Size	A	B	C	D	E	F	Ordering Number
Short Flange Weld Stub							
Stainless Steel AISI 316L DIN 1.4404							
For metric tube							
NW10	30	15	10				C10511311
NW16	30	20	16				C10512311
NW25	30	28	24				C10514311
NW40	30	44.5	41				C10516611
NW50	30	57	51				C10517311

For inch tube							
NW10	12.7	12.7	9.3	1/2			C10504079
NW16	12.7	19.1	15.7	3/4			C10504100
NW25	12.7	25.4	22	1			C10504222
NW40	19.1	38.1	34.7	1 1/2			C10504323
NW50	19.1	50.8	47.4	2			C10504350

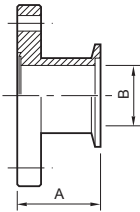


E= tube OD, mm
F= tube OD, inches

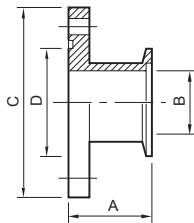
Size	A	B	C	D	E	F	Ordering Number
Weld Socket Flange for Inch Tube							
Stainless Steel AISI 316L DIN 1.4404							
NW16	15.5	13	11.4	12.7	12.7	1/2	C10504102
NW16	22.1	19.3	17.3	12.7	19.1	3/4	C10504103
NW25	28.6	25.9	22.1	12.7	25.4	1	C10504224
NW40	44.5	38.6	34.9	12.7	38.1	1 1/2	C10504325
NW50	57.2	51.3	47.5	12.7	50.8	2	C10504353



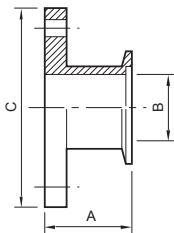
Size	A	B	C	D	E	F	Ordering Number
Adaptor NW/ISO							
Stainless Steel AISI 316L DIN 1.4404							
NW25/ISO63	95	25	50				C10007115
NW40/ISO63	95	40	50				C10007116
NW40/ISO80	110	40	118				C10008002
NW40/ISO100	130	40	50				C10009122
NW50/ISO63	95	50	50				C10007118
NW50/ISO80	110	50	118				C10008003
NW50/ISO100	130	50	50				C10009123



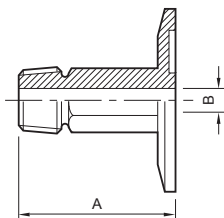
Adaptor NW/CF							
Stainless Steel AISI 316L DIN 1.4404							
NW16/DN16CF/1½	52.7	15.8					C10503104
NW16/DN40CF/2¾	45.3	15.8					C10503105
NW25/DN40CF/2¾	45.3	22					C10503207
NW40/DN40CF/2¾	45.3	40					C10503305
NW50/DN63CF/4½	49.5	50					C10503405



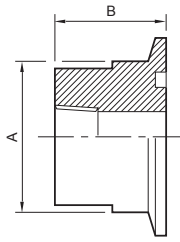
Adaptor NW/ASA with O-Ring Groove							
Stainless Steel AISI 316L DIN 1.4404							
NW40/2 inch ASA	46	40	152	86.9			C10503310
NW40/3 inch ASA	46	40	190	118			C10503311
NW50/2 inch ASA	46	50	152	86.9			C10503410



Adaptor NW/ASA without O-Ring Groove							
Stainless Steel AISI 316L DIN 1.4404							
NW40/1½ inch ASA	46	40	127				C10503303
NW40/2 inch ASA	46	40	152				C10503300
NW50/2 inch ASA	46	50	152				C10503400

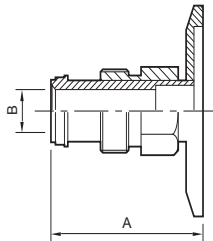


Adaptor NW/NPT Threaded Pipe Male							
Stainless Steel AISI 316L DIN 1.4404							
NW16/¼ inch NPT male	40	4.7					C10501102
NW16/¼ inch NPT male	50	7.1					C10501103
NW25/¼ inch NPT male	40	4.7					C10501217
NW25/¼ inch NPT male	50	7.1					C10501218
NW25/½ inch NPT male	75	11.9					C10501219
NW25/¾ inch NPT male	75	15.9					C10501220
NW40/¼ inch NPT male	50	7.1					C10501303
NW40/½ inch NPT male	75	11.9					C10501304
NW40/¾ inch NPT male	75	15.9					C10501305
NW40/1 inch NPT male	75	22.2					C10501306
NW50/½ inch NPT male	75	11.9					C10501501
NW50/1 inch NPT male	75	22.2					C10501503

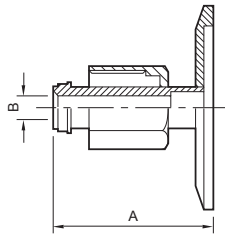


Size	A	B	C	D	E	F	Ordering Number
Adaptor NW/NPT Threaded Pipe Female							
aluminium ISO 6082 DIN 3.2315							
NW10 ¹ / ₈ inch NPT female	15.8	19.1					C10501070
NW16 ¹ / ₈ inch NPT female	15.8	19.1					C10501104
NW25 ¹ / ₈ inch NPT female	22.4	19.1					C10501221
NW40 ¹ / ₈ inch NPT female	31.8	25.4					C10501307
NW10 ¹ / ₄ inch NPT female	15.8	19.1					C10501071
NW16 ¹ / ₄ inch NPT female	15.8	19.1					C10501105
NW25 ¹ / ₄ inch NPT female	22.4	19.1					C10501222
NW40 ¹ / ₄ inch NPT female	31.8	25.4					C10501308

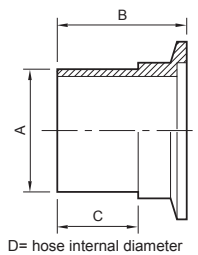
Stainless Steel AISI 316L DIN 1.4404							
NW10 ¹ / ₈ inch NPT female	15.8	19.1					C10501072
NW16 ¹ / ₈ inch NPT female	15.8	19.1					C10501106
NW25 ¹ / ₈ inch NPT female	22.4	19.1					C10501223
NW40 ¹ / ₈ inch NPT female	31.8	25.4					C10501309
NW10 ¹ / ₄ inch NPT female	15.8	19.1					C10501073
NW16 ¹ / ₄ inch NPT female	15.8	19.1					C10501107
NW25 ¹ / ₄ inch NPT female	22.4	19.1					C10501224
NW40 ¹ / ₄ inch NPT female	31.8	25.4					C10501310



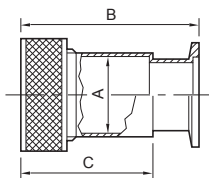
Adaptor NW/VCR Male							
Stainless Steel AISI 316L DIN 1.4404							
NW16 ¹ / ₄ inch VCR male	35.6	4.8					C10501108
NW16 ¹ / ₂ inch VCR male	41.4	10.4					C10501110
NW25 ¹ / ₄ inch VCR male	35.6	4.8					C10501225
NW25 ¹ / ₂ inch VCR male	40.6	10.4					C10501227
NW40 ¹ / ₄ inch VCR male	35.6	4.8					C10501311
NW40 ¹ / ₂ inch VCR male	40.6	10.4					C10501313
NW50 ¹ / ₄ inch VCR male	35.6	4.8					C10501508



Adaptor NW/VCR Female							
Stainless Steel AISI 316L DIN 1.4404							
NW16 ¹ / ₄ inch VCR female	35.6	4.8					C10501109
NW16 ¹ / ₂ inch VCR female	41.4	10.4					C10501111
NW25 ¹ / ₄ inch VCR female	35.6	4.8					C10501226
NW25 ¹ / ₂ inch VCR female	40.6	10.4					C10501228
NW25 ³ / ₄ inch VCR female	54.4	15.7					C10501230
NW40 ¹ / ₄ inch VCR female	35.6	4.8					C10501312
NW40 ¹ / ₂ inch VCR female	40.6	10.4					C10501314

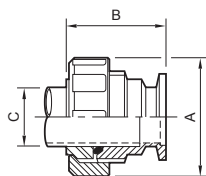


Adaptor PVC Hose							
Stainless Steel AISI 316L DIN 1.4404							
NW10 ¹ / ₂ inch hose	12.7	32	20	12.7			C10504081
NW16 ¹ / ₂ inch hose	12.7	32	20	12.7			C10504104
NW16 ³ / ₄ inch hose	19.1	32	20	19.1			C10504105
NW25/1 inch hose	25.4	38.1	26	25.4			C10504225
NW40/1 ¹ / ₂ inch hose	38.1	50	38.1	38.1			C10504326
NW50/2 inch hose	47.4	55	41	50.8			C10504352

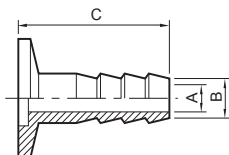


D= tube od in mm
E= tube OD in inches

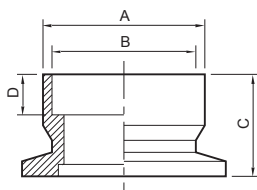
Size	A	B	C	D	E	F	Ordering Number
Gauge Tube Adaptor and Compression O-Ring							
Stainless Steel AISI 316L DIN 1.4404 Fluoroelastomer O-ring							
NW10	13.1	50	33	12.7	½		C10502001
NW16	6.7	32	–	6.4	¼		C10502101
NW16	13.1	50	33	12.7	½		C10502102
NW16	19.4	56	40	19.1	¾		C10502103
NW25	13.1	50	33	12.7	½		C10502201
NW25	19.4	58	40	19.1	¾		C10502202
NW25	25.8	62	46	25.4	1		C10502203
NW40	13.1	58	33	12.7	½		C10502300
NW40	19.4	63.5	40	19.1	¾		C10502301
NW40	25.8	71	46	25.4	1		C10502302
NW40	29	74	49	28.6	1¼		C10502303
NW40	38.4	84	63.5	38.1	1½		C10502304
NW50	19.4	63.5	40	19.1	¾		C10502400
NW50	25.8	71	46	25.4	1		C10502401
NW50	51.1	87	66	50.8	2		C10502404



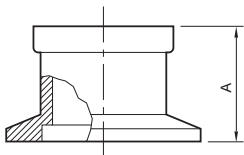
Compression Fitting							
aluminium							
NW10	44	43	14/15				C10520050



Nozzle							
aluminium ISO 6082 DIN 3.2315							
NW10	7	12	40				C10511645
NW25	7	12	40				C10514645
NW40	7	12	40				C10516645

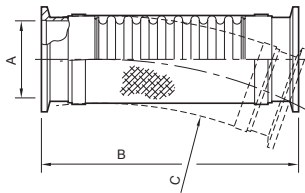


Coupling Body							
Brass							
NW10	18	15.2	13	6			C10511328
NW25	32	28.2	20	8			C10514328
NW40	46	42.2	18	8			C10516628



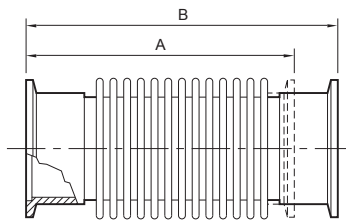
Temperature range -40 to 380 °C
Temperature gradient <3 °C min⁻¹

NW Optical Viewpoint							
Body: Stainless Steel AISI 316L DIN 1.4404; Mounting: Nilo K; Glass: Borosilicate (8250 Schott)							
NW40	23.6						C10516407
NW50	31.8						C10517407



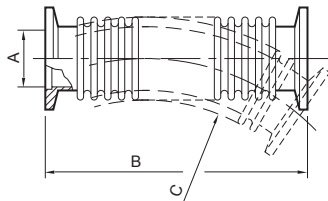
C= minimum bend radius, static
 D= minimum bend radius, dynamic
 E= maximum operating pressure, bar absolute

Size	A	B	C	D	E	F	Ordering Number
Braided Flexible Exhaust Pipeline							
Stainless Steel AISI 316L DIN 1.4404							
NW25	26.2	135	50	320	10.0		C10514294
NW40	41.2	135	80	400	10.0		C10516294
NW50	52.2	135	100	450	10.0		C10517294
NW25	26.2	250	50	320	10.0		C10514295
NW40	41.2	250	80	400	10.0		C10516295
NW50	52.2	250	100	450	10.0		C10517295
NW25	26.2	500	50	320	10.0		C10514296
NW40	41.2	500	80	400	10.0		C10516296
NW50	52.2	500	100	450	10.0		C10517296
NW25	26.2	1000	50	320	10.0		C10514297
NW40	41.2	1000	80	400	10.0		C10516297
NW50	52.2	1000	100	450	10.0		C10517297



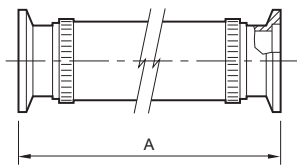
C= maximum operating pressure, bar absolute

Size	A	B	C	Ordering Number
Flexible Bellows				
Stainless Steel AISI 316L DIN 1.4404				
NW10	102	123	1.2	C10511670
NW16	102	123	1.2	C10512670
NW25	102	123	1.2	C10514670
NW40	102	123	1.2	C10516670
NW50	102	123	1.2	C10517670



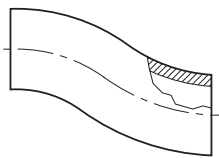
C= minimum bend radius, static
 D= minimum bend radius, dynamic
 E= maximum operating pressure, bar absolute

Size	A	B	C	D	E	Ordering Number
Flexible Pipelines						
Stainless Steel AISI 316L DIN 1.4404						
NW10	12.2	250	30	100	1.5	C10511285
NW16	17.2	250	30	130	1.5	C10512285
NW25	26.2	250	50	210	1.5	C10514285
NW40	41.2	250	80	260	1.5	C10516285
NW50	52.2	250	100	320	1.5	C10517285
NW10	12.2	500	30	100	1.5	C10511286
NW16	17.2	500	30	130	1.5	C10512286
NW25	26.2	500	50	210	1.5	C10514286
NW40	41.2	500	80	260	1.5	C10516286
NW50	52.2	500	100	320	1.5	C10517286
NW10	12.2	750	30	100	1.5	C10511300
NW16	17.2	750	30	130	1.5	C10512300
NW25	26.2	750	50	210	1.5	C10514300
NW40	41.2	750	80	260	1.5	C10516300
NW50	52.2	750	100	320	1.5	C10517300
NW10	12.2	1000	30	100	1.5	C10511287
NW16	17.2	1000	30	130	1.5	C10512287
NW25	26.2	1000	50	210	1.5	C10514287
NW40	41.2	1000	80	260	1.5	C10516287
NW50	52.2	1000	100	320	1.5	C10517287



Size	A	B	C	D	E	F	Ordering Number
Reinforced PVC Tube with NW Flanges and Hose Clamps							
Stainless Steel AISI 316L DIN 1.4404							
NW10	500						C10511055
NW16	500						C10512055
NW25	500						C10514055
NW40	500						C10516055
NW50	500						C10517055
NW10	1000						C10511155
NW16	1000						C10512155
NW25	1000						C10514155
NW40	1000						C10516155
NW50	1000						C10517155

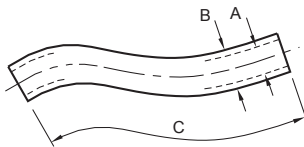
Maximum operating pressure 1 bar absolute, Temperature 5 to 60 °C



Reinforced PVC Tube, 1 metre

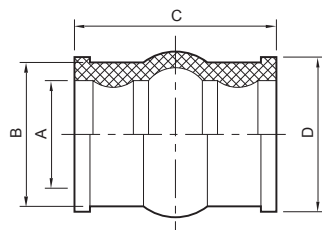
	Europe	N. America
½ inch ID tube	N/A	A63012220
¾ inch ID tube	H02100016	U30002173
1 inch ID tube	H02100017	A63012343
1½ inch ID tube	H02100018	U30000484
2 inch ID tube	H02100019	U30003837

Maximum operating pressure 1 bar absolute, Temperature 5 to 60 °C



Neoprene Rubber Tube

5 × 19 mm	5	19	1000	H02100002
7 × 17 mm	7	17	1000	H02100003
9 × 25 mm	9	25	1000	H02100004
12 × 28 mm	12	28	1000	H02100005
20 mm × 34 mm	20	34	1000	H02100006
Reinforced hose	25	32	305	C06600025

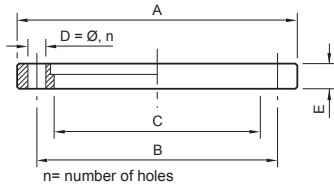


Moulded Sleeve

Neoprene

NW10	13	21	38	23	C26501002
NW25	27	36	55	38	C26501004

ISO fittings

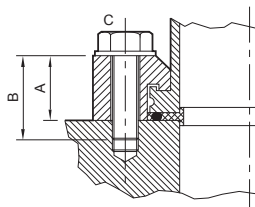


Size	A	B	C	D	E	F	Ordering Number
------	---	---	---	---	---	---	-----------------

Rotatable Flange with Fitting Kit

Mild steel nickel plated

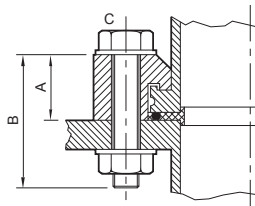
ISO63	130	110	95.5	Ø9,4	12		C10007010
ISO80	145	125	110	Ø9,8	12		C10008012
ISO100	165	145	130.5	Ø9,8	12		C10009010
ISO160	225	200	180.7	Ø11,8	16		C10011010
ISO200	285	260	240.7	Ø11,12	16		C10012010
ISO250	335	310	290.7	Ø11,12	16		C10013010
ISO320	425	395	371	Ø14,12	20		C10014012



Half Claw Clamp for use with Centring Ring (Tapped Holes)

Zinc plated mild steel body, stainless steel bolt

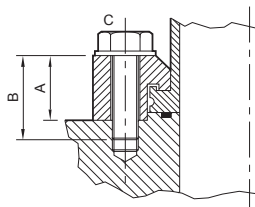
ISO63	22.5	35	M8	4			C10007151
ISO100	22.5	35	M8	8			C10007151
ISO160	23	40	M10	8			C10011151
ISO200	23	40	M10	12			C10011151
ISO250	23	45	M10	12			C10011151
ISO320	36.5	60	M12	12			C10014151
ISO400	36.5	60	M12	16			C10014151
ISO500	36.5	60	M12	16			C10014151



Half Claw Clamp for use with Centring Ring (Clear Holes)

Zinc plated mild steel body, stainless steel bolt

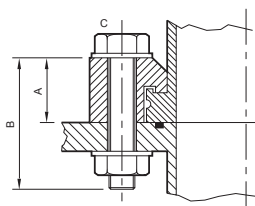
ISO63	22.5	35	M8	4			C10007150
ISO100	22.5	35	M8	8			C10007150
ISO160	23	40	M10	8			C10011150
ISO200	23	40	M10	12			C10011150
ISO250	23	45	M10	12			C10011150
ISO320	30.5	60	M12	12			C10014150
ISO400	30.5	60	M12	16			C10014150
ISO500	30.5	60	M12	16			C10014150



Half Claw Clamp for use with O-ring groove (tapped holes)

Zinc plated mild steel body, stainless steel bolt

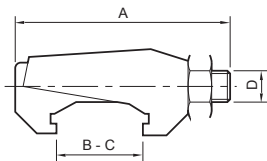
ISO63	18.6	35	M8	4			C10007093
ISO100	18.6	35	M8	8			C10007093
ISO160	19	40	M10	8			C10011093
ISO200	19	40	M10	12			C10011093
ISO250	19	40	M10	12			C10011093
ISO320	31	50	M12	12			C10014093
ISO400	31	50	M12	16			C10014093
ISO500	31	50	M12	16			C10014093



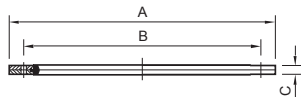
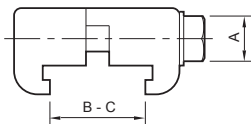
Half Claw Clamp for use with O-ring Groove (Clear Holes)

Zinc plated mild steel body, stainless steel bolt

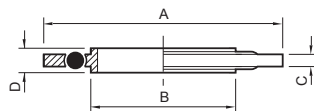
ISO63	18.6	45	M8	4			C10007149
ISO100	18.6	45	M8	8			C10007149



ISO63 requires 4 clamps; ISO80-160 requires 4-8 clamps; ISO200-320 requires 6-12 clamps; ISO400-500 requires 8-16 clamps



Use ISO polymer Co-Seals only for high vacuum applications $<10^{-6}$ mbar). In other applications, use the trapped O-ring seal; O-ring seals have higher mechanical strength.



Size	A	B	C	D	E	F	Ordering Number
------	---	---	---	---	---	---	-----------------

Claw Clamps

Zinc plated 1.1181 steel

ISO63/ISO250	60	22	33	M10			C10007090
ISO320/ISO500	75	32	42	M12			C10014090

Claw Clamps

aluminium

ISO63/100	–	22	33	M8			C10007156
ISO160/250	–	24	38	M10			C10011094
ISO320/500	–	35	56	M12			C10014094

Co-Seal

Nylon, nitrile

ISO40	101	80	4.2				B27158458
ISO63	116	110	4.2				B27158063
ISO100	151	145	4.2				B27158070
ISO160	200	190	5.7				B27158073

Fluoroelastomer

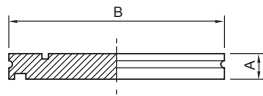
ISO40	101	80	4.2				B27158457
ISO63	116	110	4.2				B27158064
ISO100	151	145	4.2				B27158071
ISO160	200	190	5.7				B27158074

Trapped O-Ring

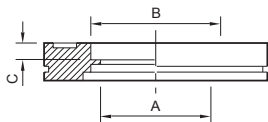
aluminium centring-ring, aluminium outer ring

Fluoroelastomer

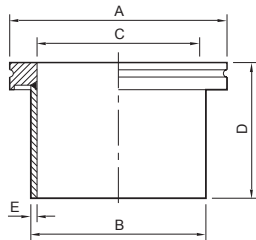
ISO63	95	70	3.9	8			C10521001
ISO100	128	102	3.9	8			C10523001
ISO160	179	153	3.9	8			C10524001



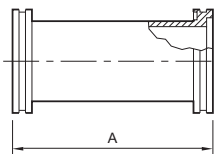
Size	A	B	C	D	E	F	Ordering Number
Blanking Flange for use with Collar Flange							
Stainless steel AISI 316L DIN 1.4404							
ISO63	12	95					C10007049
ISO80	12	110					C10008015
ISO100	12	130					C10009049
ISO160	12	180					C10011049
ISO200	12	240					C10012049
ISO250	12	290					C10013049
ISO320	17	370					C10014003
ISO500	17	550					C10016003



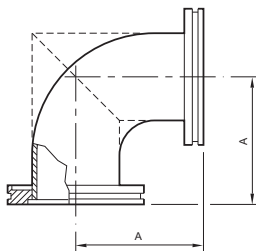
ISO Bored Flange							
Stainless steel AISI 316L DIN 1.4404							
ISO63	60.2	63.5	5.5				C10007138
ISO100	98.3	102	5.5				C10009157
ISO160	148	152	5.5				C10011068
ISO200	197	203	5.5				C10012053
ISO250	248	254	5.5				C10013059



Collar Weld Stub							
Stainless steel AISI 316L DIN 1.4404							
ISO63	95	76	70	100	3.2		C10007032
ISO80	110	76	83	100	3.2		C10008013
ISO100	130	108	102	100	3.2		C10009032
ISO160	180	159	153	100	3.2		C10011032
ISO200	240	219.1	213	100	3.2		C10012032
ISO250	290	267	261	100	3.2		C10013032

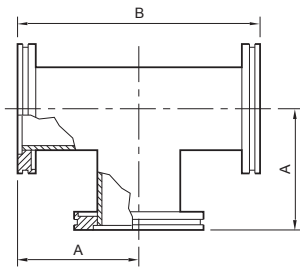


Nipple							
Stainless steel AISI 316L DIN 1.4404							
ISO63	176						C10007140
ISO100	216						C10009160
ISO160	276						C10011071
ISO200	356						C10012054
ISO250	416						C10013060

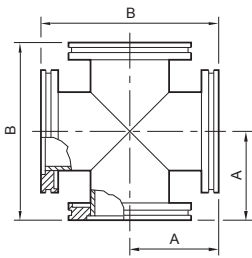


Elbow 90°							
Stainless steel AISI 316L DIN 1.4404							
ISO63	88						C10007203
ISO100	108						C10009203
ISO160*	138						C10011203
ISO200*	178						C10012203
ISO250*	208						C10013203

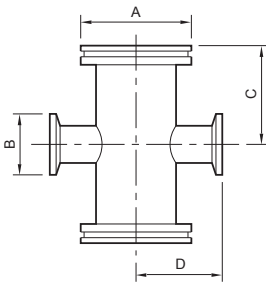
* Shown dotted



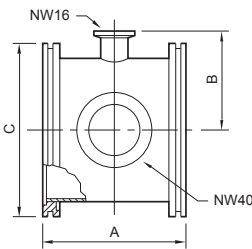
Size	A	B	C	D	E	F	Ordering Number
T-piece							
Stainless steel AISI 316L DIN 1.4404							
ISO63	88	176					C10007207
ISO100	108	216					C10009207
ISO160	138	276					C10011207
ISO200	178	356					C10012207



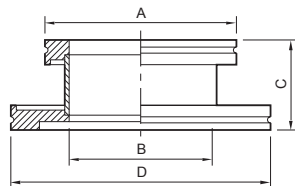
Size	A	B	C	D	E	F	Ordering Number
Cross Piece							
Stainless steel AISI 316L DIN 1.4404							
ISO63	88	176					C10007211
ISO100	108	216					C10009211



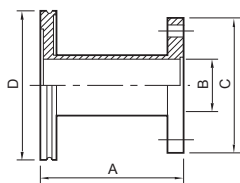
Size	A	B	C	D	E	F	Ordering Number
ISO to NW Reducing Cross							
Stainless steel AISI 316L DIN 1.4404							
ISO63/NW40	95	55	102	76			C10007232
ISO100/NW25	130	40	130	98			C10009231
ISO160/NW40	180	55	160	121			C10011232



Size	A	B	C	D	E	F	Ordering Number
Connector with Two Lateral Flanges							
Stainless steel AISI 316L DIN 1.4404							
ISO63	88	60	95				C10007215
ISO100	108	75	130				C10009215
ISO160	138	100	180				C10011215

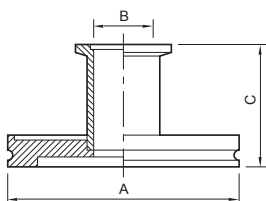


Size	A	B	C	D	E	F	Ordering Number
ISO/ISO Adapting Piece							
Stainless steel AISI 316L DIN 1.4404							
ISO80/ISO63	95	60	105	110	95		C10008021
ISO80/ISO100	110	73	105	130	110		C10009158
ISO100/ISO63	95	70	50	130	95		C10009111
ISO160/ISO63	95	70	50	180	95		C10011110
ISO160/ISO80	110	73	242	180	110		C10011069
ISO160/ISO100	130	102	50	180	130		C10011111

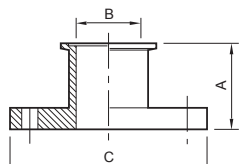


Supplied with bolts for tapped holes and bolts plus nuts and washers for plain holes

Size	A	B	C	D	E	F	Ordering Number
Adaptor ISO Bolted/ISO Collar							
Stainless steel AISI 316L DIN 1.4404							
ISO40 bolted/ISO63	106	41	100	95			C10007087
ISO63 bolted/ISO63	160	70	130	95			C10007155

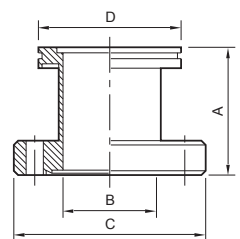


Adaptor ISO/NW							
Stainless steel AISI 316L DIN 1.4404							
ISO63/NW25	95	25	50				C10007115
ISO63/NW40	95	40	50				C10007116
ISO100/NW40	130	40	50				C10009122
ISO63/NW50	95	50	50				C10007118
ISO80/NW50	110	50	118				C10008003
ISO100/NW50	130	50	50				C10009123
ISO80/NW40	110	40	118				C10008002

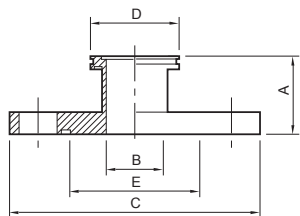


* Supplied with bolts for tapped holes and bolts plus nuts and washers for plain holes

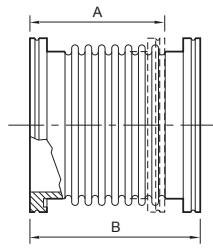
Adaptor ISO Bolted/NW							
Stainless steel AISI 316L DIN 1.4404							
					Europe	N. America	
ISO40 bolted/NW50*	50	41	100		C10005080	C10005080	
ISO40 bolted/NW40	69	40	100	No bolts supplied	N/A	A1516	
ISO63 bolted/NW50	50	50	130	No bolts supplied	N/A	A1509	
ISO63 bolted/NW40	68	40	130	No bolts supplied	N/A	A1448	
ISO63 bolted/NW40	50	40	130	No bolts supplied	N/A	A1574	
ISO40/ISO63 bolt kit for clear and tapped holes					N/A	NGV515000	



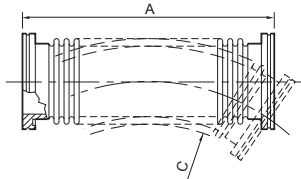
Adaptor ISO/CF							
Stainless steel AISI 316L DIN 1.4404							
ISO63/DN63CF/4½	110	60	114	95			C10007130
ISO100/DN100CF/6	111	98	152	130			C10009149
ISO100/DN160CF/8	113	148	203	180			C10011063



Adaptor ISO/ASA							
Stainless steel AISI 316L DIN 1.4404							
Without O-ring groove							
ISO63/2 inch ASA	106	60.2	152	95			C10007131
ISO80/3 inch ASA	106	72.9	190	110			C10008011
ISO100/3 inch ASA	106	98.3	190	130			C10009152
ISO100/4 inch ASA	106	98.3	229	130			C10009154
ISO160/6 inch ASA	112	148	279	180			C10011066
With O-ring groove							
ISO63/2 inch ASA	106	60.2	152	95	88.5		C10007132
ISO63/3 inch ASA	106	60.2	190	95	114.5		C10007134



C= maximum pressure, bar absolute



C= minimum band radius, static
D= minimum band radius, dynamic
E= maximum pressure, bar absolute

Size	A	B	C	D	E	F	Ordering Number
Flexible Bellows							
Stainless steel AISI 316L DIN 1.4404							
ISO63	106	127	1.5				C10007670
ISO80	106	127	1.5				C10008028
ISO100	107	127	1.5				C10009670
ISO160	170	220	1.5				C10011670
ISO200	170	220	1.5				C10012670
ISO250	170	220	1.5				C10013670

Flexible Pipelines							
Stainless steel AISI 316L DIN 1.4404							
ISO63	250	140	360	1.4			C10007285
ISO100	250	200	550	1.3			C10009285
ISO63	500	140	360	1.4			C10007286
ISO100	500	200	550	1.3			C10009286
ISO63	750	140	360	1.4			C10007288
ISO80	750	160	420	1.4			C10008024
ISO100	750	200	550	1.3			C10009288
ISO63	1000	140	360	1.4			C10007287
ISO100	1000	200	550	1.3			C10009287

Pump Hook-Up Kits



Pump hook-up kits are available as convenient boxed sets containing components, seals and clamps to connect pumps to mating flanges.

We offer a number of standard hook-up kits to simplify the installation of dry vacuum pumps.

Each kit has the required spool piece (if needed), bellows, seals and claw-clamps for direct connection of the dry pump to the appropriate size fore-line. All exhaust lines include NW40 braided flexibles.

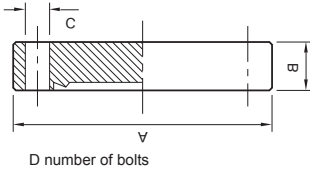
Kits are available with gate valves and can include a dead leg to reduce particulates from falling directly into the pump inlet.

For greater protection, KIT7-14-100 includes an ITO catchpot. KIT7-15-100 can be used with (but does not include) a Water Cooled Trap. Consult Edwards for more details.

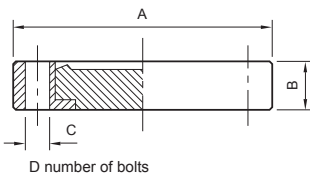
Ordering Information

Product Description	Order No.
Straight inlet, no gate valve, 40 mm fore-line	KIT710040
Straight inlet, no gate valve, 50 mm fore-line	KIT710050
Straight inlet, no gate valve, 63 mm fore-line	KIT710063
Straight inlet, no gate valve, 100 mm fore-line	KIT710100
Straight inlet, pneumatic gate valve, 63 mm fore-line	KIT712064
Straight inlet, pneumatic gate valve, 100 mm fore-line	KIT712101
Dead-leg inlet, pneumatic gate valve, 100 mm fore-line	KIT713101
Catchpot, pneumatic gate valve, 100 mm fore-line	KIT714101
Dead-leg inlet, pneumatic gate valve, 100 mm fore-line for water cooled trap (not included)	KIT715101

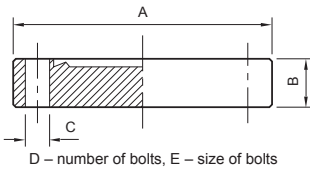
CF Flange Fittings



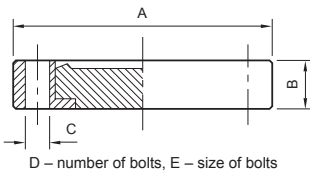
Size	A	B	C	D	E	F	Ordering Number
Blank Flange Non-Rotatable Clear							
Stainless steel AISI 304L DIN 1.4306							
Metric	Inch						
DN16CF	1½	34	7.6	4.3	6		C10001200
DN40CF	2¾	70	12.7	6.7	6		C10005200
DN63CF	4½	114	17.4	8.3	8		C10007400
DN100CF	6	152	19.9	8.3	16		C10009400
DN160CF	8	203	22.3	8.3	20		C10011300
DN200CF	10	254	24.6	8.3	24		C10012300



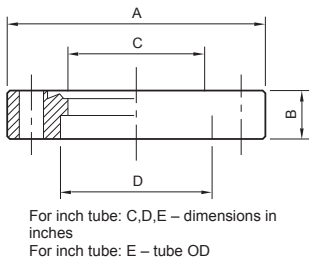
Blank Flange Rotatable Clear							
Stainless steel AISI 304L DIN 1.4306							
Metric	Inch						
DN16CF	1½	34	7.6	4.3	6		C10001201
DN40CF	2¾	70	12.7	6.7	6		C10005201
DN100CF	6	152	19.9	8.3	16		C10009401



Blank Flange Non-Rotatable Tapped							
Stainless steel AISI 304L DIN 1.4306							
Metric	Inch						
DN16CF	1½	34	7.6	4.3	6	M4	C10001202
DN40CF	2¾	70	12.7	6.7	6	M6	C10005202
DN63CF	4½	114	17.4	8.3	8	M8	C10007402
DN100CF	6	152	19.9	8.3	16	M8	C10009402

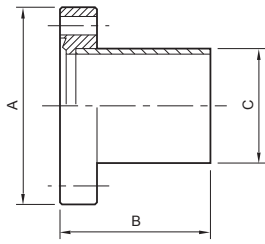


Blank Flange Rotatable Tapped							
Stainless steel AISI 304L DIN 1.4306							
Metric	Inch						
DN100CF	6	152	19.9	8.3	16	M8	C10009403
DN160CF	8	203	22.3	8.3	20	M8	C10011303

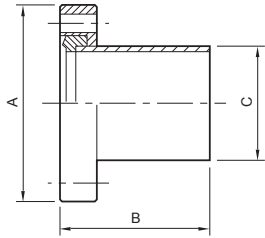


Bored Weld Flange Non-Rotatable Clear							
Stainless steel AISI 304L DIN 1.4306							
For metric tube							
Metric	Inch						
DN40CF	2¾	70	12.7	36.9	38.2		C10005207
DN40CF	2¾	70	12.7	40.1	41.3		C10005208
DN63CF	4½	114	17.4	49.6	51.1		C10007405
DN100CF	6	152	19.9	99.4	101.9		C10009405
DN200CF	10	254	24.6	200.4	203.5		C10012305

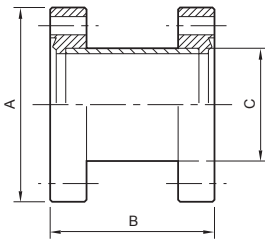
For inch tube							
Metric	Inch						
DN63CF	4½	114	17.4	1.875	2.01	2	C10007405
DN100CF	6	152	19.9	3.81	4.01	4	C10009405
DN200CF	10	254	24.6	7.812	8.02	8	C10012305



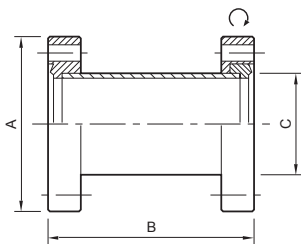
Size	A	B	C	D	E	F	Ordering Number
Half-Nipple Non-Rotatable Clear							
Stainless steel AISI 304L DIN 1.4306							
Metric	Inch						
DN16CF	1½	34	38	19			C10001250
DN40CF	2¾	70	63	38			C10005250
DN63CF	4½	114	105	64			C10007450
DN100CF	6	152	135	102			C10009450
DN160CF	8	203	167	152			C10011450



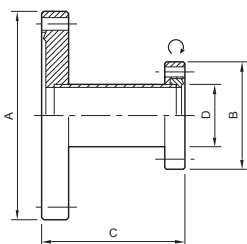
Half-Nipple Rotatable Clear							
Stainless steel AISI 304L DIN 1.4306							
Metric	Inch						
DN40CF	2¾	70	63	38			C10005251
DN63CF	4½	114	105	64			C10007451
DN100CF	6	152	135	102			C10009451
DN160CF	8	203	167	152			C10011451



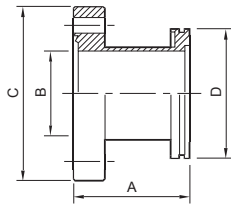
Full-Nipple Non-Rotatable Clear							
Stainless steel AISI 304L DIN 1.4306							
Metric	Inch						
DN40CF	2¾	70	126	38			C10005260



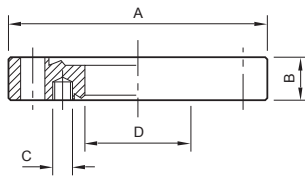
Full-Nipple Rotatable Clear							
Stainless steel AISI 304L DIN 1.4306							
Metric	Inch						
DN40CF	2¾	70	126	38			C10005261
DN63CF	4½	114	210	64			C10007461
DN100CF	6	152	270	102			C10009461



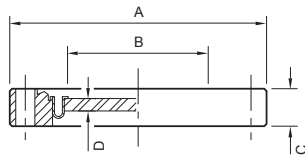
Reducing Nipple Rotatable Clear							
Stainless steel AISI 304L DIN 1.4306							
Metric	Inch						
DN40/16CF	2¾/1½	70	34	70	19		C10005370
DN63/40CF	4½/2¾	114	70	70	38		C10007570
DN100/40CF	6/2¾	152	70	70	38		C10009570



Size	A	B	C	D	E	F	Ordering Number
Adaptors ISO/CF							
Stainless steel AISI 316L DIN 1.4404							
Metric/inch							
ISO63/DN63CF/4½	110	60	114	95			C10007130
ISO100/DN100CF/6	111	98	152	130			C10009149
ISO160/DN160CF/8	113	148	203	180			C10011063

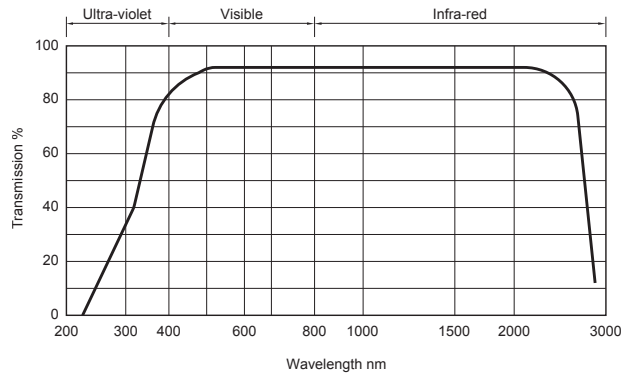


Zero Length Adaptor Major Clear/Minor Tapped							
Stainless steel AISI 304L DIN 1.4306							
Metric Inch							
DN40/16CF	2¾/1½	70	12.7	M4	13.2		C10005240
DN63/40CF	4½/2¾	114	17.5	M6	36.9		C10007440
DN100/40CF	6/2¾	152	19.9	M6	36.9		C10009440
DN100/63CF	6/4½	152	19.9	M8	61.2		C10009441
DN63/40CF	4½/2¾	114	17.5	¼-28	36.9		C10007441

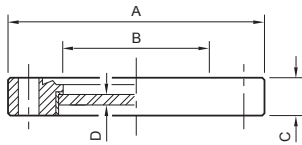


Bakeable to 350 °C, at no greater than 2 to 3 °C per minute.
Use annealed copper gaskets.

NW Zero Length Kodial Viewport							
Stainless steel AISI 304L DIN 1.4306							
Metric Inch							
DN16CF	1½	34	16	12.7	1		C10001600
DN40CF	2¾	70	38	12.7	2.5		C10005600
DN63CF	4½	114	63	17.4	3		C10007600
DN100CF	6	152	89	19.9	4		C10009600
DN160CF	8	203	136	22.3	6.5		C10011600

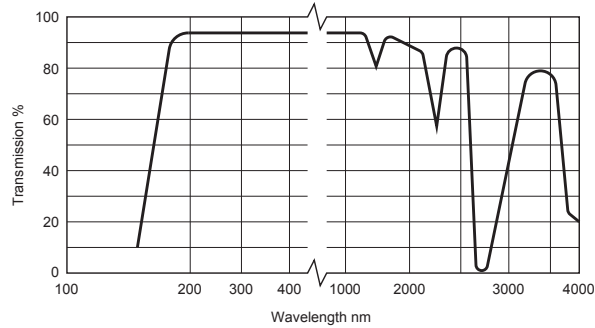


Kodial transmission curve

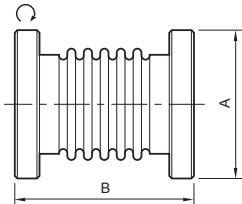


Bakeable to 200 °C, at no greater than 2 to 3 °C per minute.
Use annealed copper gaskets.

Size	A	B	C	D	E	F	Ordering Number
Zero Length Quartz Viewport							
Stainless steel AISI 304L DIN 1.4306							
Metric	Inch						
DN40CF	2¾	70	29.5	12.7	4		C10005610
DN63CF	4½	114	60	17.3	5		C10007610

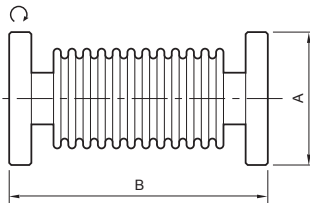


Quartz transmission curve.



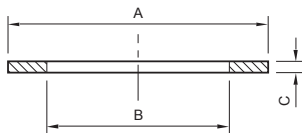
C – maximum pressure, bar absolute

Size	A	B	C	Ordering Number
Hydroformed Bellows Rotatable				
Stainless steel AISI 304L DIN 1.4306				
Metric	Inch			
DN16CF	1½	34	110	1.2
DN40CF	2¾	70	160	1.2



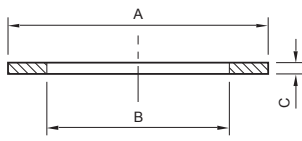
C – Minimum bend radius, static
D – Minimum bend radius, dynamic
E – Maximum pressure, bar absolute

Size	A	B	C	D	E	Ordering Number
Flexible Hose Rotatable						
Stainless steel AISI 304L DIN 1.4306						
Metric	Inch					
DN40CF	2¾	70	250	80	260	1.5
DN63CF	4½	114	250	140	360	1.5
DN16CF	1½	34	500	30	130	1.5
DN40CF	2¾	70	500	80	260	1.5
DN63CF	4½	114	500	140	360	1.5
DN100CF	6	152	750	200	550	1.5
DN40CF	2¾	70	1000	80	260	1.5
DN63CF	4½	114	1000	140	360	1.5

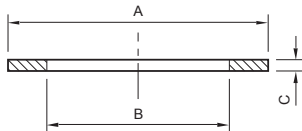


D – For flange OD, mm; E – For flange OD, inch
F – Number per pack

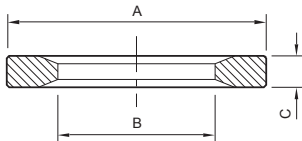
Size	A	B	C	D	E	F	Ordering Number
Copper Gaskets							
Metric	Inch						
DN16CF	1½	21	16	2	34	1.33	10
DN40CF	2¾	48	37	2	70	2.75	10
DN63CF	4½	82	63	2	114	4.5	10
DN100CF	6	120	101	2	152	6	10
DN160CF	8	171	152	2	203	8	5
DN200CF	10	222	203	2	254	10	5
DN250CF	12	270	254	2	304	12	5



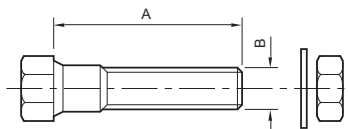
D – For flange OD, mm; E – For flange OD, inch
F – Number per pack



D – For flange OD, mm; E – For flange OD, inch
F – Number per pack



D – For flange OD, mm; E – For flange OD, inch
F – Number per pack



C – number per pack

Size	A	B	C	D	E	F	Ordering Number
------	---	---	---	---	---	---	-----------------

Annealed Copper Gaskets

Metric	Inch						
DN16CF	1½	21	16	2	34	1.33	5
DN40CF	2¾	48	37	2	70	2.75	5
DN63CF	4½	82	63	2	114	4.5	5
DN100CF	6	120	101	2	152	6	5
DN160CF	8	171	152	2	203	8	5
DN200CF	10	222	203	2	254	10	5
DN250CF	12	270	254	2	304	12	5

Silver Plated Copper Gaskets

Metric	Inch						
DN16CF	1½	21	16	2	34	1.33	5
DN40CF	2¾	48	37	2	70	2.75	5
DN63CF	4½	82	63	2	114	4.5	5
DN100CF	6	120	101	2	152	6	5
DN160CF	8	171	152	2	203	8	5
DN200CF	10	222	203	2	254	10	5

Fluoroelastomer Gaskets

Metric	Inch						
DN16CF	1½	29	19	2	34	1.33	2
DN40CF	2¾	50	38	3	70	2.75	2
DN63CF	4½	76	64	3	114	4.5	2
DN100CF	6	112	100	3	152	6	2
DN160CF	8	162	150	3	203	8	2

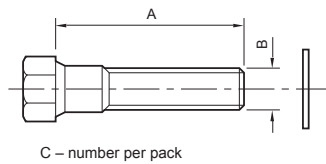
HEX Head Nut, Bolt and Washers for Clear Hole CF Flanges

Standard	Metric	Inch				
	DN16CF	1½	20	M4	25	C10001630
	DN40CF	2¾	35	M6	25	C10005630
	DN63CF	4½	45	M8	25	C10007630
	DN100CF	6	50	M8	25	C10009630
	DN160CF	8	60	M8	25	C10011630
	DN200CF	10	60	M8	25	C10012630

DN40CF	2¾	35	¼-28	25	C10005640
DN200CF	10	60	⅝-24	25	C10012640

Silver Plated

Metric	Inch				
DN40CF	2¾	35	M6	25	C10005650
DN63CF	4½	45	M8	25	C10007650
DN100CF	6	50	M8	25	C10009650
DN160CF	8	60	M8	25	C10011650
DN200CF	10	60	M8	25	C10012650



Size	A	B	C	D	E	F	Ordering Number
------	---	---	---	---	---	---	-----------------

HEX Head Bolt and Washers for Tapped Hole CF Flanges

Standard

Metric	Inch	A	B	C	D	E	F	Ordering Number
DN40CF	2¾	25	M6	25				C10005670
DN63CF	4½	30	M8	25				C10007730

Silver Plated

Metric	Inch	A	B	C	D	E	F	Ordering Number
DN40CF	2¾	25	M6	25				C10005690
DN63CF	4½	30	M8	25				C10007690
DN100CF	6	35	M8	25				C10009690

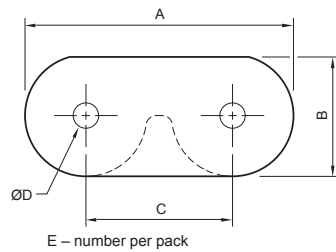


Plate Nuts

Metric	Inch	A	B	C	D	E	F	Ordering Number
DN40CF	2¾	41	11	29	M6	25		C10005710
DN63CF	4½	51	12	35	M8	25		C10007710
DN40CF	2¾	41	11	29	¼-28	25		C10005720

Cord and Tubing

Lubrication All O-rings, nitrile rubber extruded cord and sheet used in low vacuum applications should be lubricated with either vapour pump fluid, Fomblin[®] vacuum grease or Apiezon[®] grease M. Lubrication will prolong the life of the material and facilitate sealing.

Apply the oil or grease very sparingly and evenly, coating the seal to give it no more than a shining surface with no visible smears. Excessive lubrication may cause leaks.

In general, but with certain exceptions dictated by common sense, seals used in high vacuum applications should be lubricated, but even more sparingly, using vapour pump fluid.

Cleaning The only necessary and recommended method of cleaning O-rings and nitrile rubber extruded cord or sheet is by wiping with a dry, lint free, soft cloth. Most solvent fluids are liable to be absorbed by fluoroelastomer and nitrile rubber, swelling these materials and subsequently outgassing into the system.

Nitrile Rubber Cord

Nitrile cord should be cut perfectly square and to a length which is 5% above the mean circumference of the groove in which it is laid. Compression and sealing of the butt joint is thereby assured.

Ordering Information

Product Description	Order No.
Nitrile rubber cord	
0.275 inch (7 mm) diameter	H02101008
0.312 inch (8 mm) diameter	H02101009
0.500 inch (12.7 mm) diameter	H02101015

State exact length required (per metre).

Vacuum Tubing

This high quality neoprene rubber vacuum tubing is suitable for use down to approximately 10^{-4} mbar. We recommend that you use the shortest length possible.

Ordering Information

Product Description	Order No.
Rubber vacuum tube, 1 m lengths	
5 mm bore, 19 mm external diameter	H02100002
7 mm bore, 17 mm external diameter	H02100003
9 mm bore, 25 mm external diameter	H02100004
12 mm bore, 28 mm external diameter	H02100005
20 mm bore, 34 mm external diameter	H02100006
Flexible hose connection*	C06600025

* Neoprene, steel reinforced, 12 inch (305 mm) long, to suit 1½ inch external diameter tube