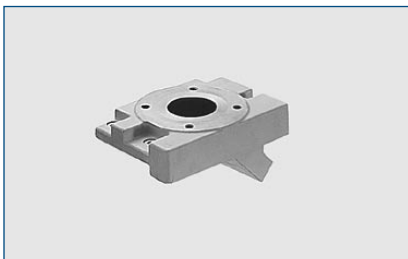


Roots Pump Adaptor



Roots pump adaptor

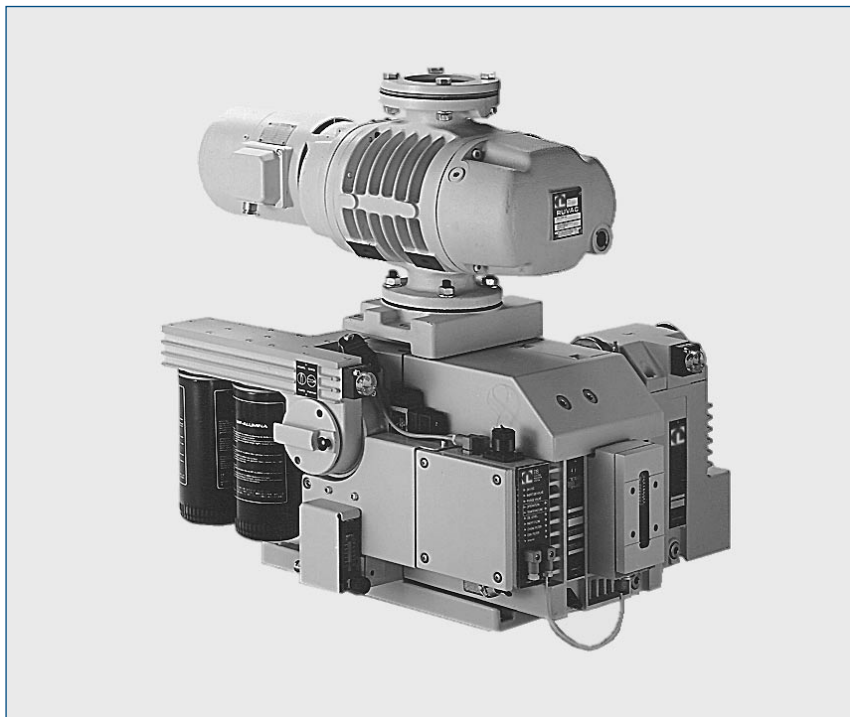
The Roots pump adaptor allows the direct installation of a Roots pump on a TRIVAC D 40/65 B/BCS.

Advantages to the User

- Compact and space-saving
- Short and direct connection between the pumps
- Minimal conductance loss
- Easy installation

Typical Application

- Simple assembly of a small pump system



Pump system consisting of a TRIVAC D 65 BCS and a RUVAC WS 251

| Technical Data | | Roots Pump Adaptor |
|----------------------|----------|---|
| Connection to pump | TRIVAC | D 40/65 B/BCS (-PFPE) and RUVAC WAWAU/WS/WSU 251 |
| Weight, approx. | kg (lbs) | 11.5 (25.4) |
| Ordering Information | | Roots Pump Adaptor |
| Roots pump adaptor | | Part No. 168 30 |