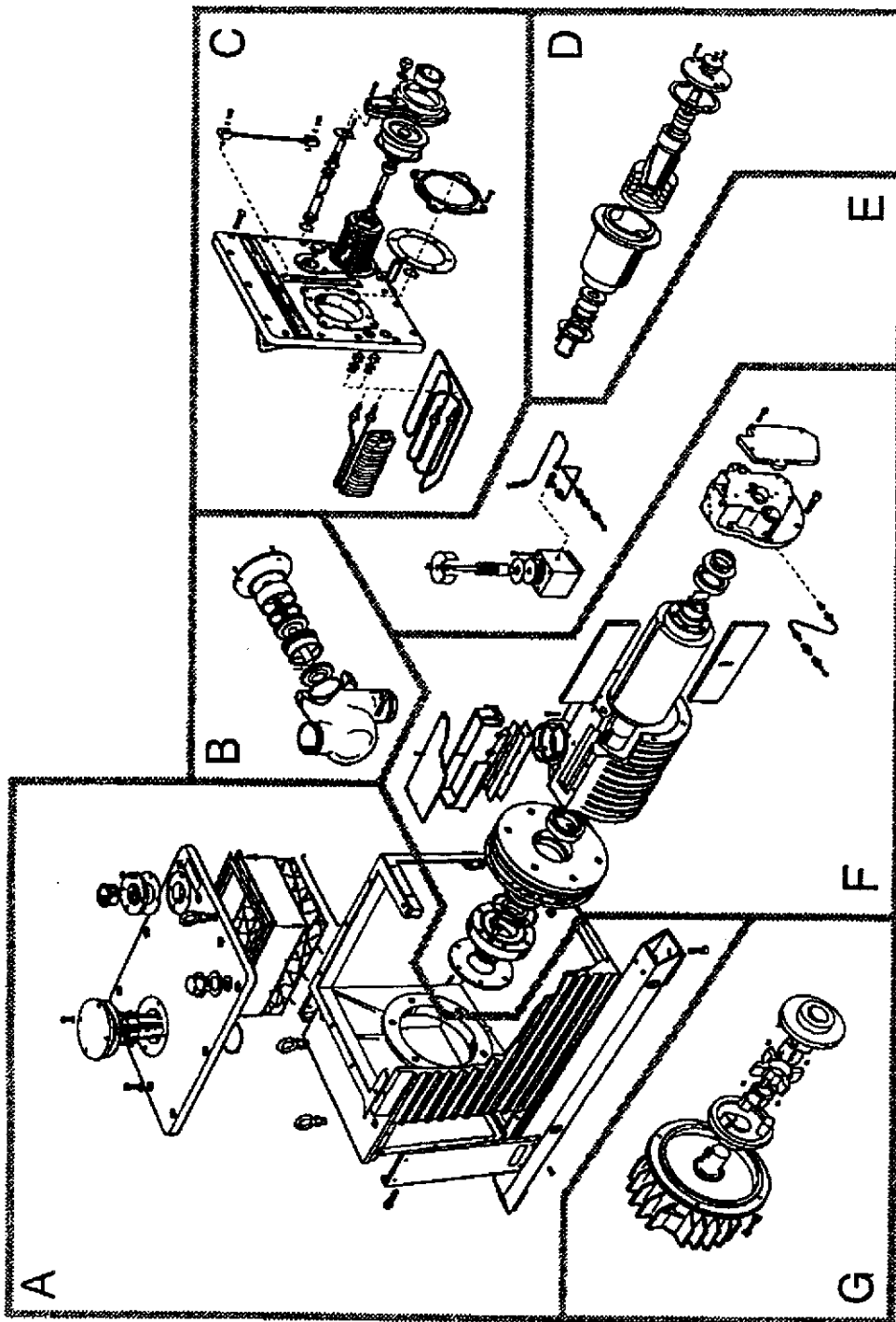


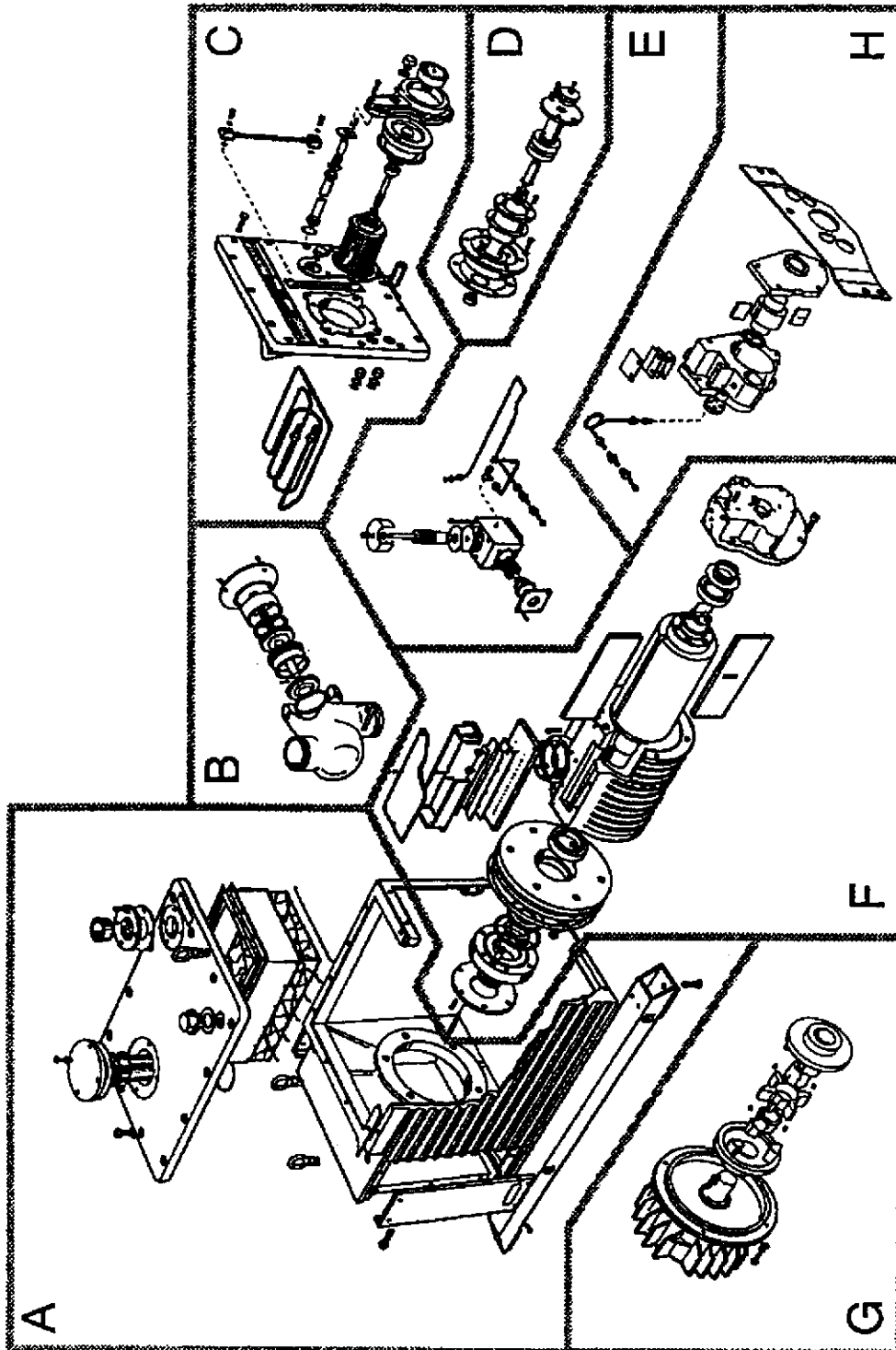
E1M175S AND E1M275S MAJOR SUB ASSEMBLIES



- A. Main Oil Box Assembly
- B. Inlet Valve Assembly.
- C. Oil Box End-Plate and Oil Filter Assembly.
- D. Gas Ballast Valve Assembly
- E. Oil Distributor Assembly
- F. HV Rotor Assembly
- G. Motor Drive Assembly

Figure 1 - E1M175S/E1M275S major sub-assemblies

E2M175S AND E2M275S MAJOR SUB ASSEMBLIES



- A. Main Oil Box Assembly.
- B. Inlet Valve Assembly.
- C. Oil Box End-Plate and Oil Filter Assembly.
- D. Gas Ballast Valve Assembly.
- E. Oil Distributor Assembly.
- F. High Vacuum (HV) Rotor Assembly.
- G. Motor Drive Assembly.
- H. Low Vacuum (LV) Rotor Assembly.

Figure 2 - E2M175S/E2M275S major sub-assemblies

ITEM	DESCRIPTION	E1M 175S	E1M 275S	E2M 175S	E2M 275S	Item No	Kit No
1	Piston assy.	1	1	1	1	A44001001	1, 2,3,4,5,6
2	Bearing housing assy.	1	1	1	1	A44001002	
4	Valve pad	1	1	1	1	A44001004	
5	Piston ring	1	1	1	1		
6	Inlet valve body	1	1	1	1	A34601024	
7	Cover plate	1	1	1	1	A21049001	
9	Spring guide	1	1	1	1	A27220001	
10	Compression spring	1	1	1	1	A27102020	
11	Sleeve	1	1	1	1	A27806002	
13	'O' ring	1	1	1	1		
14	'O' ring	1	1	1	1		
15	'O' ring	1	1	1	1		
16	'O' ring	1	1	1	1		
17	Split pin 1/16" dia x1" lg s/s	1	1	1	1		
19	Skt hd cap screw, M6x10mm	4	4	4	4	218091368	

Table 5 - Inlet valve sub-assembly - common items

(A) Main oil box sub-assembly

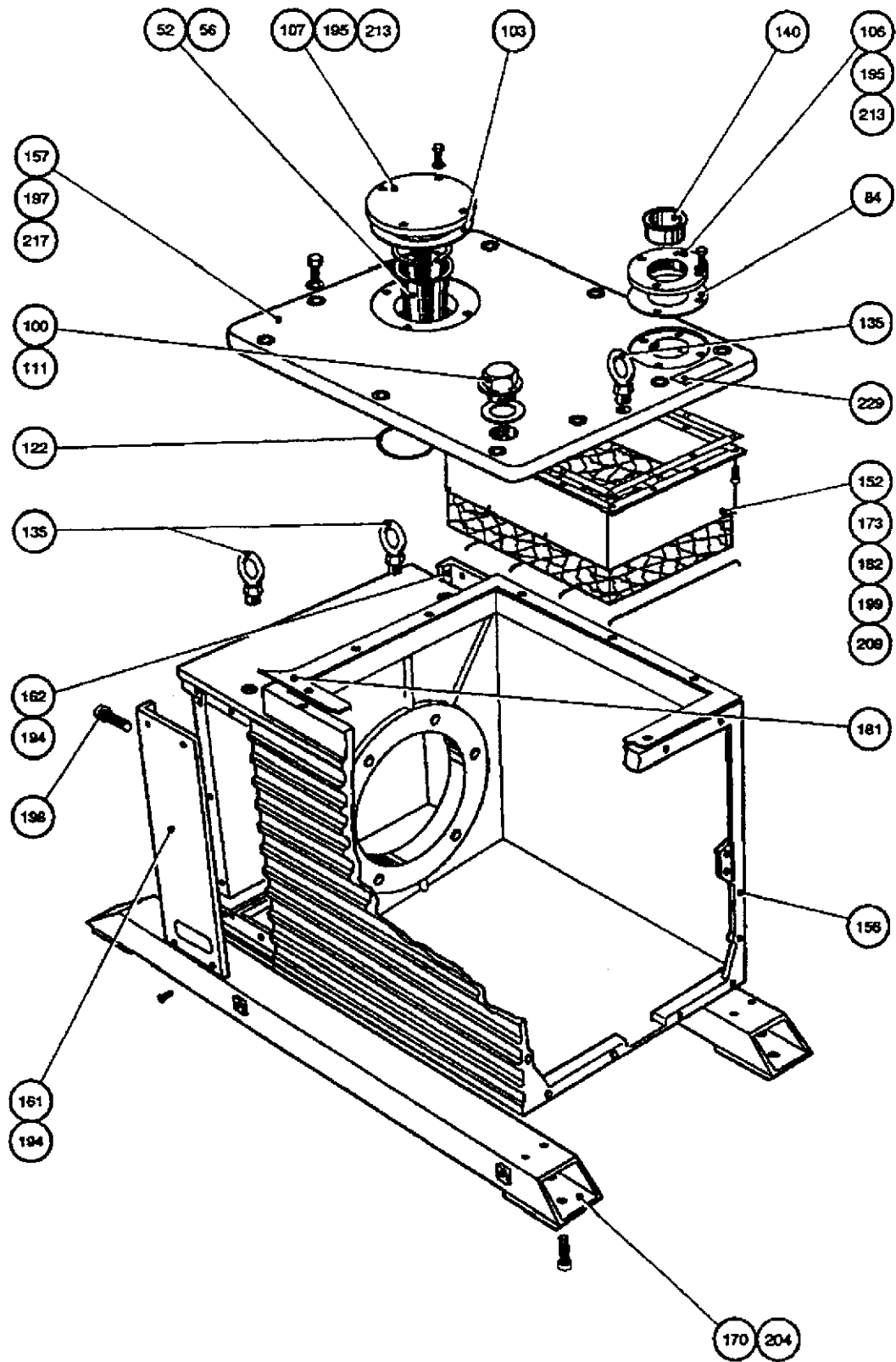


Figure 3 - (A) Main oil box sub-assembly

ITEM	DESCRIPTION	E1M 175S	E1M 275S	E2M 175S	E2M 275S	Item No	Kit No
52	Filter assembly	1	1	1	1	A22305011	1,2,3,4,5,6
56	Circlip	1	1	1	1	A22426006	
84	Exhaust gasket	1	1	1	1		
100	Plug-1" BSP	1	1	1	1	A26002022	
103	Trapped 'O' ring, 63mm	1	1	1	1		
106	Flange, ISO 40x1.5 inch	1	1	1	1	C10005005	
107	Blank flange ISO 63	1	1	1	1	A52803027	
111	Dowty seal, 1 inch BSP	1	1	1	1		
122	'O' ring	1	1	1	1		
135	Eyebolt, M16	3	3	3	3	218790007	
140	Red cap	1	2	1	1	H01503015	1, 2,3,4,5,6
170	Base runner	2	3	2	2	A20499018	
194	Pan hd screw, M8x20lg (m/stl)	8	8	8	8		
195	Hex hd screw, M8x30lg (m/stl)	8	8	8	8		
197	Hex hd bolt, M8x50lg (m/stl)	10	12	10	12		
198	Skt hd, cap screw, M110x45	6	6	6	6		
199	Skt hd cap screw, M6x16	14	18	14	18		
204	Smt hd cap screw, M16x25	4	4	4	4		
209	Wire l6 swg x 150mm (st stl)	4	6	4	6		
213	'A' form washer, M8, (m/stl)	8	8	8	8		
217	S coil spring washers	10	12	10	12		
229	Hazard warning label	1	1	1	1	E20001084	

Table 3 - Main oil box sub-assembly - common items parts list

ITEM	DESCRIPTION	E1M 175S	E1M 275S	E2M 175S	E2M 275S.	Item No.	Kit No
152	Box assy.	1		1		A36601004	1, 2,3,4,6
156	Oil box	1	1	1	1	A34701004	
			1		1	A34601028	
157	Lid	1		1		A34701028	
			1		1	A36601022	
161	Side panel, LH	1		1		A34701022	
			1		1	A36601063	
162	Side panel, RH	1		1		A36701063	
			1		1	A36601064	
173	Knitmesh	1		1		A36701064	
			1		1	A22305014	1, 2,3,4,5,6
181	Lid gasket	1		1		A22305015	
182	Knitmesh gasket	1		1			1, 2,3,4,5,6
			1		1		1, 2,3,4,5,6

Table 4 - Main oil box sub-assembly - specific items part list

(B) Inlet valve sub-assembly

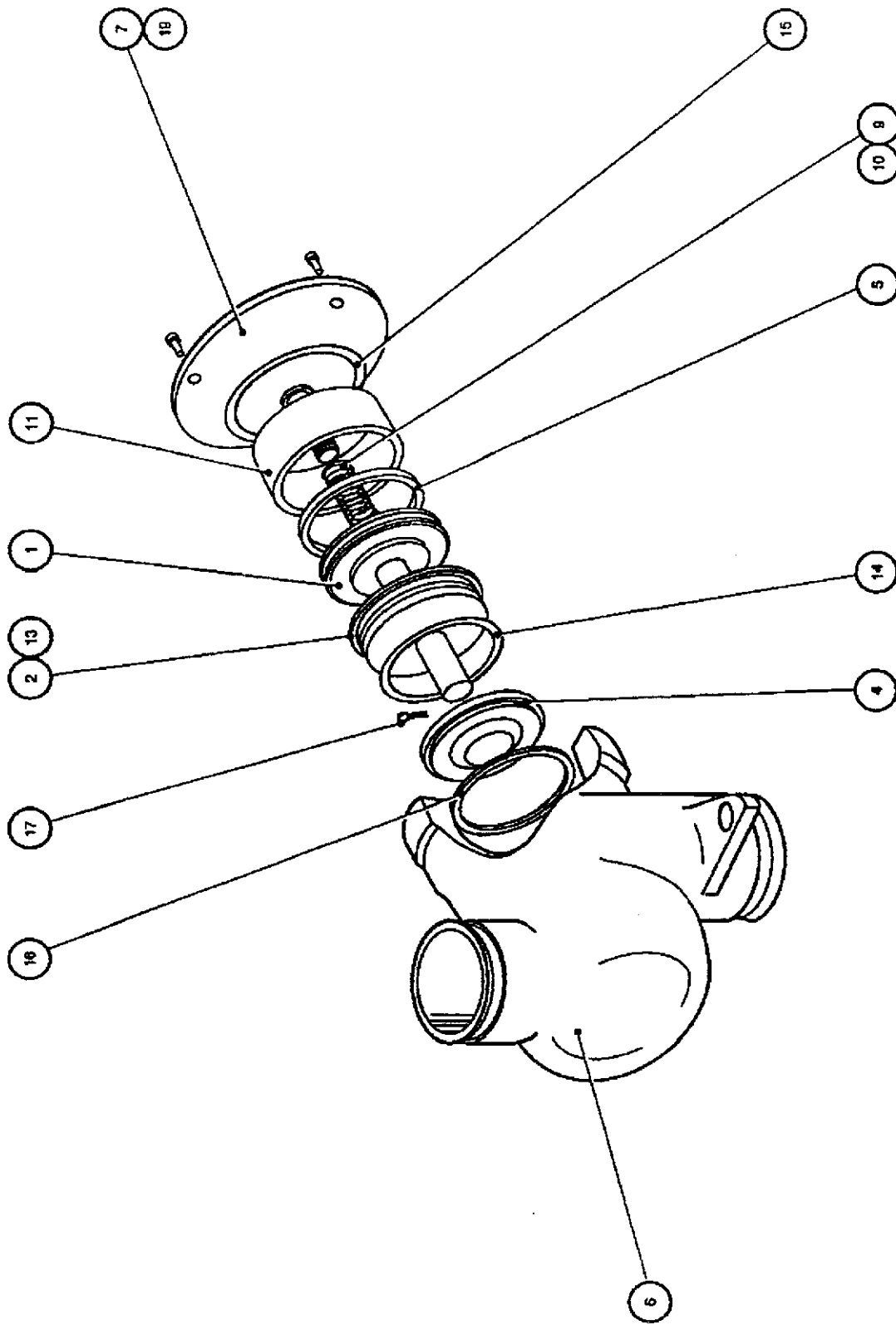


Figure 4 - (B) Inlet valve sub-assembly

(C) Oil box end-plate and oil filter sub-assembly

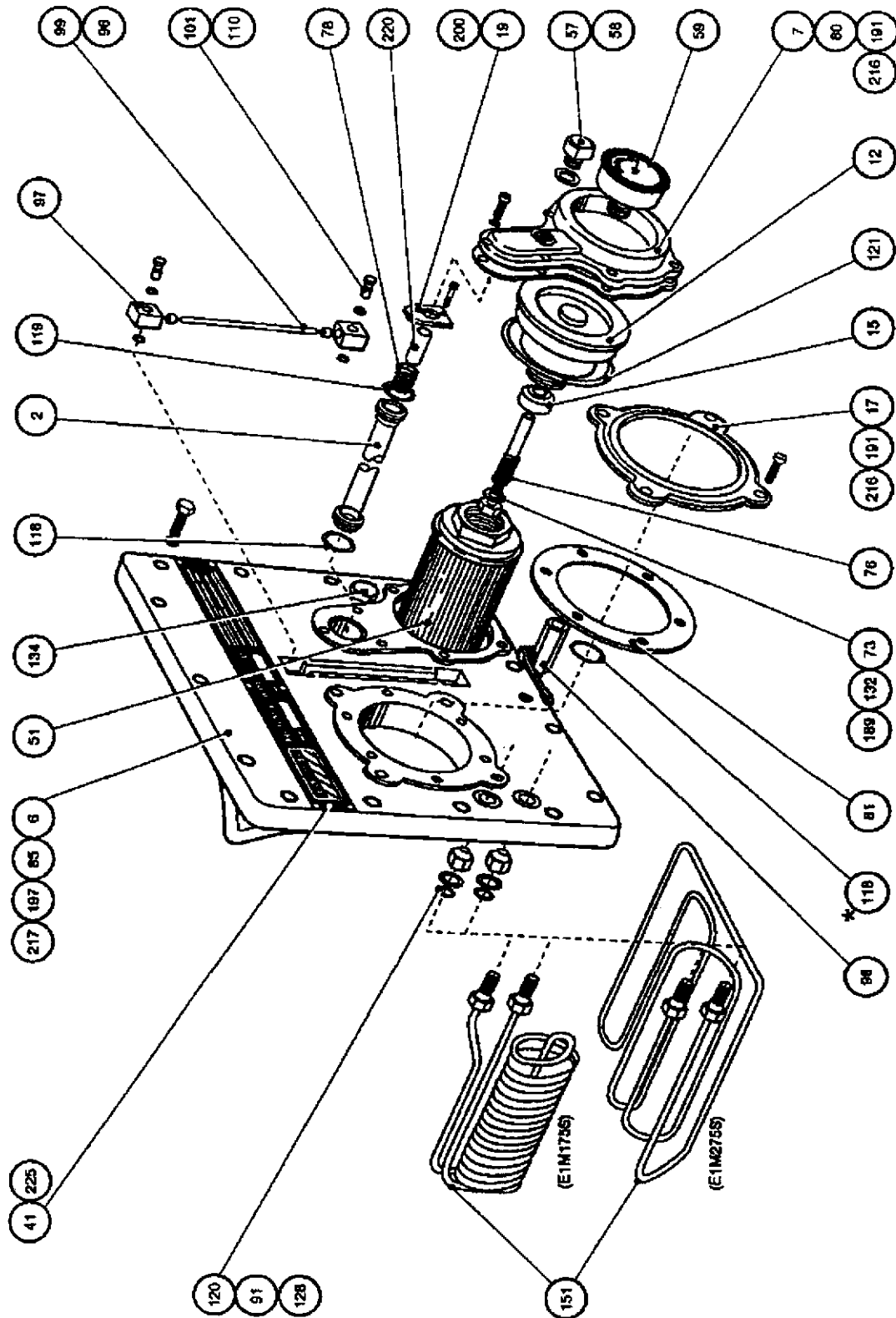


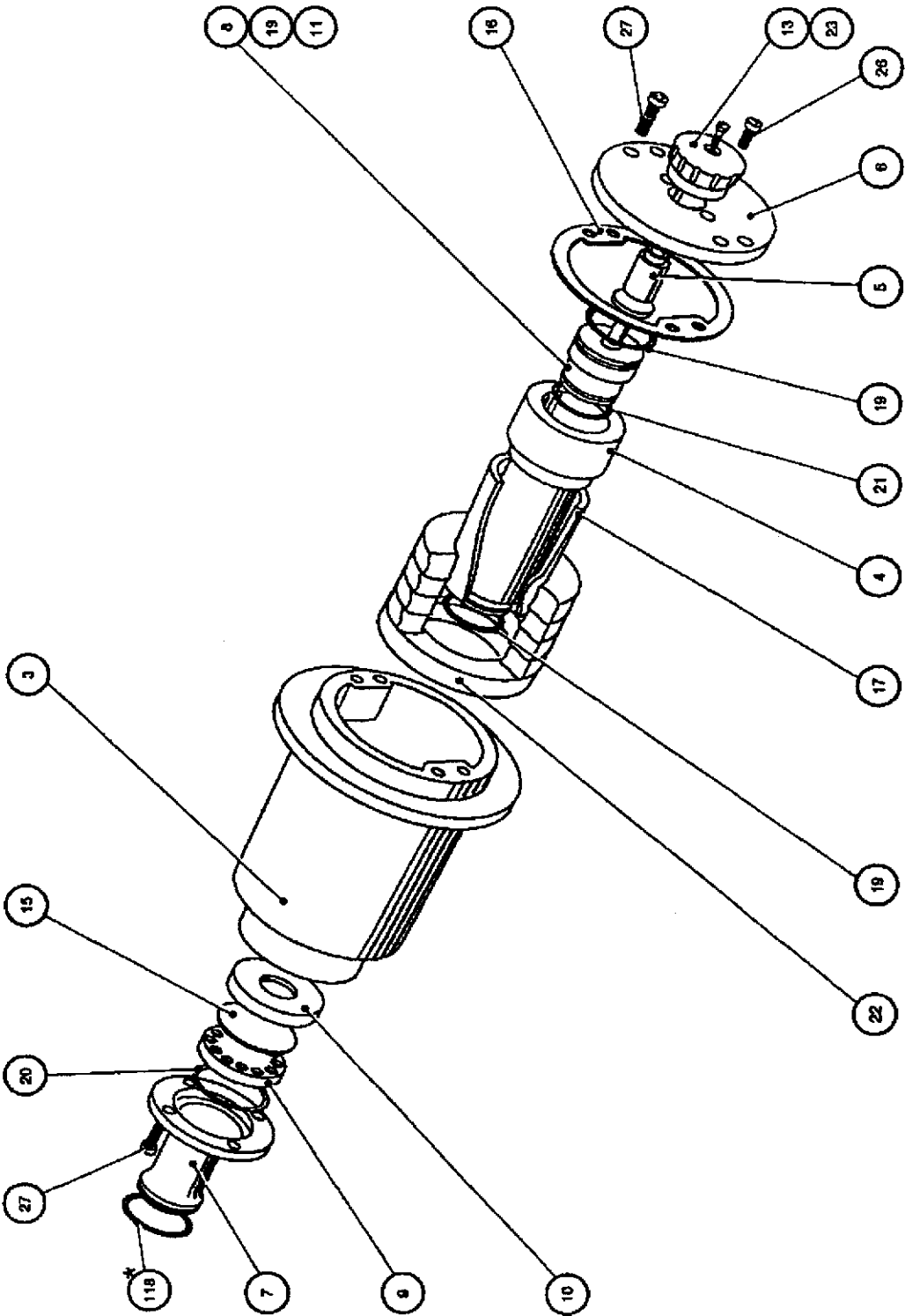
Figure 5 - (C) Oil box end-plate and oil filter sub-assembly

Used on A34801000 - see Figure 5

ITEM	DESCRIPTION	E1M	E1M	E2M	E2M	Item No	QTY.
		175S	275S	175S	275S		
2	Oil tube assy.	1	1	1	1	A36601003	
6	End plate	1	1	1	1	A34601034	
7	Filter head	1	1	1	1	A36615002	
12	Filter adaptor	1	1	1	1	A34601060	
15	Valve pad	1	1	1	1		3,4,5,6
17	Bezel	1	1	1	1	A34601057	
19	Spring clamp	1	1	1	1	A34601061	
41	Label	1	1	1	1	A20001066	
51	Filter element	1	1	1	1		3,4,5,6
57	1/2" BSP plug	1	1	1	1	A26002021	
58	Dowty seal 1/2" BSP	1	1	1	1		1, 2,3,4,5,6
59	Vacuum gauge	1	1	1	1	A22906001	
73	Washer 2BA s/s	1	1	1	1	211813197	
76	Spring	1	1	1	1	A27102022	3,4,5,6
78	Spring	1	1	1	1	A27102019	3,4,5,6
80	Filter head gasket	1	1	1	1		1, 2,3,4,5,6
81	Ballast gasket	1	1	1	1		1, 2,3,4,5,6
85	End plate gasket	1	1	1	1		1, 2,3,4,5,6
91	Cooling coil spacer	2	2	2	2	A27802010	
96	End cap	2	2	2	2	A00906058	3,4,5,6
97	Sight glass connector	2	2	2	2	A34601050	
98	Ball valve 1/2" BSP	1	1	1	1	A28702003	
99	Sight glass	1	1	1	1	A01601089	3,4,5,6
101	Banjo bolt 1/4" BSP	2	2	2	2	A01601105	
110	Dowty seal 1/4" BSP	4	4	4	4		1, 2,3,4,5,6
118	'O' ring	2	2	2	2		1, 2,3,4,5,6
119	'O' ring	1	1	1	1		1, 2,3,4,5,6
120	'O' ring	2	2	2	2		1, 2,3,4,5,6
121	'O' ring	1	1	1	1		1, 2,3,4,5,6
128	Locknut 3/4" BSP	2	2	2	2	M01500011	
132	Spirol pin 5x50mm	1	1	1	1	212370643	
134	Taper press. plug 3/4" BSP	1	1	1	1	H03517001	
151	Cooling coil assembly	1				A34601007	
						A34701002	
189	Hex hd screw, M5x60 (cad)	1	1	1	1		
191	Ch hd screw. M6x25lg. (m/s cad)	11	11	7	7		
197	Hex hd bolt, M8x50 (m/s cad)	15	15	15	15		
200	Shakeproof washer, M6 (m/s cad)	11	11	7	7		
216	Skt hd cap screw, M6x25	15	15	15	15		
217	S/coil spring washer, M8	1	1	1	1		
220	Spring pin, 12 dia. x 22	1	1	1	1	212170235	
225	Rivet	6	6	6	6	211430301	

Table 6 - Oil box end-plate and oil filter sub-assembly common items

(D) Gas ballast valve sub-assembly



* Itemised on A34701000 - see Figure 4

Figure 6 - (D) E1M175/E1M275 Gas ballast valve sub-assembly

(D) Gas ballast valve sub-assembly

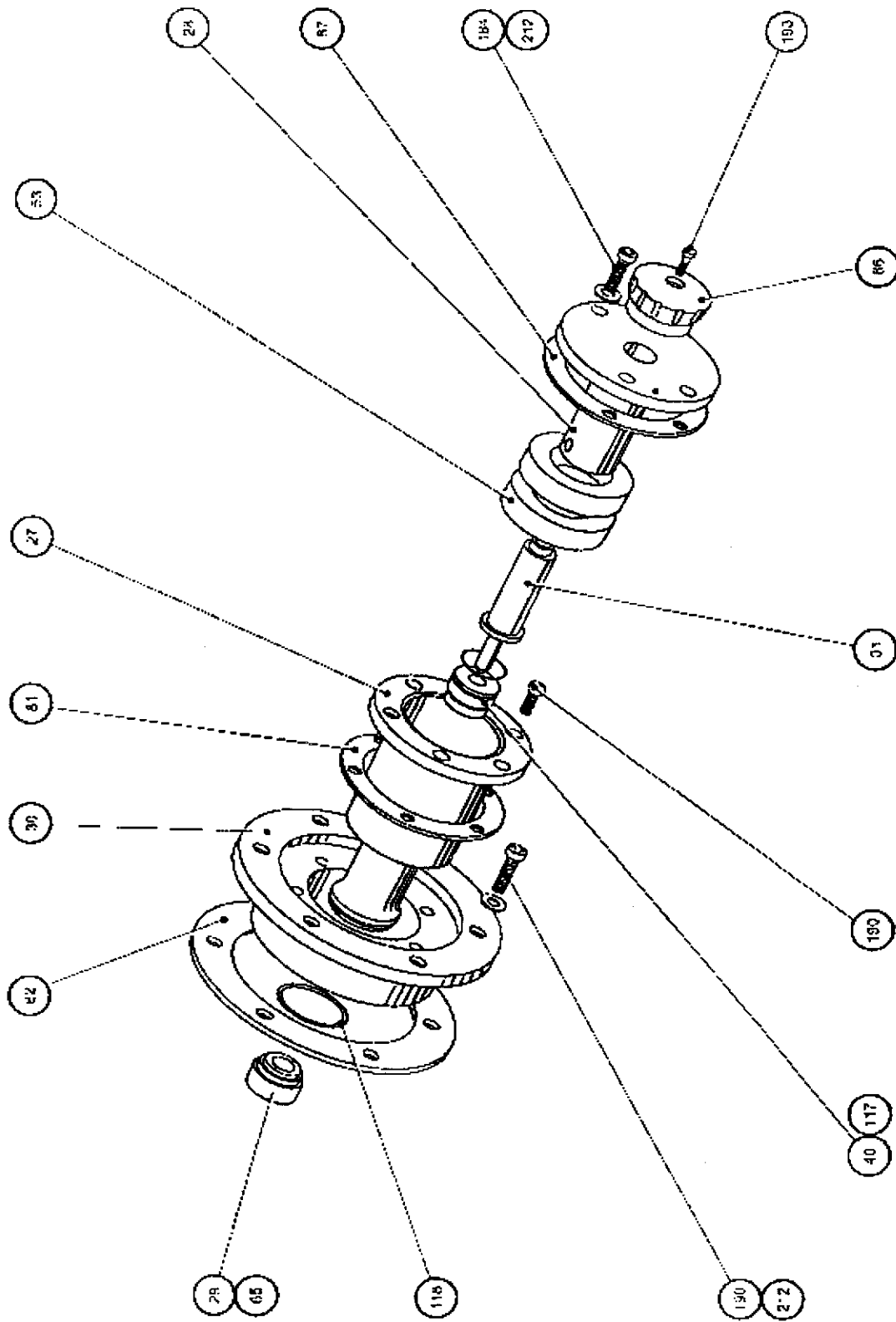


Figure 7 - (D) E2M175S/E2M275S Gas ballast valve sub-assembly

ITEM	DESCRIPTION	E1M 175S	E1M 275S	E2M 175S	E2M 275S	Item No	Kit No
3	Gas ballast body	1	1	1	1	A34601032	
4	Gas ballast bearing	1	1	1	1	A34601033	
5	Ballast spindle	1	1	1	1	A34601036	
6	Gas ballast cover	1	1	1	1	A34601052	
7	Connector	1	1	1	1	A34601053	
8	Piston	1	1	1	1	A34601054	
9	Orifice plate	1	1	1	1	A34601055	
10	Insert	1	1	1	1	A34601056	
11	Jet	1	1	1	1	A34601070	
13	Ballast knob	1	1	1	1	A19201013	
15	Gas ballast valve	1	1	1	1		1, 2,3,4
16	Body gasket	1	1	1	1	A27159429	
17	Deflector tube	1	1	1	1	A27811006	
19	'O' ring, Viton	3	3	3	3		1, 2,3,4
20	'O' ring, Viton	1	1	1	1		1, 2,3,4
21	'O' ring, Viton	1	1	1	1		1, 2,3,4
22	Ballast filter	5	5	5	5	A22305040	3,4
23	Csk hd screw, M4x16 (m/s cad)	1	1	1	1		
26	*Skt hd cap screw, M4x12	2	2	2	2		
27	Skt hd cap screw, M5x20	8	8	8	8		

Table 7- E1M175S/E1M275S Gas ballast valve sub-assembly - common items

ITEM	DESCRIPTION	E1M 175S	E1M 275S	E2M 175S	E2M 275S	Item No	Kit No
27	Ballast valve body	1	1	1	1	A36601032	
28	Ballast valve bearing	1	1	1	1	A36601033	
29	Ballast plug	1	1	1	1	A36601034	
30	Adaptor	1	1	1	1	A36601035	
31	Ballast spindle	1	1	1	1	A36601036	
40	Ballast piston assy.	1	1	1	1	A19201007	
53	Ballast filter (felt)	2	2	2	2	A22305041	5,6
65	Ballast valve	1	1	1	1	A25904601	5,6
66	Ballast knob	1	1	1	1	A19201013	
81	Ballast gasket	1	1	1	1	A27159614	5,6
82	Ballast gasket	1	1	1	1	A27159615	5,6
87	Body gasket	1	1	1	1	A27159428	5,6
117	'O' ring	1	1	1	1		3,4,5,6
118	'O' ring	1	1	1	1		3,4,5,6
184	Skt hd screw, M6x30	4	4	4	4		
190	Ch hd screw, M6x16 (m/s)	8	8	8	8		
193	Csk hd screw, M4x16 (m/s)	1	1	1	1		
212	Washer, M6 (m/s cad)	10	10	10	10		

Table 8 - E2M175S/E2M275S Gas ballast valve sub-assembly - common items

(E) Oil Distributor sub-assembly

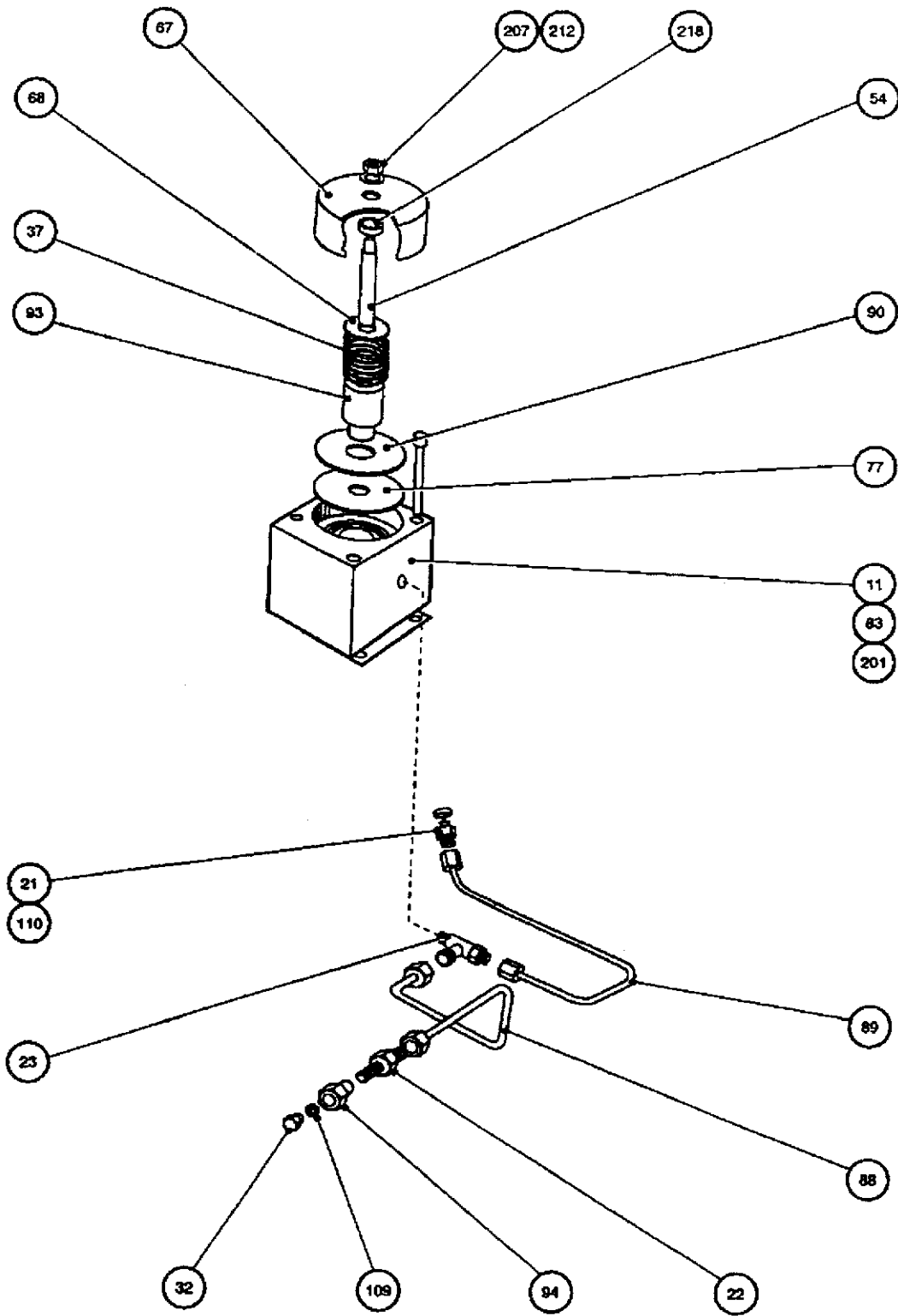


Figure 8 - (E) EM1175S/E1M275S Oil distributor sub-assembly

(E) Oil Distributor sub-assembly

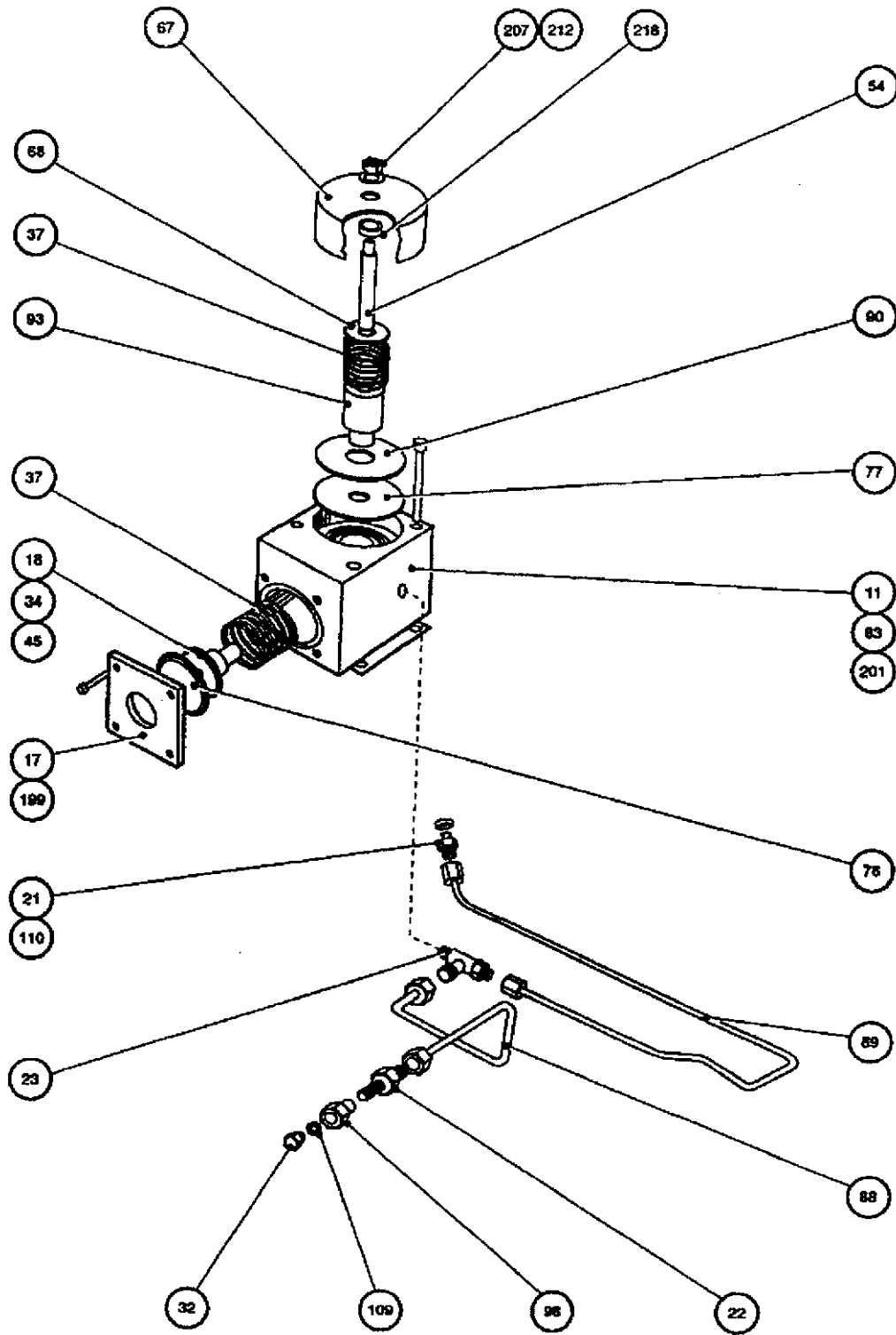


Figure 9 - (E) E2M175S/E2M275S Oil distributor sub-assembly

(E) Oil Distributor sub-assembly

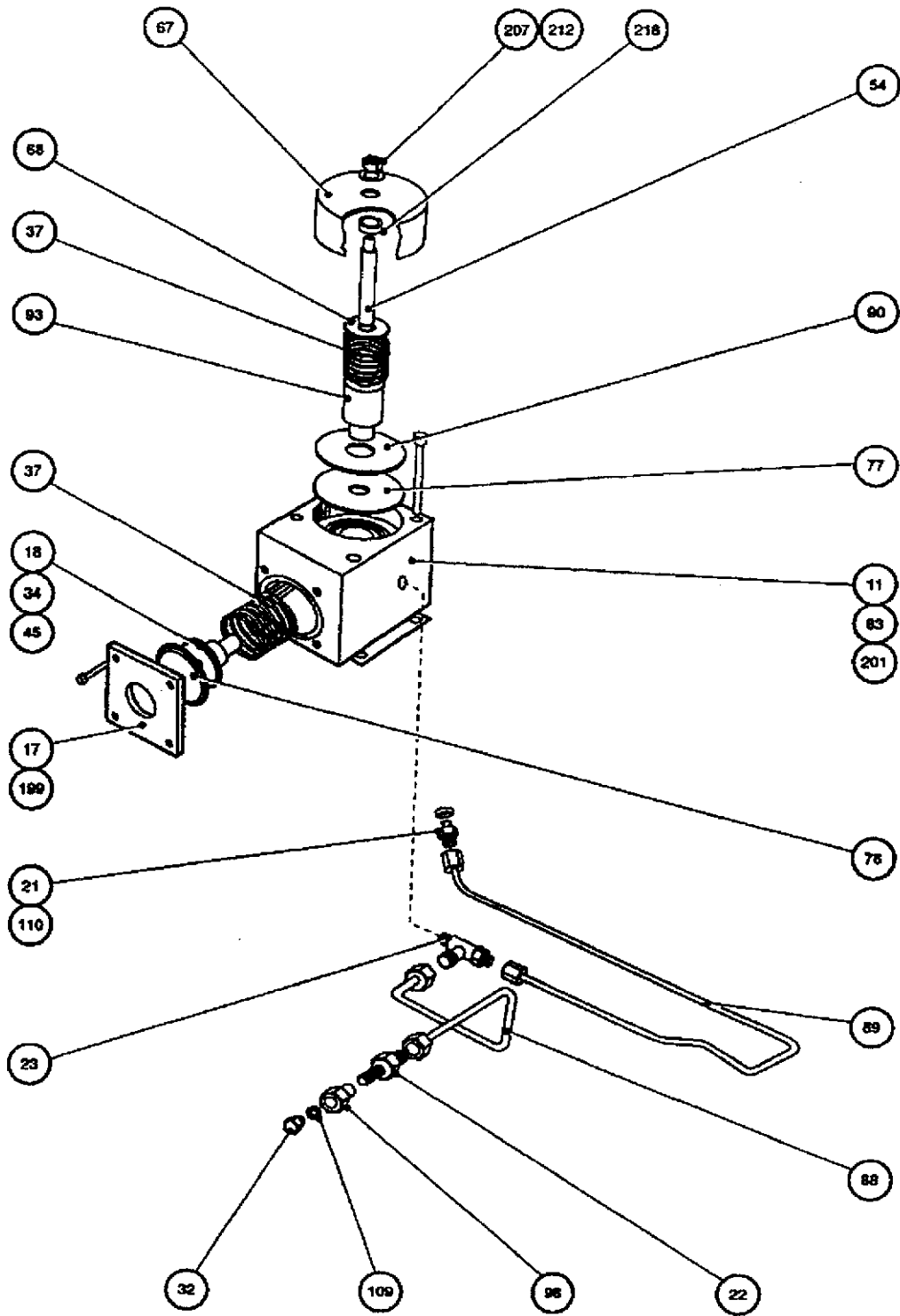


Figure 9 - (E) E2M175S/E2M275S Oil distributor sub-assembly

ITEM	DESCRIPTION	E1M 175S	E1M 275S	E2M 175S	E2M 275S	Item No	Kit No.
11	Distributor body	1	1	1	1	A34701038	
21	Wade male stud coupling	1	1	1	1	H03505041	
22	Wade female stud coupling	1	1	1	1	H03505056	
23	Wade stud run tee	1	1	1	1	H03505180	
32	1/8" BSP plug	1	1	1	1	A00714012	
37	Spring	1	1	1	1	A27102023	3,4,5,6
54	Stud	1	1	1	1	A22404007	
67	Distributor shroud	1	1	1	1	A25970025	
68	Distributor clamp washer	1	1	1	1	A25971012	
77	Distributor gasket	1	1	1	1		1, 2,3,4,5,6
83	Valve body gasket	1	1	1	1		1, 2,3,4,5,6
88	Tube	1	1	1	1	A27843018	
89	Tube	1	1	1	1	A27843019	
90	Distributor clamp plate	1	1	1	1	A27802007	
93	Distributor spring support	1	1	1	1	A27820009	
94	Connector 1/8" BSP	1	1	1	1	A27911002	
109	Dowty seal 1/8" BSP	1	1	1	1		1, 2,3,4,5,6
110	Dowty seal 1/4" BSP	1	1	1	1		1, 2,3,4,5,6
201	Skt hd cap screw, M6x35	4	4	4	4		
207	'oddie' nut M6 (m/s)	1	1	1	1		
212	'A' form washer, M6 (m/s cad)	1	1	1	1		
218	Hex nut, M6 (m/s cad)	1	1	1	1		

Table 9 - E1M175S/E1M275S Oil distributor sub-assembly - common items

ITEM	DESCRIPTION	E1M 175S	E1M 275S	E2M 175S	E2M 275S	Item No	Kit No
11	Distributor body	1	1	1	1	A34601038	
17	Clamp plate	1	1	1	1	A34601044	
18	Piston	1	1	1	1	A34601045	
21	Wade male stud coupling	1	1	1	1	H03505041	
22	Wade female stud coupling	1	1	1	1	H03505056	
23	Wade stud run tee	1	1	1	1	H03505180	
32	1/8" BSP plug	1	1	1	1	A00714012	
34	Piston face	1	1	1	1	A02800016	
37	Spring	2	2	2	2	A27102023	3,4,5,6
45	Oilite bush	1	1	1	1	A20407004	
54	Stud	1	1	1	1	A22404007	
67	Distributor shroud	1	1	1	1	A25970025	
68	Distributor clamp washer	1	1	1	1	A25971012	
77	Distributor gasket	1	1	1	1		1, 2,3,4,5,6
78	Diaphragm	1	1	1	1	A27159416	
83	Valve body gasket	1	1	1	1		1, 2,3,4,5,6
88	Tube	1	1	1	1	A27843018	
89	Tube	1	1	1	1	A27843019	
90	Distributor clamp plate	1	1	1	1	A27802007	
93	Distributor spring support	1	1	1	1	A27820009	
98	Connector 1/8" BSP	1	1	1	1	A27911002	
109	Dowty seal 1/8" BSP	1	1	1	1		1, 2,3,4,5,6
110	Dowty seal 1/4" BSP	1	1	1	1		1, 2,3,4,5,6
199	Skt hd cap screw, M6x16	4	4	4	4		
201	Skt hd cap screw, M6x55	4	4	4	4		
207	Nut, M6 (m/s)	1	1	1	1		
212	'A' form washer, M6 (m/s cad)	1	1	1	1		
218	Hex nut, M6 (m/s cad)	1	1	1	1		

Table 10 - E2M175S/E2M275S Oil distributor sub-assembly - common items

ITEM	DESCRIPTION	E1M	E1M	E2M	E2M	Item No.	Kit No
		175S	275S	175S	275S		
8	Rear bearing	1	1	1	1	A34601027	
9	Rear cover	1	1	1	1	A34601030	
10	Front bearing	1	1	1	1	A34601066	
16	Seal housing	1	1	1	1	A34601043	
39	Plug 1/4" BSP	1	1	1	1	A26002018	
46	Bearing	2	2	2	2		3,4,5,6
47	Shaft seal sleeve	1	1	1	1		3,4,5,6
62	Key	1	1	1	1	A24301009	
71	Washer	1	1	1	1	A25970027	
75	Retaining plate	1	1	1	1	A22308004	
95	Oil return tube assy.	1	1	1	1	A27879008	
110	Dowty seal 1/4" BSP	1	1	1	1		1,2,3,4,5,6
114	Oilseal - Viton	3	3	3	3		1,2,3,4,5,6
115	Backup washer	2	2	2	2		1,2,3,4,5,6
122	'O' ring	1	1	1	1		1,2,3,4,5,6
123	'O' ring	1	1	1	1		1,2,3,4,5,6
124	'O' ring	1	1	1	1		1,2,3,4,5,6
125	'O' ring	1	1	1	1		1,2,3,4,5,6
126	'O' ring	3	3	3	3		1,2,3,4,5,6
129	Petrol union nut 3/8" BSP	1	1	1	1	M03400008	
131	Spirol pin 5x14mm	1	1	1	1	212370631	
133	Spirol pin 6x16mm	1	1	1	1	212370657	
137	Blind tailpiece SC5	1	1	1	1	C11001062	
138	Bulkhead connector SC5	1	1	1	1	C11001080	
139	Adaptor SC5x1/8" BSP	1	1	1	1	C11001180	
183	Valve spacer	3	3	3	3	A27804004	
188	Ch hd screw, M5x10	4	4	4	4		
200	Skt hd cap screw, M6x25	1	1	1	1		
202	Skt hd cap screw, M8x25	5	5	5	5		
203	Skt hd cap screw, M6x20	7	7	7	7		
205	Skt hd cap screw, M10x30	12	12	12	12		
211	Shakeproof washer M5, (m/s cad)	4	4	4	4		
213	'A' form washer, M8 (m/s cad)	6	6	6	6		
222	Hex hd bolt, M8x45 (m/s cad)	6	6	6	6		
238	Oil pump blade	1	1	1	1		3,4,5,6

Table 11 - E1M175S/E1M275S HV stator sub-assembly common items

ITEM	DESCRIPTION	E1M	E1M	E2M	E2M	Item No	Kit No
		175S	275S	175S	275S		
9	Rear bearing	1	1	1	1	A36601027	
10	Front bearing	1	1	1	1	A34601066	
16	Seal housing	1	1	1	1	A34601043	
39	Plug 1/4" BSP	1	1	1	1	A26002018	
46	Bearing	2	2	2	2	A20404013	3,4,5,6
47	Shaft seal sleeve	1	1	1	1	A20405021	3,4,5,6
62	Key	1	1	1	1	A24301009	
71	Washer	1	1	1	1	A25970027	
75	Retaining plate	1	1	1	1	A22308004	
110	Dowty seal 1/4" BSP	2	2	2	2	H02104002	1,2,3,4,5,6
114	Oilseal-Viton	3	3	3	3	H02109077	1,2,3,4,5,6
115	Back-upwasher	2	2	2	2	A34601067	
122	'O' ring	1	1	1	1		1,2,3,4,5,6
123	'O' ring	1	1	1	1		1,2,3,4,5,6
124	'O' ring	1	1	1	1		1,2,3,4,5,6
125	'O' ring	1	1	1	1		1,2,3,4,5,6
131	Spirol pin 5x14mm	1	1	1	1	212370631	
133	Spirol pin 6x16mm	1	1	1	1	212370657	
183	Valve spacer	3	3	3	3	A27804004	
185	5mm dia x 20 s/s spring pin	1	1	1	1	212174134	
186	6mm dia.x 20 lg. Parallel hardened dowel	2	2	2	2	212181030	
188	Ch hd screw, M5x10 (m/s)	4	4	4	4		
192	Csk hd screw, M6x16 (m/s)	1	1	1	1		
199	Skt hd cap screw, M6x16	1	1	1	1		
200	Skt hd cap screw, M6x25	8	8	8	8		
205	Skt hd cap screw, M10x30	12	12	12	12		
207	NutM6 (m/s)	3	3	3	3		
211	Shakeproof washer, M5 (m/s cad)	4	4	4	4		
213	'A' form washer, M8 (m/s cad)	6	6	6	6		
222	Hex hd bolt, M8x45 (m/s cad)	6	6	6	6		
238	Oil pump blade	1	1	1	1	A20402539	3,4,5,6

ITEM	DESCRIPTION	E1M 175S	E1M 275S	E2M 175S	E2M 275S	Item No	Kit No
9	Rear bearing	1	1	1	1	A36601027	
10	Front bearing	1	1	1	1	A34601066	
16	Seal housing	1	1	1	1	A34601043	
39	Plug 1/4" BSP	1	1	1	1	A26002018	
46	Bearing	2	2	2	2	A20404013	3,4,5,6
47	Shaft seal sleeve	1	1	1	1	A20405021	3,4,5,6
62	Key	1	1	1	1	A24301009	
71	Washer	1	1	1	1	A25970027	
75	Retaining plate	1	1	1	1	A22308004	
110	Dowty seal 1/4" BSP	2	2	2	2	H02104002	1,2,3,4,5,6
114	Oilseal-Viton	3	3	3	3	H02109077	1,2,3,4,5,6
115	Back-upwasher	2	2	2	2	A34601067	
122	'O' ring	1	1	1	1		1,2,3,4,5,6
123	'O' ring	1	1	1	1		1,2,3,4,5,6
124	'O' ring	1	1	1	1		1,2,3,4,5,6
125	'O' ring	1	1	1	1		1,2,3,4,5,6
131	Spirol pin 5x14mm	1	1	1	1	212370631	
133	Spirol pin 6x16mm	1	1	1	1	212370657	
183	Valve spacer	3	3	3	3	A27804004	
185	5mm dia x 20 s/s spring pin	1	1	1	1	212174134	
186	6mm dia.x 20 lg. Parallel hardened dowel	2	2	2	2	212181030	
188	Ch hd screw, M5x10 (m/s)	4	4	4	4		
192	Csk hd screw, M6x16 (m/s)	1	1	1	1		
199	Skt hd cap screw, M6x16	1	1	1	1		
200	Skt hd cap screw, M6x25	8	8	8	8		
205	Skt hd cap screw, M10x30	12	12	12	12		
207	NutM6 (m/s)	3	3	3	3		
211	Shakeproof washer, M5 (m/s cad)	4	4	4	4		
213	'A' form washer, M8 (m/s cad)	6	6	6	6		
222	Hex hd bolt, M8x45 (m/s cad)	6	6	6	6		
238	Oil pump blade	1	1	1	1	A20402539	3,4,5,6

Table 12 - E2M175S/E2M275S Hv stator sub-assembly common items

TEM	DESCRIPTION	E1M 175S	E1M 275S	E2M 175S	E2M 275S	Item No	Kit No
150	HV rotor assy.	1		1		A26401057	
158	HV stator	1	1		1	A26401058	
			1			A34601026	
				1		A34701026	
					1	A36601026	
159	Valve box	1				A36701026	
			1			A34601047	
				1		A34701047	
					1	A36601047	
176	Exhaust baffle	1		1		A36701047	
			1		1	A25946002	
177	Clamp plate	1				A25946003	
			1			A25647003	
				1		A25947004	
					1	A25947002	
178	Exhaust valve plate	1				A25947001	
			1			A25976011	
				1		A25976012	
					1	A25976004	
180	Exhaust valve rubber	1				A25976003	1, 2,3
			1				1, 2,4
				1		A27159505	5,6
239	HV blade	2		2	1	A27159506	6
					2	A20402632	3,5
			2			A20402634	4,6

Table 13 - HV stator sub-assembly specific items parts list

(G) Motor drive sub-assembly

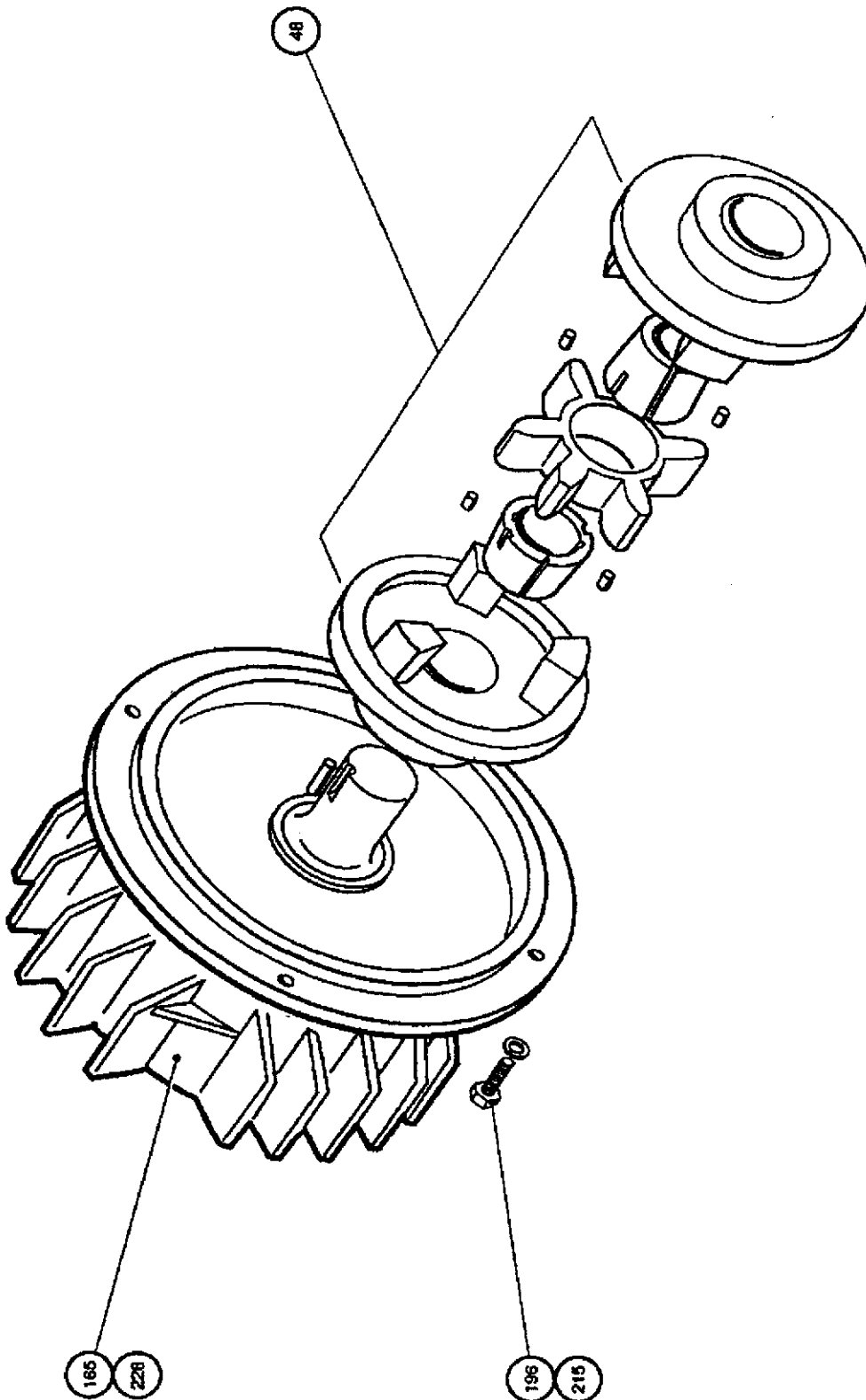


Figure 11 - (G) Motor drive sub-assembly

ITEM	DESCRIPTION	E1M 175S	E1M 275S	E2M 175S	E2M 275S	Item No	Kit No
48	Flexible coupling	1	1	1	1	A21071025	
196	Hex hd screw, M12x40 (m/s)	4	4	4	4		
215	'A' form washer, M12 (m/s cad)	4	4	4	4		
228	Warning label electrical	1	1	1	1	E20001063	

Table 14 - Motor drive sub-assembly common items

ITEM	DESCRIPTION	E1M 175S	E1M 275S	E2M 175S	E2M 275S	Item No	Kit No
165	Motor - see 'Item No.' Table 7	1	1	1	1		

Table 15 - Motor drive sub-assembly specific items

(H) LV stator sub-assembly

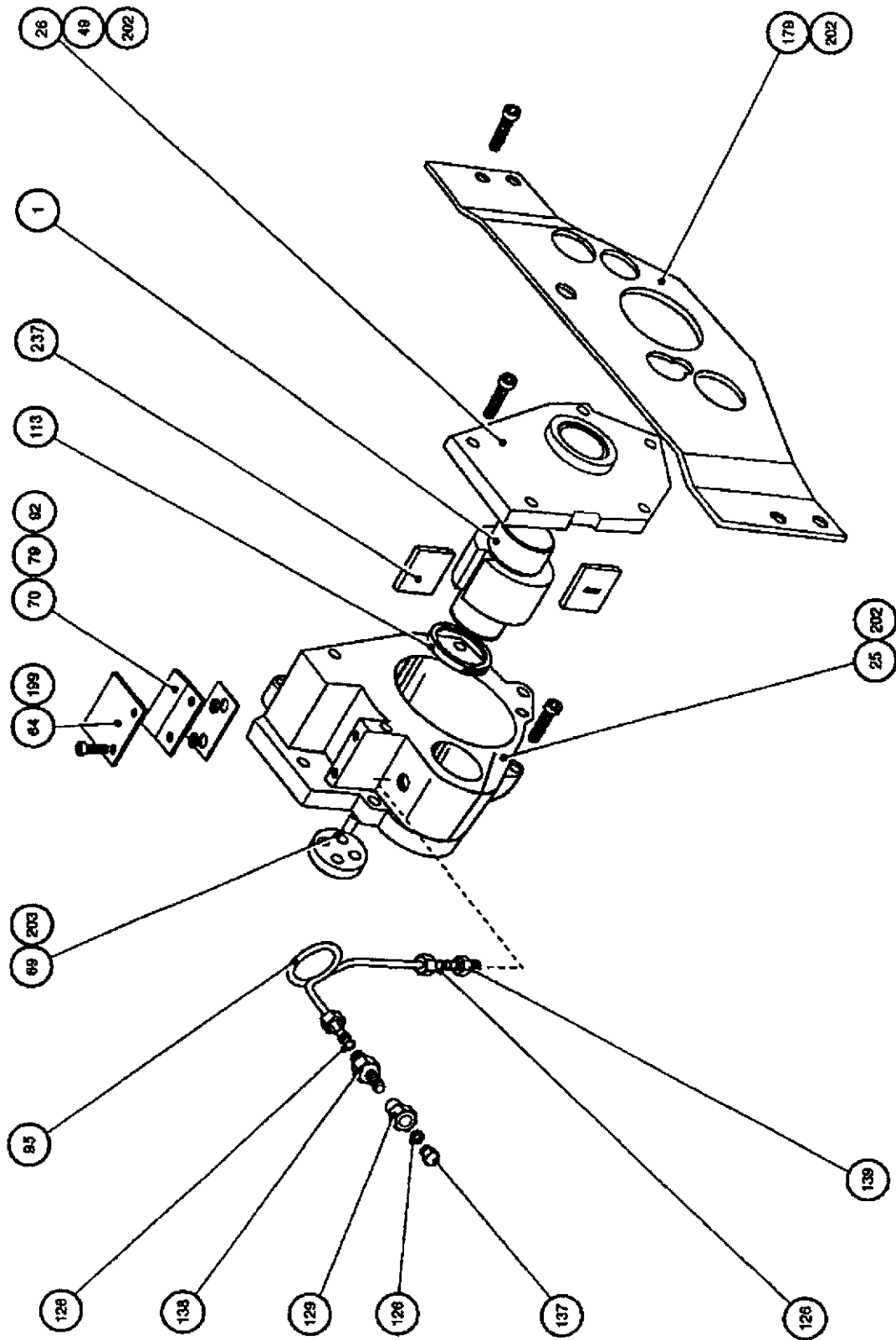


Figure 12 - (H) E2M175S/E2M275S LV stator sub-assembly

ITEM	DESCRIPTION	E1M 175S	E1M 275S	E2M 175S	E2M 275S	Item No	Kit No
1	LV Rotor assy	1	1	1	1	A26401050	
25	LV stator	1	1	1	1	A36601028	
26	Rear cover	1	1	1	1	A36601030	
49	Core plug - 38mm dia.	1	1	1	1	A21078002	
64	LV exh. baffle	1	1	1	1	A25946004	
69	Drive plate	1	1	1	1	A25972004	5,6
70	LV exh. valve plate	1	1	1	1	A25976002	5,6
79	LV exh. valve rubber	1	1	1	1	A27159504	
92	Outlet valve spacer	2	2	2	2	A27804004	
95	Oil return tube assy.	1	1	1	1	A27879006	
113	Oil seal - Viton	1	1	1	1	H02109076	5,6
126	'O' ring	3	3	3	3		3,4,5,6
129	Petrol union nut 3/8" BSP	1	1	1	1	M03400008	
137	Blind tailpiece SC5	1	1	1	1	C11001062	
138	Bulkhead connector SC5	1	1	1	1	C11001080	
139	Adaptor SC5 x 1/8" BSP	1	1	1	1	C11001180	
179	Support plate		1		1	A25970030	
199	Skt hd cap screw, M6x16	2	2	2	2		
202	Skt hd cap screw, M8x30	10	10	10	10		
203	Drive pin	4	4	4	4	A22425003	
237	LV blade	2	2	2	2	A20402636	5,6

Table 16 - E2M175S/E2M275S LV stator sub-assembly - common items

E2M175AE AND E2M275AE SPECIAL ITEMS

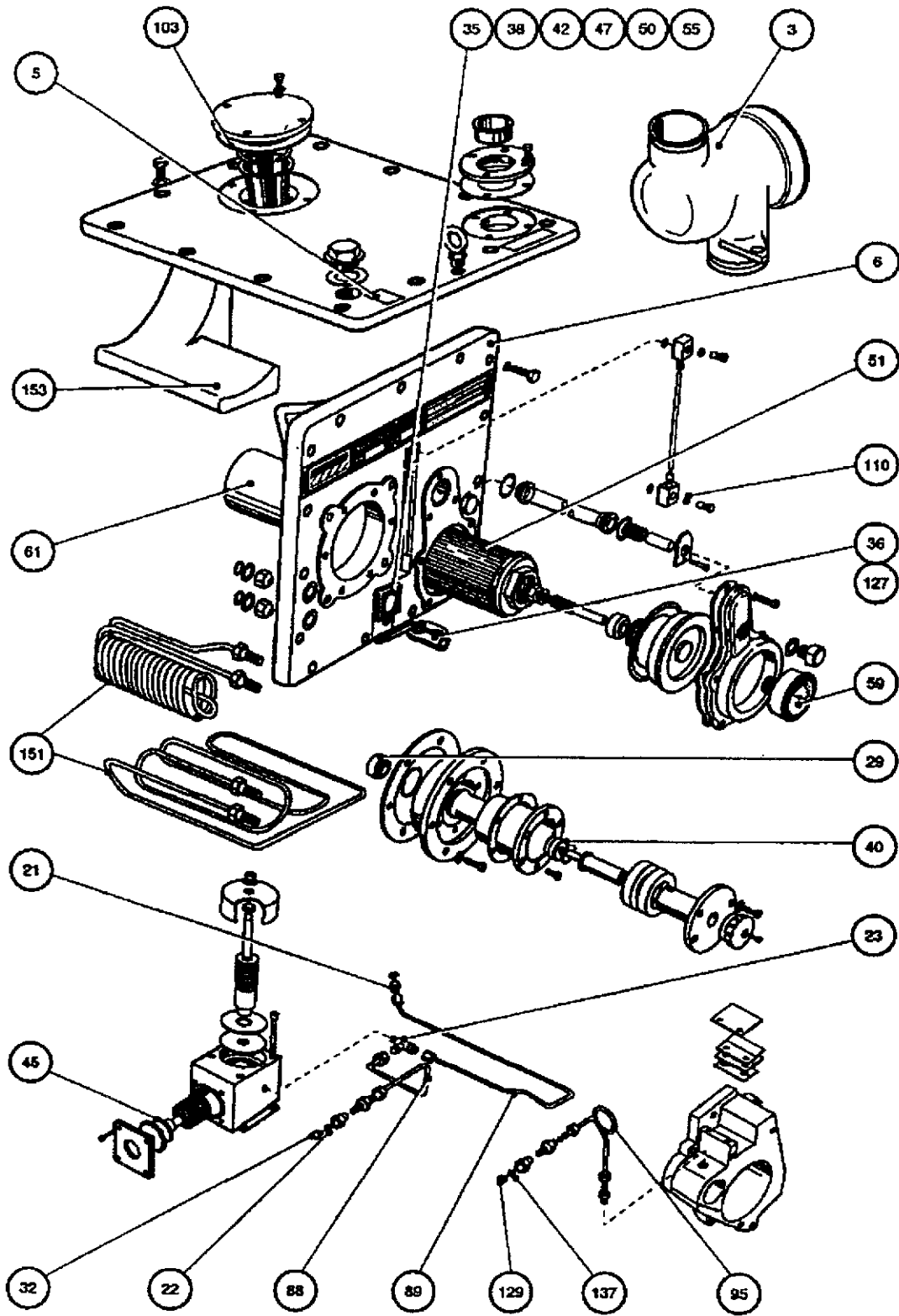


Figure 13 - E2M175AE and E2M275AE special items

ITEM	DESCRIPTION	E2M 175AE	E2M 275AE	Item No	Kit No
3	Inlet valve assy.	1	1	A44002000	
5	Label (FOMBLIN OIL ONLY)	1	1	A20001082	
6	End plate	1	1	A36615001	
21	Male conn. 1/4" BSPT	1	1	H03527000	
22	Fem. conn. 1/8" BSPT	1	1	H03527001	
23	Male run tee 1/4" BSPT	1	1	H03527002	
29	Ballast plug	1	1	A36621004	
32	1/8" BSP plug	1	1	A26002010	
35	Sight glass bezel	1	1	A25908100	
36	Ball valve	1	1	A28702007	
*38	'O'-ring	2	2	H02125028	
40	Ballast piston assy.	1	1	A36621001	
42	Compression ring	1	1	A27820008	
45	Bush	1	1	A20407007	
47	Sight glass reflector	1	1	A25976001	
*50	Sight glass	1	1	A29201004	
*51	Filter element	1	1	A22305043	
55	M5x10 pan hd sl s/s scr.	4	4	218221328	
59	Vacuum gauge	1	1	A22906003	
61	Cover (filter)	1	1	A36615003	
88	Tube	1	1	A27840038	
95	Oil return tube assy.	1	1	A27876002	
*103	63mm Co-seal - Viton	1	1		1, 2
110	Dowty seal 1/4" BSP	4	4		1, 2
127	Hex. nipple 1/2" BSP male	1	1	H03503023	
129	3/8" BSP nut	1	1	A25202002	
137	Blind tailpiece	1	1	C11001064	

Table 17 - E2M175AE and E2M275AE - common items

*Note: You must use a E2M175S or E2M275S Maintenance Kit when servicing E2M175AE or E2M275AE pumps. You must use additional items marked * 'in Table 17.*

ITEM	DESCRIPTION	E2M 175AE	E2M 275AE	E2M275AE CODE No.	Kit No
89	Tube	1		A27840037	
151	Cooling coil assy.	1	1	A27840009	
153	Ballast casting	1	1	A34621002	
				A36721002	
				A21035082	
				A21035083	

Table 18 - E2M175AE and E2M275AE - specific items